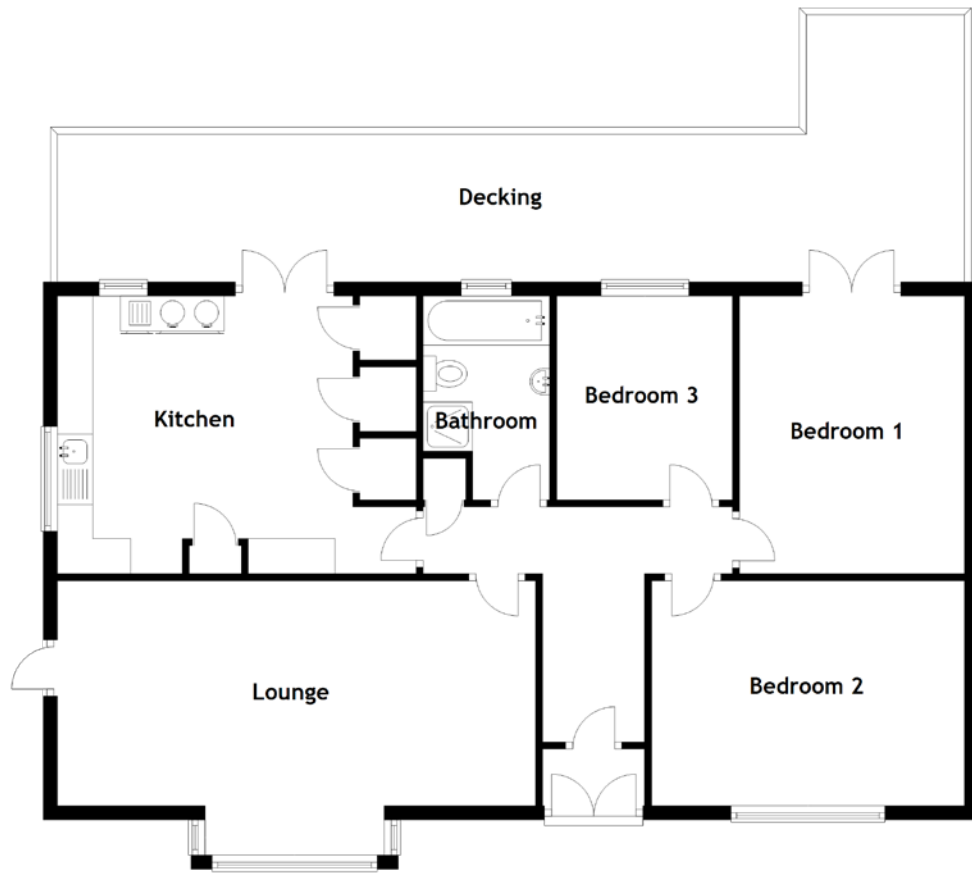


FLOOR PLAN, DIMENSIONS & MAP



Approximate Dimensions (Taken from the widest point)

| | |
|-----------|-------------------------------|
| Lounge | 6.80m (22'4") x 3.20m (10'6") |
| Kitchen | 5.10m (16'9") x 3.95m (13') |
| Bedroom 1 | 3.95m (13') x 3.20m (10'6") |
| Bedroom 2 | 4.45m (14'7") x 3.20m (10'6") |

| | |
|-----------|-------------------------------|
| Bedroom 3 | 2.90m (9'6") x 2.50m (8'2") |
| Bathroom | 2.90m (9'6") x 1.80m (5'11") |
| Decking | 12.90m (42'4") x 2.20m (7'3") |

Gross internal floor area (m²): 94m²
EPC Rating: F

