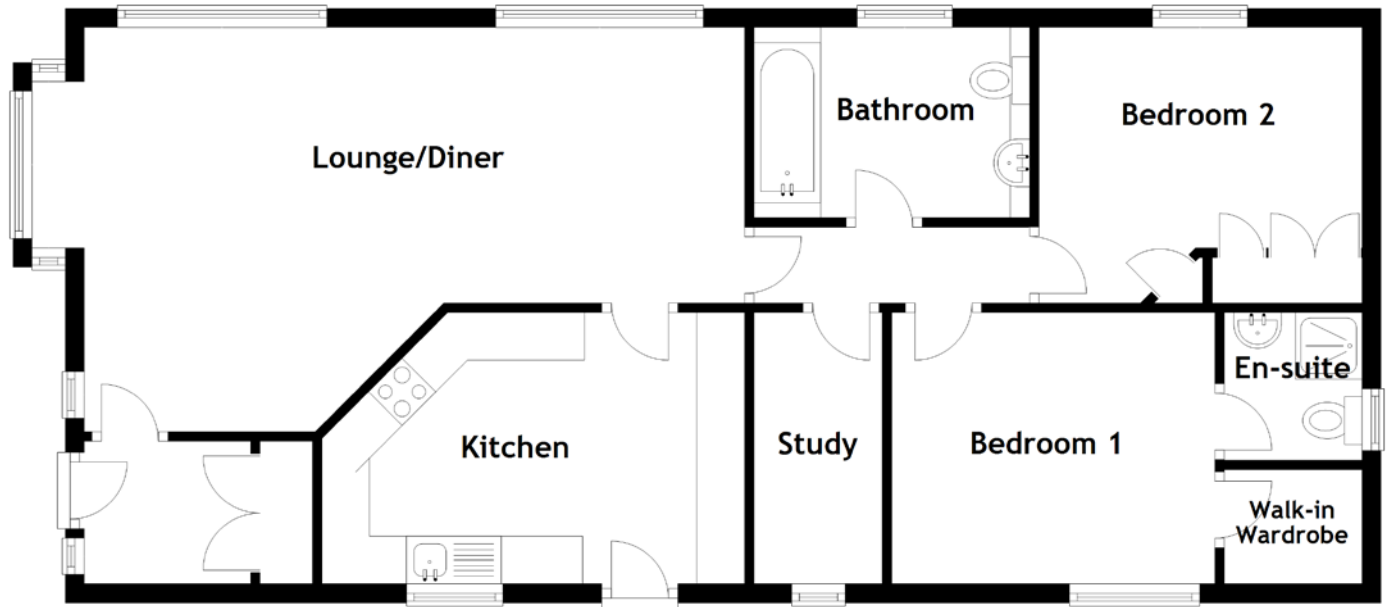


FLOOR PLAN, DIMENSIONS & MAP



Approximate Dimensions
(Taken from the widest point)

Lounge/Diner 6.95m (22'10") x 4.25m (13'11")
Kitchen 3.50m (11'6") x 2.85m (9'4")
Bedroom 1 3.40m (11'2") x 2.85m (9'4")
En-suite 1.85m (6'1") x 1.55m (5'1")

Walk-in Wardrobe 1.85m (6'1") x 1.25m (4'1")
Bedroom 2 3.40m (11'2") x 2.90m (9'6")
Study 2.85m (9'4") x 1.35m (4'5")
Bathroom 2.90m (9'6") x 2.00m (6'7")

Gross internal floor area (m²): N/A
EPC Rating: N/A

