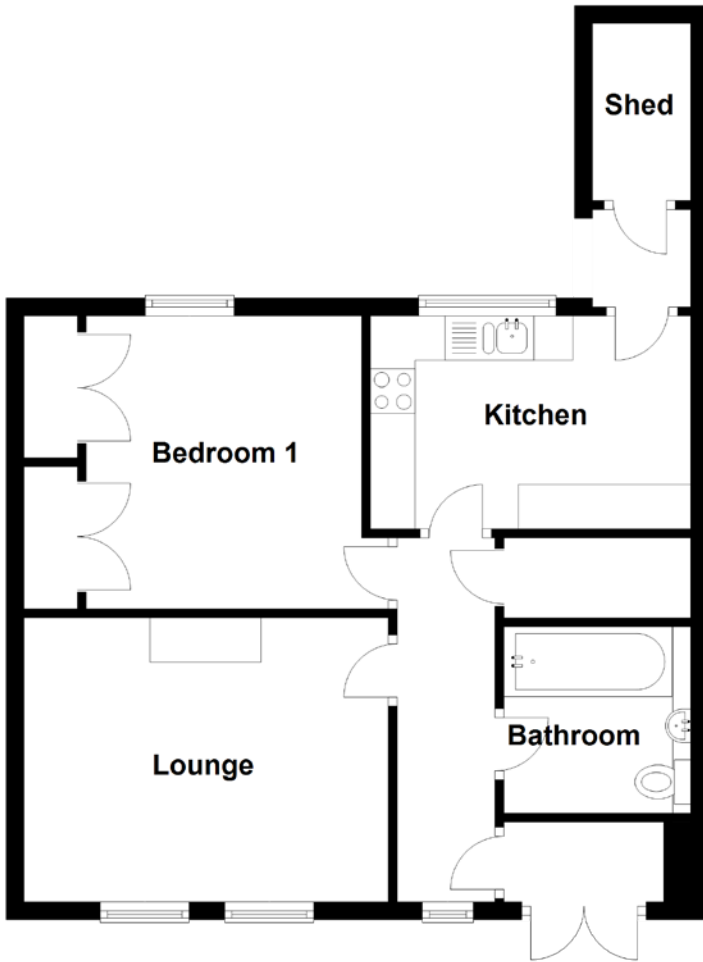


FLOOR PLAN, DIMENSIONS & MAP



Approximate Dimensions
(Taken from the widest point)

Lounge	4.10m (13'5") x 3.20m (10'6")
Bathroom	2.10m (6'11") x 2.10m (6'11")
Kitchen	3.60m (11'10") x 2.40m (7'10")
Bedroom	3.40m (11'2") x 3.30m (10'10")

Gross internal floor area (m²): 50m²

EPC Rating: D

