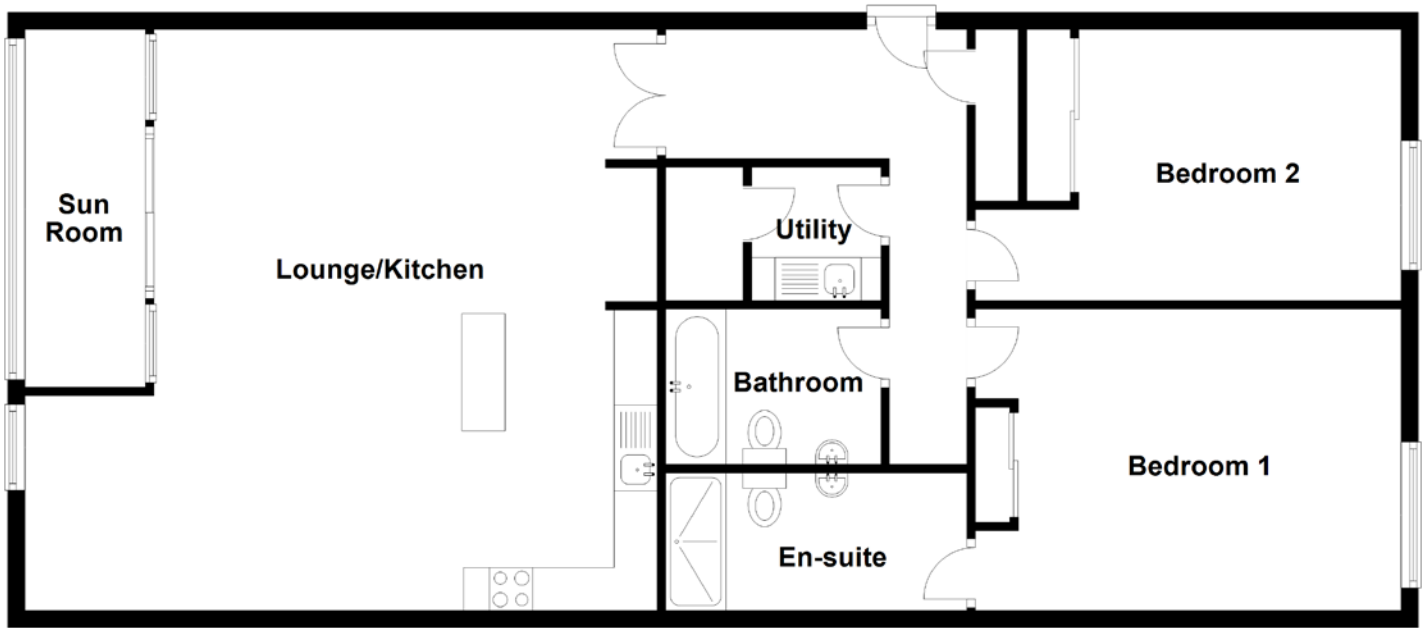


FLOOR PLAN, DIMENSIONS & MAP



Approximate Dimensions (Taken from the widest point)

Lounge/Kitchen	7.35m (24'1") x 6.75m (22'2")
Sun Room	4.25m (13'11") x 1.40m (4'7")
Utility	1.55m (5'1") x 1.50m (4'11")
Bedroom 1	4.95m (16'3") x 3.50m (11'6")

En-suite	3.50m (11'6") x 1.60m (5'3")
Bedroom 2	4.95m (16'3") x 3.15m (10'4")
Bathroom	2.50m (8'2") x 1.80m (5'11")

Gross internal floor area (m²): 109m²
EPC Rating: B

