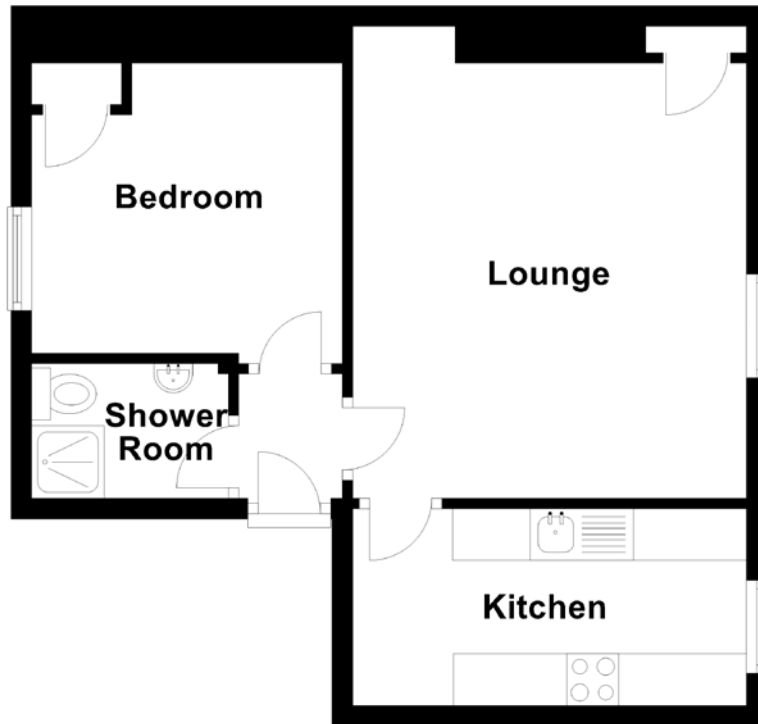


FLOOR PLAN, DIMENSIONS & MAP



Approximate Dimensions
(Taken from the widest point)

Lounge 4.20m (13'9") x 3.80m (12'6")
Kitchen 3.80m (12'6") x 1.90m (6'3")

Bedroom 3.00m (9'10") x 3.00m (9'10")
Shower Room 1.90m (6'3") x 1.30m (4'3")

Gross internal floor area (m²): 37m²
EPC Rating: F

