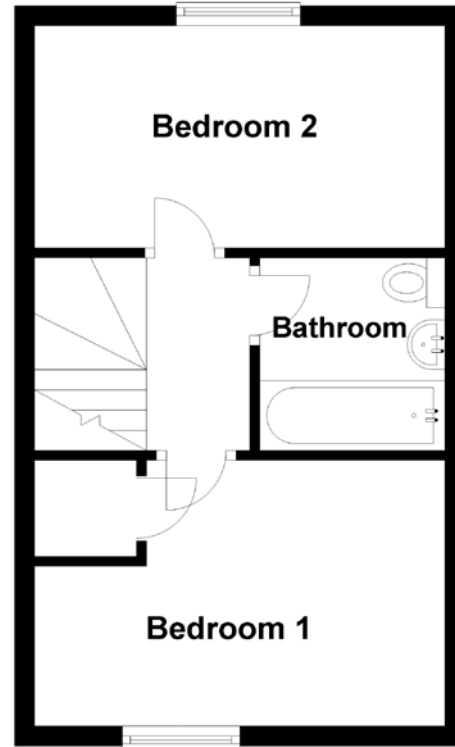
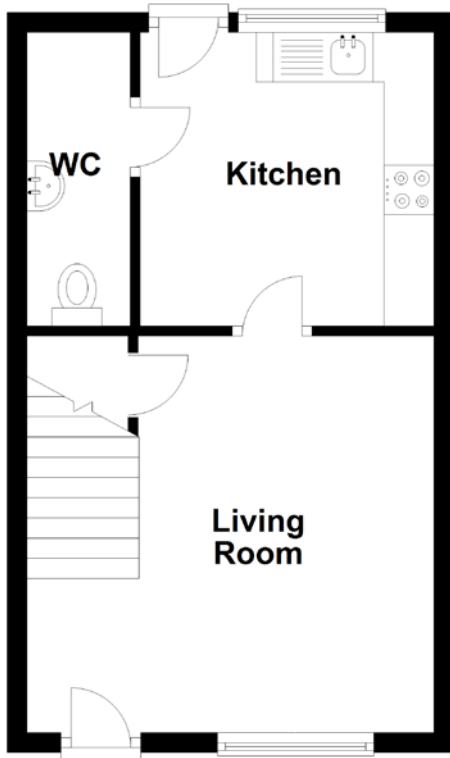


FLOOR PLAN, DIMENSIONS & MAP



Approximate Dimensions
(Taken from the widest point)

Living Room 4.09m (13'5") x 3.98m (13'1")
Kitchen 2.95m (9'8") x 2.95m (9'8")
WC 2.95m (9'8") x 1.04m (3'5")

Bedroom 1 4.12m (13'6") x 2.52m (8'3")
Bedroom 2 4.12m (13'6") x 2.23m (7'4")
Bathroom 1.93m (6'4") x 1.86m (6'1")

Gross internal floor area (m²): 57m²
EPC Rating: C

