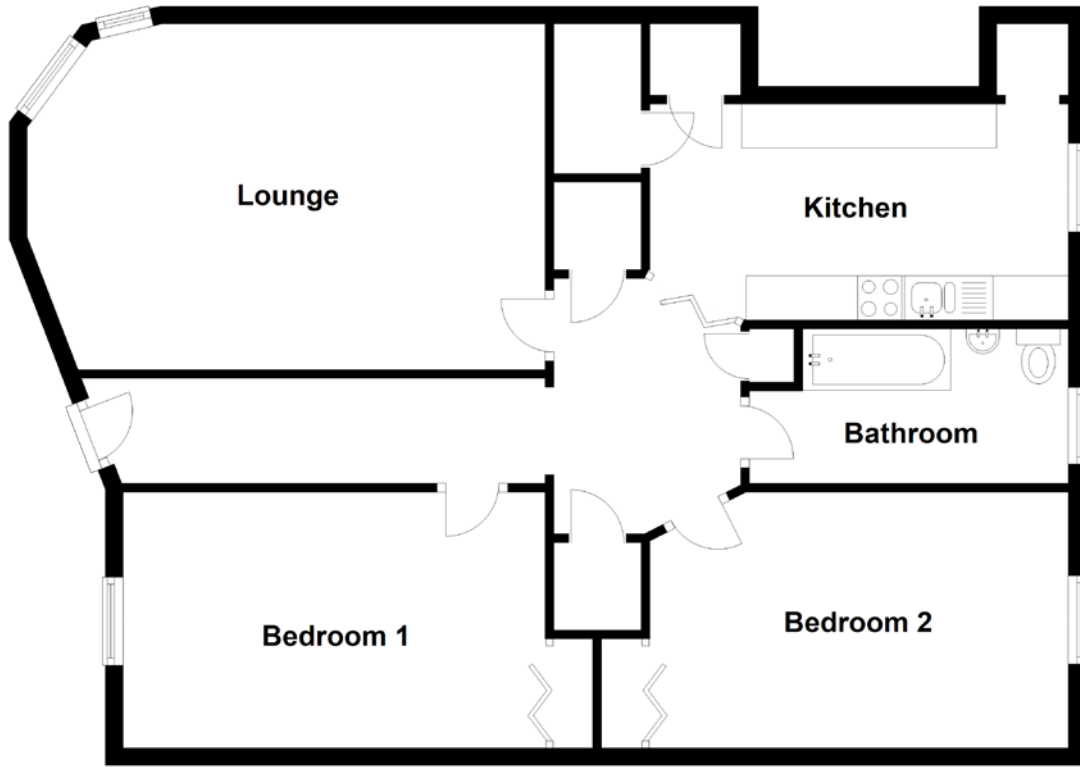


FLOOR PLAN, DIMENSIONS & MAP



Approximate Dimensions (Taken from the widest point)

Lounge 5.88m (19'3") x 3.92m (12'10")
Kitchen 4.28m (14'1") x 2.45m (8')
Bedroom 1 4.79m (15'9") x 2.90m (9'6")

Bedroom 2 4.75m (15'7") x 2.96m (9'9")
Bathroom 3.62m (11'11") x 1.75m (5'9")

Gross internal floor area (m²): 91m²
EPC Rating: D

