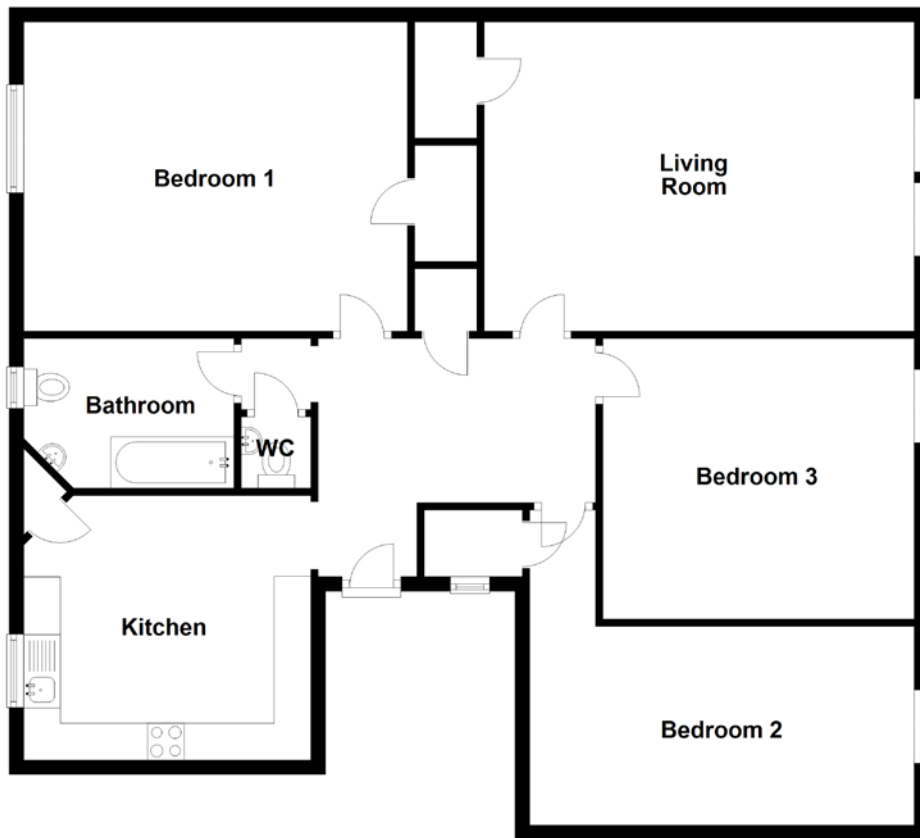


FLOOR PLAN, DIMENSIONS & MAP



Approximate Dimensions (Taken from the widest point)

Living Room	5.87m (19'3") x 4.22m (13'10")
Kitchen	3.87m (12'8") x 3.61m (11'10")
Bedroom 1	5.24m (17'2") x 4.13m (13'7")
Bedroom 2	5.25m (17'3") x 4.30m (14'1")

Bedroom 3	4.25m (13'11") x 3.83m (12'7")
Bathroom	2.87m (9'5") x 2.04m (6'8")
WC	0.97m (3'2") x 0.95m (3'1")

Gross internal floor area (m²): 118m²
EPC Rating: D

