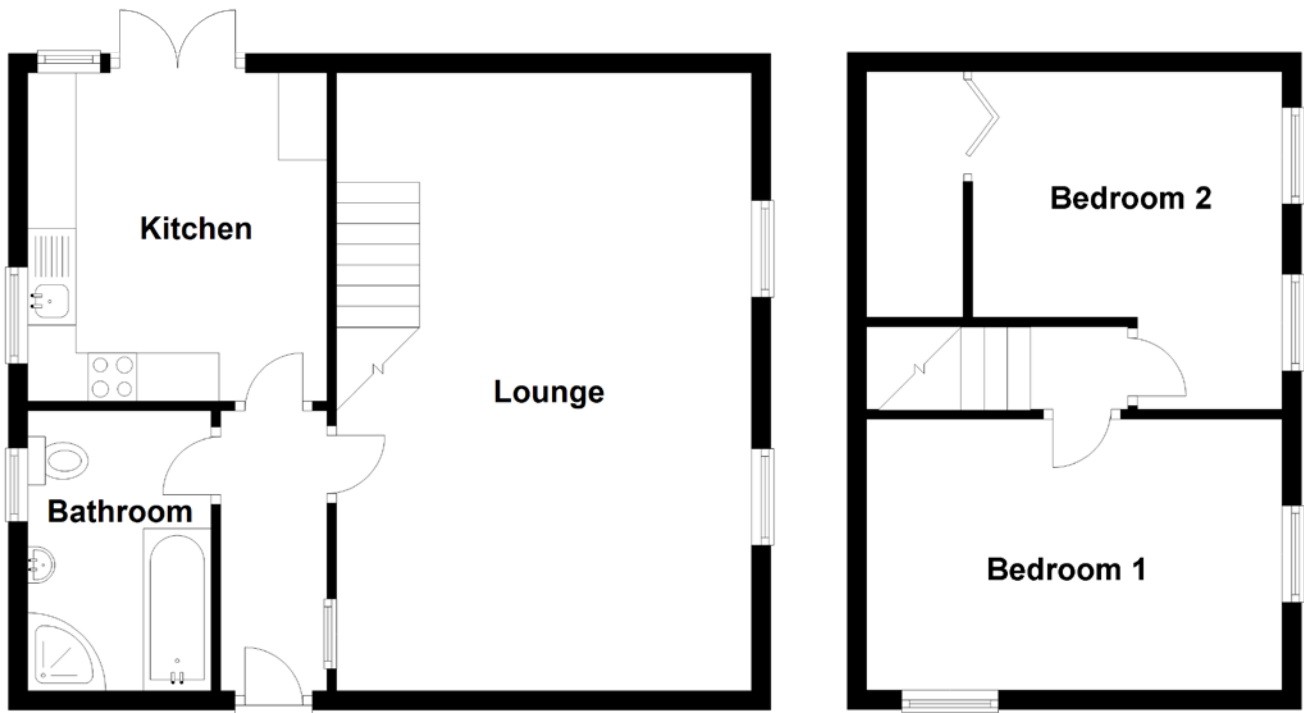


FLOOR PLAN, DIMENSIONS & MAP



Approximate Dimensions (Taken from the widest point)

Lounge	6.40m (21') x 4.30m (14'1")
Kitchen	3.60m (11'10") x 3.20m (10'6")
Bedroom 1	4.30m (14'1") x 2.40m (7'10")
Bedroom 2	3.50m (11'6") x 3.20m (10'6")
Bathroom	2.90m (9'6") x 1.90m (6'3")

Gross internal floor area (m²): 75m²
EPC Rating: E

Extras (Included in the sale): Floor coverings, light fittings, window dressings and all white goods.

