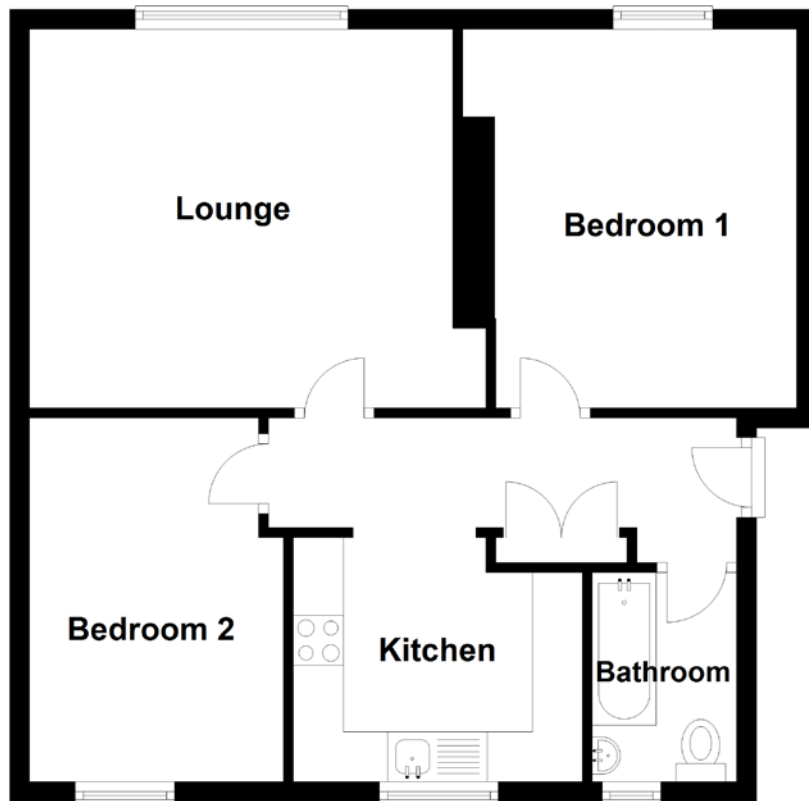


FLOOR PLAN, DIMENSIONS & MAP



Approximate Dimensions (Taken from the widest point)

Lounge	4.25m (13'11") x 3.80m (12'6")
Kitchen	2.90m (9'6") x 2.45m (8')
Bedroom 1	3.80m (12'6") x 3.35m (11')
Bedroom 2	3.65m (12') x 2.55m (8'4")
Bathroom	2.15m (7'1") x 1.45m (4'9")

Gross internal floor area (m²): 54m²
EPC Rating: C

Extras (Included in the sale): Carpets and floor coverings, light fixtures and fittings, curtains and blinds.

