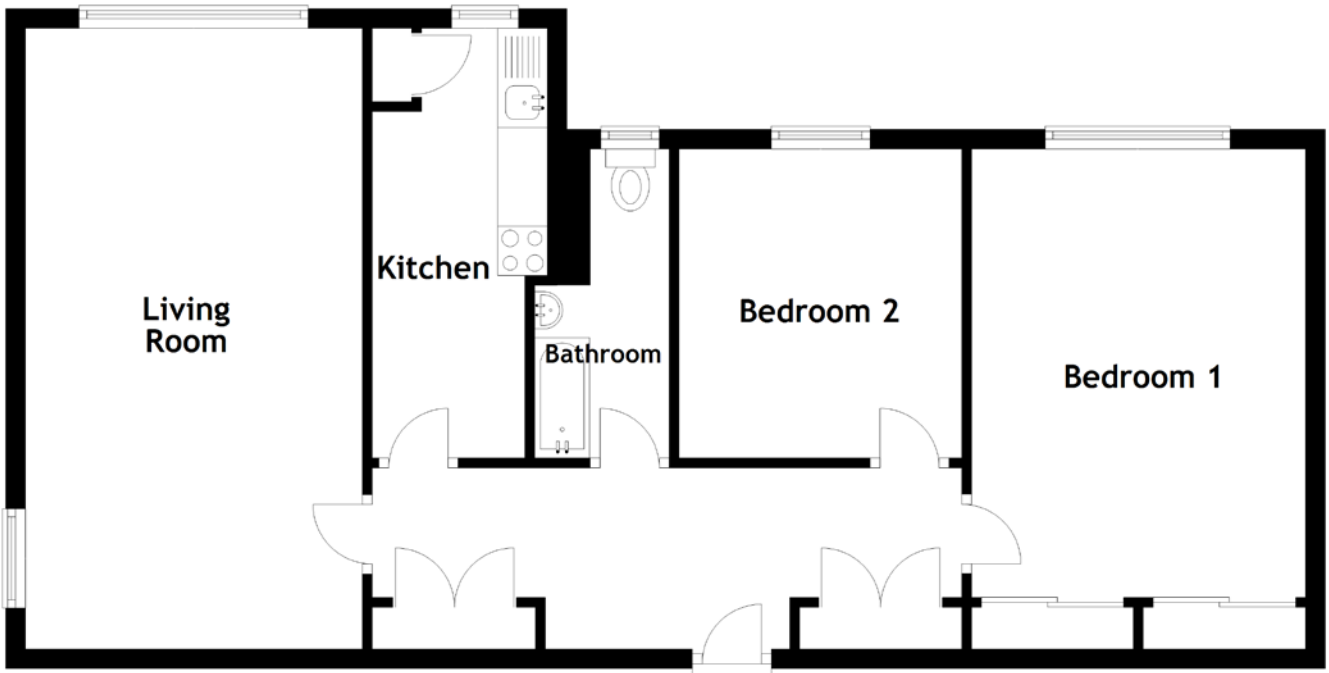


# FLOOR PLAN, DIMENSIONS & MAP



Approximate Dimensions (Taken from the widest point)

Living Room 6.27m (20'7") x 3.41m (11'2")  
 Kitchen 4.34m (14'3") x 1.77m (5'10")  
 Bedroom 1 4.53m (14'10") x 3.38m (11'1")

Bedroom 2 3.12m (10'3") x 2.86m (9'5")  
 Bathroom 3.12m (10'3") x 1.36m (4'6")

Gross internal floor area (m<sup>2</sup>): 76m<sup>2</sup>  
 EPC Rating: D

