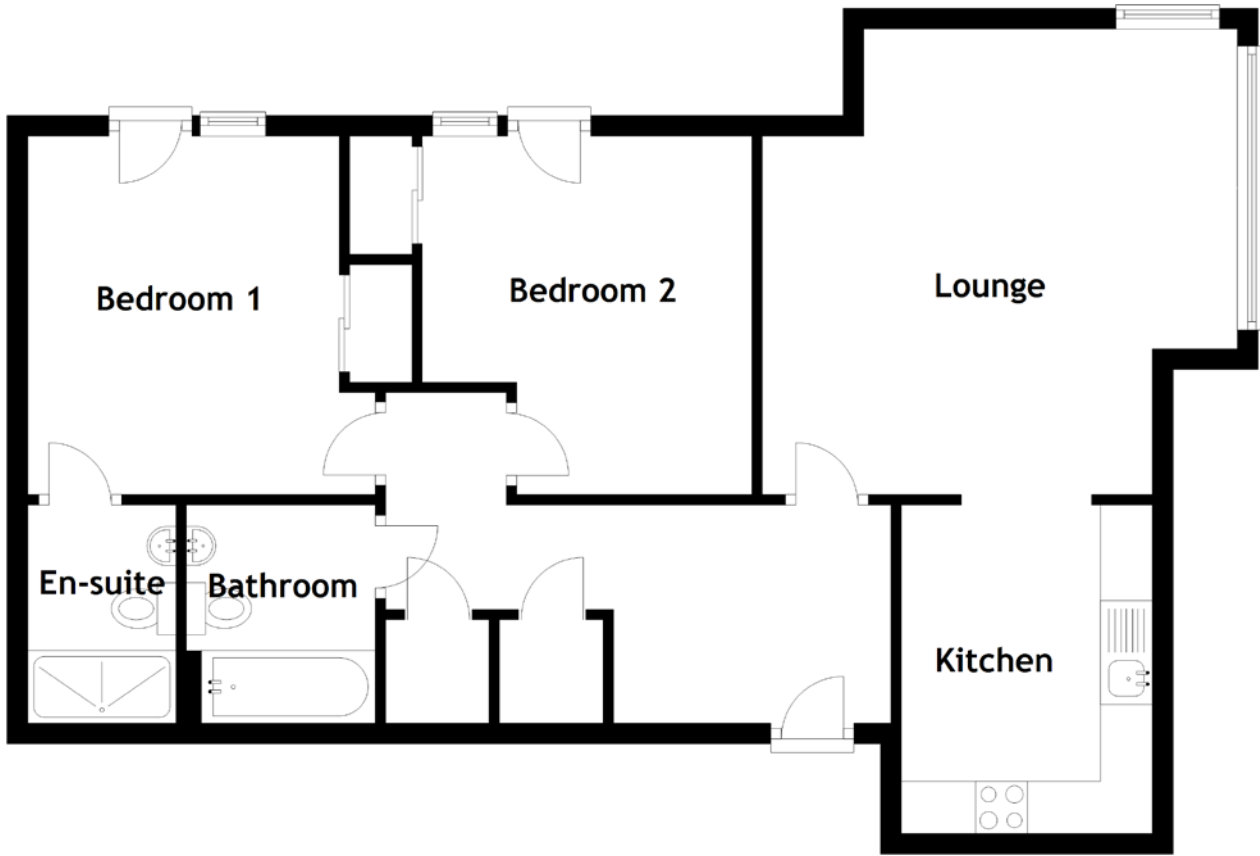


# FLOOR PLAN, DIMENSIONS & MAP



Approximate Dimensions  
(Taken from the widest point)

Lounge 4.58m (15') x 4.48m (14'8")  
 Kitchen 3.16m (10'4") x 2.42m (7'11")  
 Bathroom 2.10m (6'11") x 1.82m (6')

Bedroom 1 3.45m (11'4") x 3.26m (10'8")  
 En-suite 2.10m (6'11") x 1.43m (4'8")  
 Bedroom 2 3.46m (11'4") x 3.14m (10'4")

Gross internal floor area (m<sup>2</sup>): 70m<sup>2</sup>  
 EPC Rating: B

