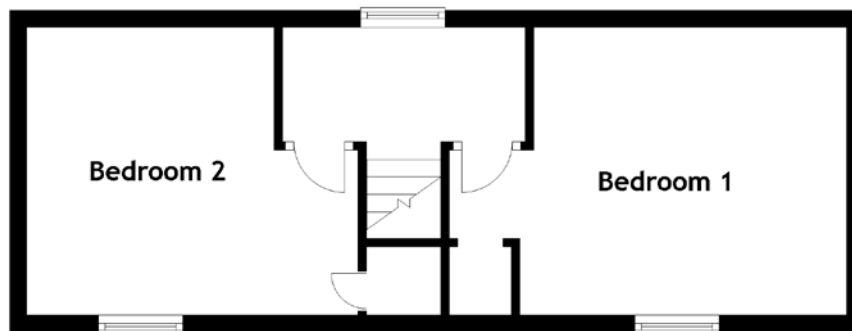
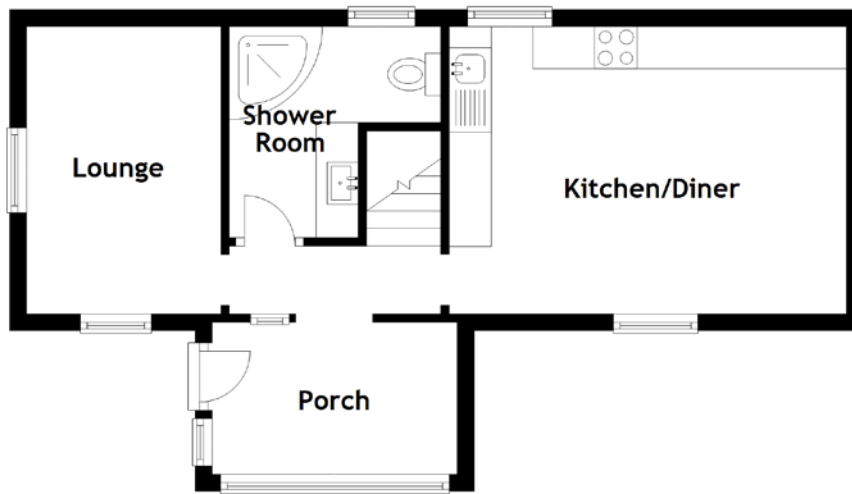


FLOOR PLAN, DIMENSIONS & MAP



Approximate Dimensions (Taken from the widest point)

Porch	2.90m (9'6") x 1.80m (5'11")
Lounge	3.40m (11'2") x 2.30m (7'7")
Kitchen/Diner	4.70m (15'5") x 3.50m (11'6")
Shower Room	2.50m (8'2") x 2.50m (8'2")
Bedroom 1	5.00m (16'5") x 3.50m (11'6")
Bedroom 2	4.10m (13'5") x 3.50m (11'6")

Gross internal floor area (m²): 76m²

EPC Rating: F

Extras (Included in the sale): All fitted floor coverings, light fittings and curtains.

