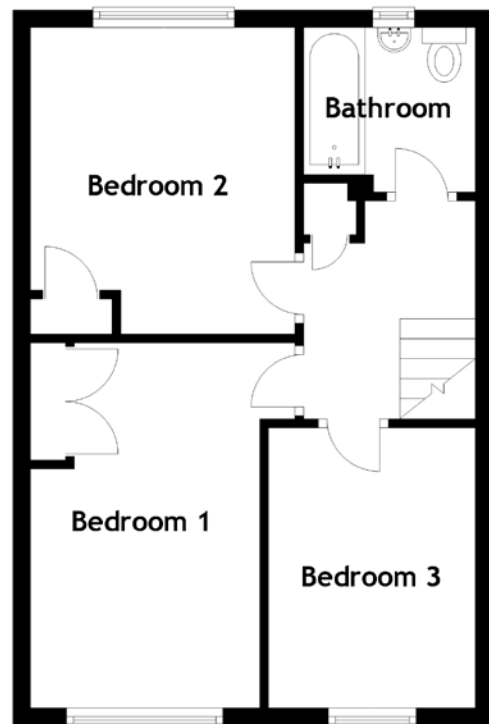
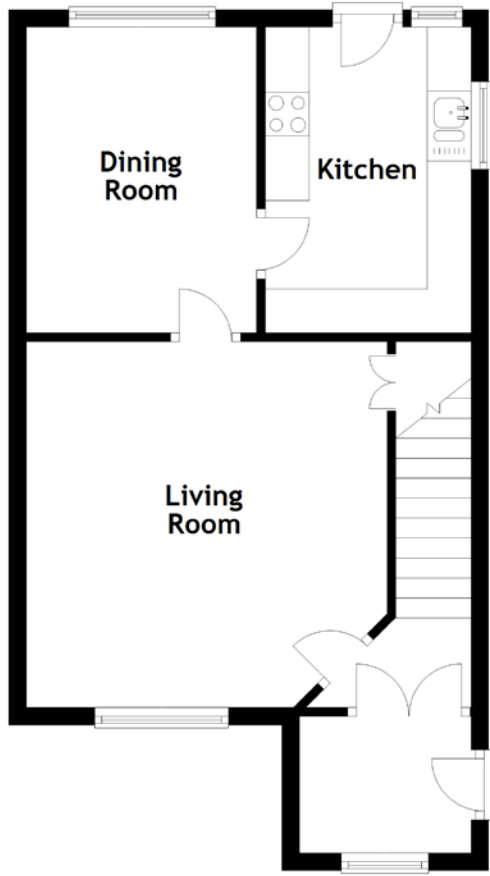


FLOOR PLAN, DIMENSIONS & MAP



Approximate Dimensions (Taken from the widest point)

Living Room	4.18m (13'9") x 4.12m (13'6")
Dining Room	3.49m (11'5") x 2.63m (8'8")
Kitchen	3.49m (11'5") x 2.35m (7'9")
Bedroom 1	4.17m (13'8") x 3.08m (10'1")

Bedroom 2	3.50m (11'6") x 3.08m (10'1")
Bedroom 3	3.20m (10'6") x 2.36m (7'9")
Bathroom	1.89m (6'2") x 1.88m (6'2")

Gross internal floor area (m²): 81m²
EPC Rating: C

