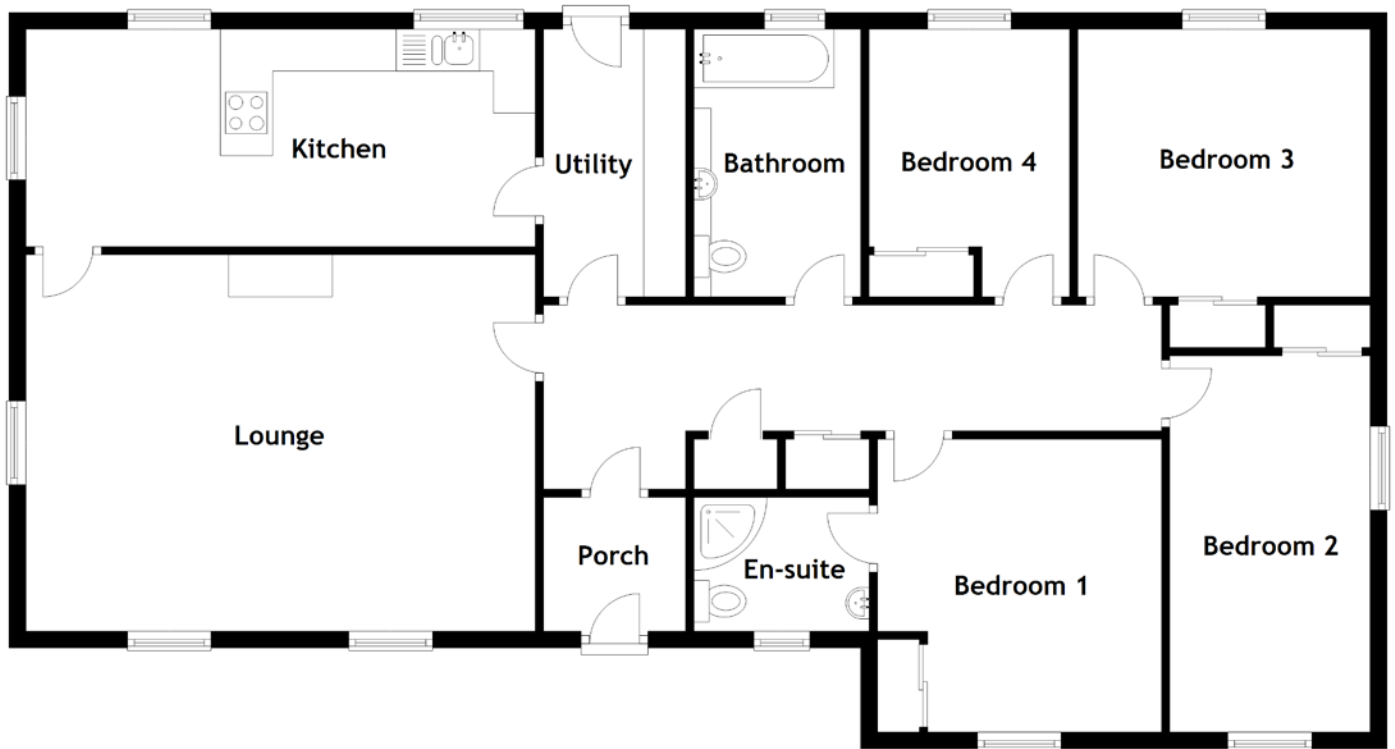


FLOOR PLAN, DIMENSIONS & MAP



Approximate Dimensions
(Taken from the widest point)

Porch	1.70m (5'7") x 1.60m (5'3")
Lounge	6.10m (20') x 4.50m (14'9")
Kitchen	6.10m (20') x 2.60m (8'6")
Utility	3.20m (10'6") x 1.70m (5'7")
Bathroom	3.20m (10'6") x 2.00m (6'7")

Bedroom 1	3.50m (11'6") x 3.40m (11'2")
En-suite	2.10m (6'11") x 1.50m (4'11")
Bedroom 2	4.50m (14'9") x 2.50m (8'2")
Bedroom 3	3.50m (11'6") x 3.20m (10'6")
Bedroom 4	3.20m (10'6") x 2.40m (7'10")

Gross internal floor area (m²): 124m²
EPC Rating: D

