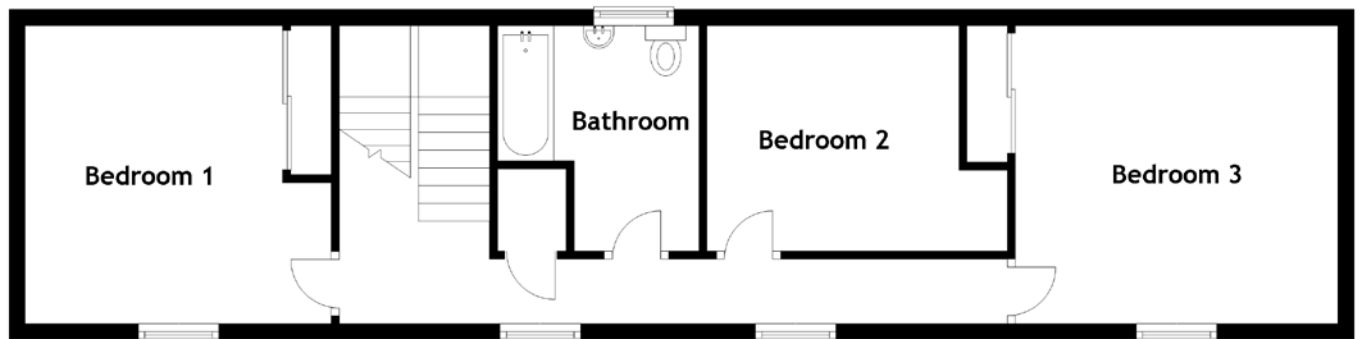
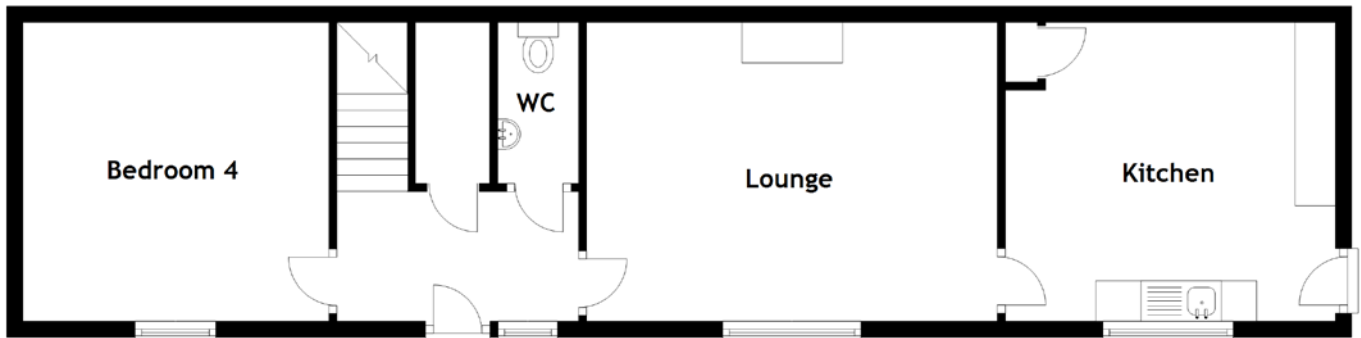


# FLOOR PLAN, DIMENSIONS & MAP



Approximate Dimensions  
(Taken from the widest point)

Lounge	5.10m (16'9") x 3.70m (12'2")
Kitchen	4.10m (13'5") x 3.70m (12'2")
Bedroom 4	3.80m (12'6") x 3.70m (12'2")
WC	2.00m (6'7") x 1.00m (3'3")

Bathroom	2.90m (9'6") x 2.50m (8'2")
Bedroom 1	3.90m (12'10") x 3.70m (12'2")
Bedroom 2	3.80m (12'6") x 2.90m (9'6")
Bedroom 3	4.00m (13'2") x 3.70m (12'2")

Gross internal floor area (m<sup>2</sup>): 128m<sup>2</sup>  
EPC Rating: E

