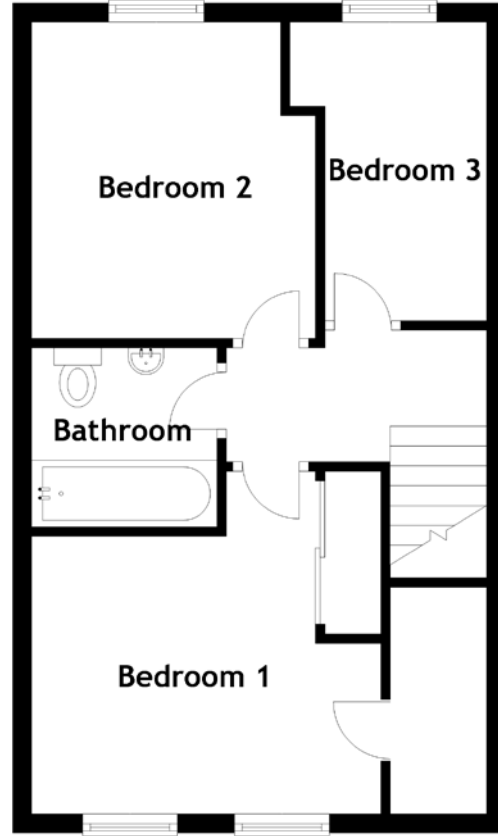
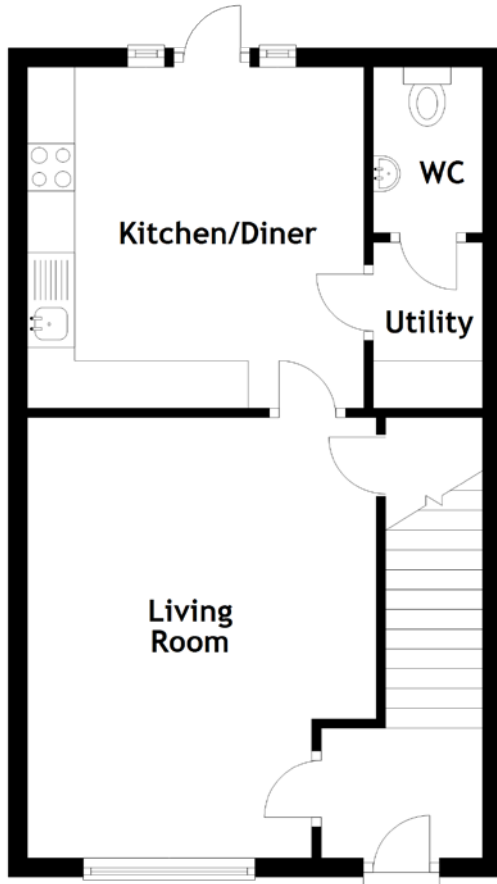


FLOOR PLAN, DIMENSIONS & MAP



Approximate Dimensions
(Taken from the widest point)

Living Room	4.65m (15'3") x 3.68m (12'1")
Kitchen/Diner	3.60m (11'10") x 3.55m (11'8")
Utility	2.00m (6'7") x 1.15m (3'9")
WC	1.75m (5'9") x 1.15m (3'9")

Bedroom 1	3.94m (12'11") x 3.61m (11'10")
Bedroom 2	3.33m (10'11") x 2.99m (9'10")
Bedroom 3	3.15m (10'4") x 2.08m (6'10")
Bathroom	1.95m (6'5") x 1.89m (6'2")

Gross internal floor area (m²): 81m²
EPC Rating: B

