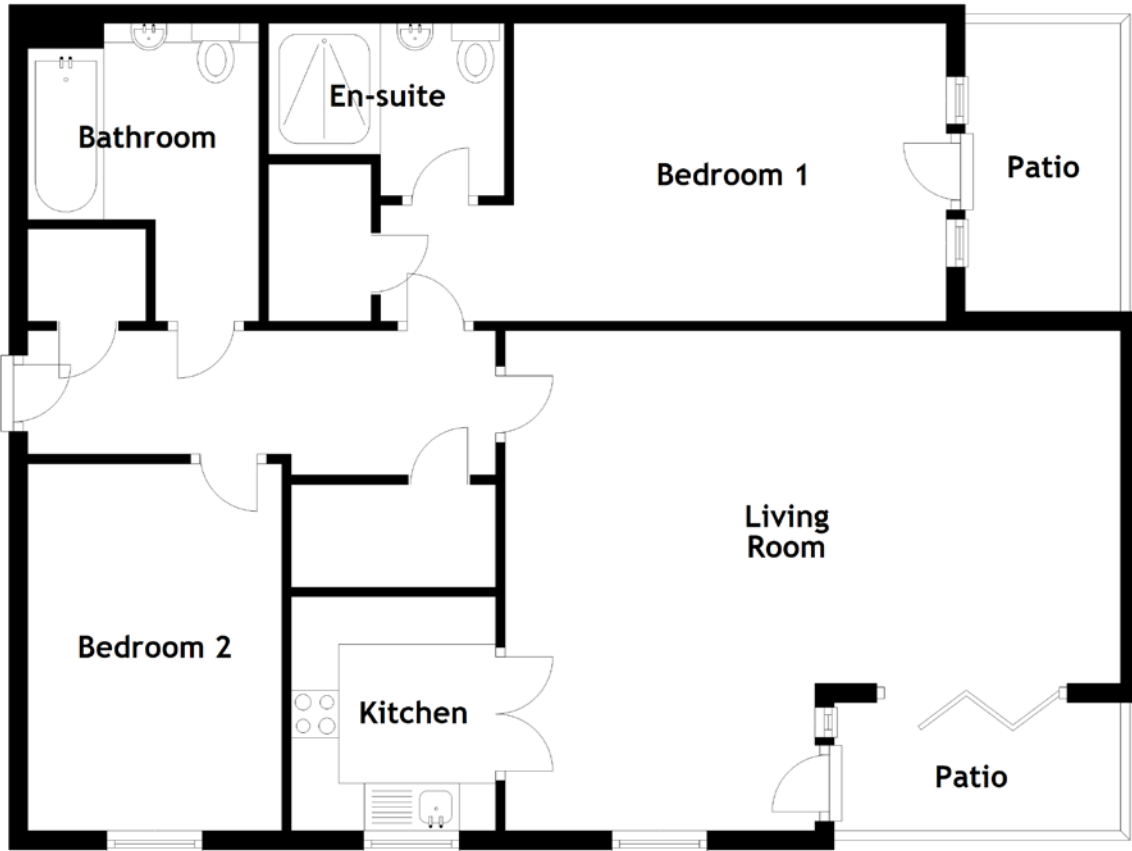


# FLOOR PLAN, DIMENSIONS & MAP



Approximate Dimensions  
(Taken from the widest point)

Living Room 6.47m (21'3") x 5.26m (17'3")  
 Kitchen 2.46m (8'1") x 2.15m (7'1")  
 Bathroom 3.13m (10'3") x 2.43m (8')

Bedroom 1 5.95m (19'6") x 3.10m (10'2")  
 En-suite 2.48m (8'2") x 1.81m (5'11")  
 Bedroom 2 3.86m (12'8") x 2.67m (8'9")

Gross internal floor area (m<sup>2</sup>): 88m<sup>2</sup>  
 EPC Rating: B

