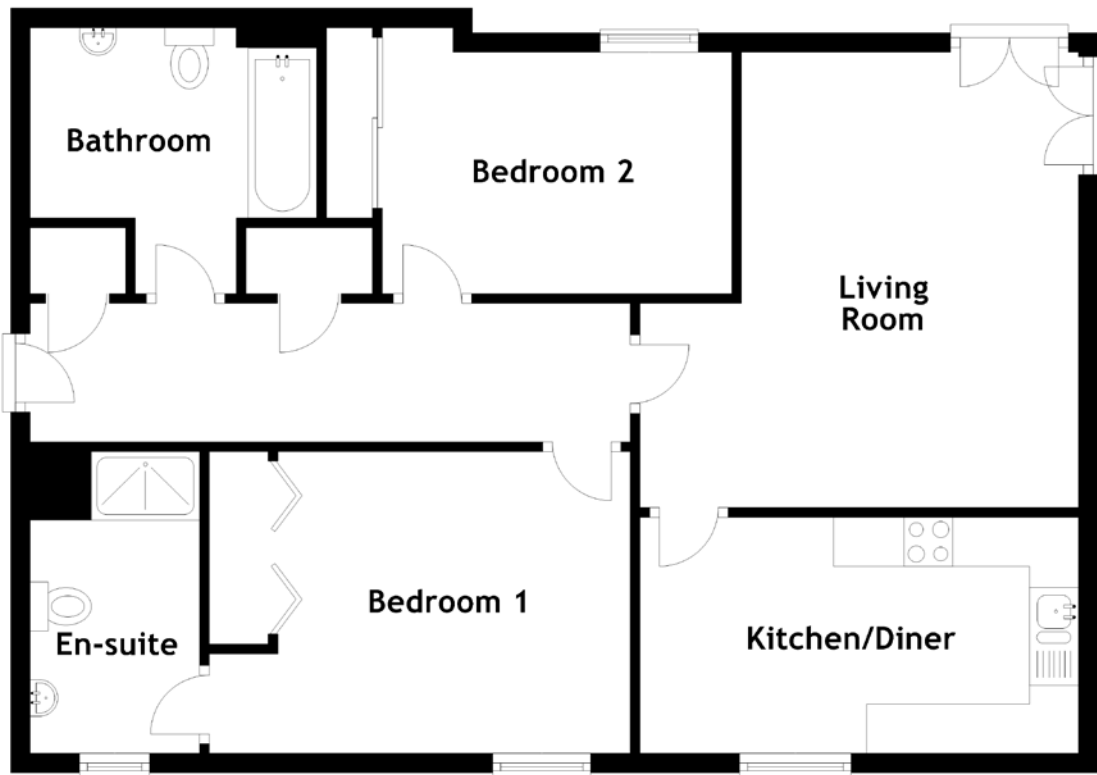


FLOOR PLAN, DIMENSIONS & MAP



Approximate Dimensions
(Taken from the widest point)

Living Room 4.65m (15'3") x 4.48m (14'8")
 Kitchen/Diner 4.48m (14'8") x 2.41m (7'11")
 Bedroom 1 4.30m (14'1") x 3.08m (10'1")

En-suite 3.08m (10'1") x 1.73m (5'8")
 Bedroom 2 3.57m (11'9") x 2.69m (8'10")
 Bathroom 2.93m (9'7") x 2.72m (8'11")

Gross internal floor area (m²): 78m²
 EPC Rating: C

