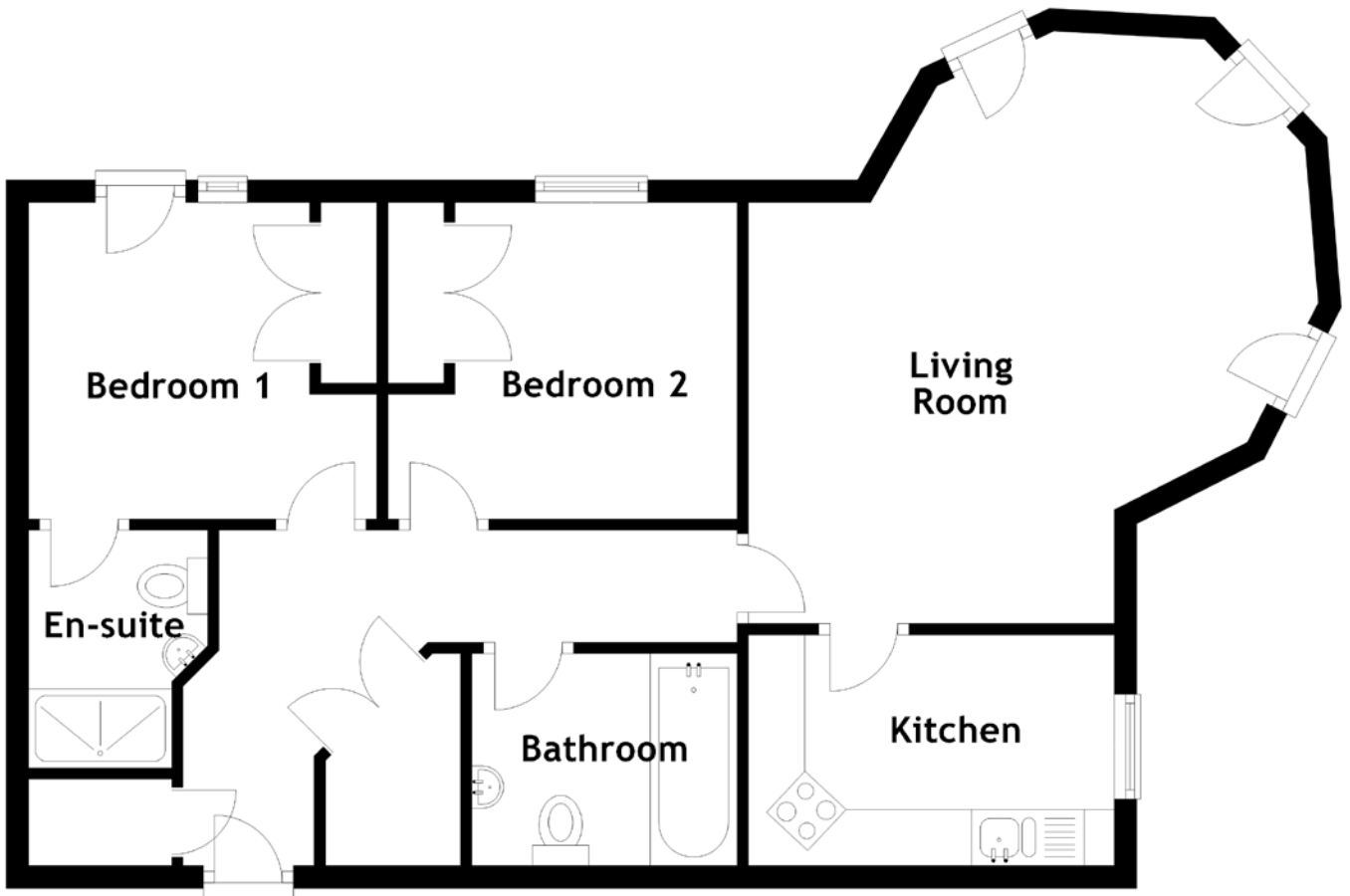


FLOOR PLAN, DIMENSIONS & MAP



Approximate Dimensions (Taken from the widest point)

Living Room 3.74m (12'3") x 3.25m (10'8")
 Kitchen 3.25m (10'8") x 2.05m (6'9")
 Bedroom 1 3.09m (10'2") x 2.81m (9'3")

En-suite 2.11m (6'11") x 1.59m (5'3")
 Bedroom 2 3.10m (10'2") x 2.81m (9'3")
 Bathroom 2.36m (7'9") x 1.88m (6'2")

Gross internal floor area (m²): 61m² | EPC Rating: B

