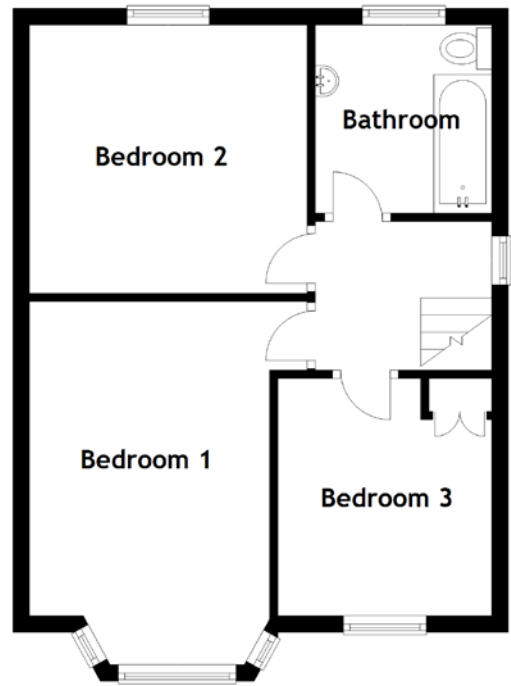
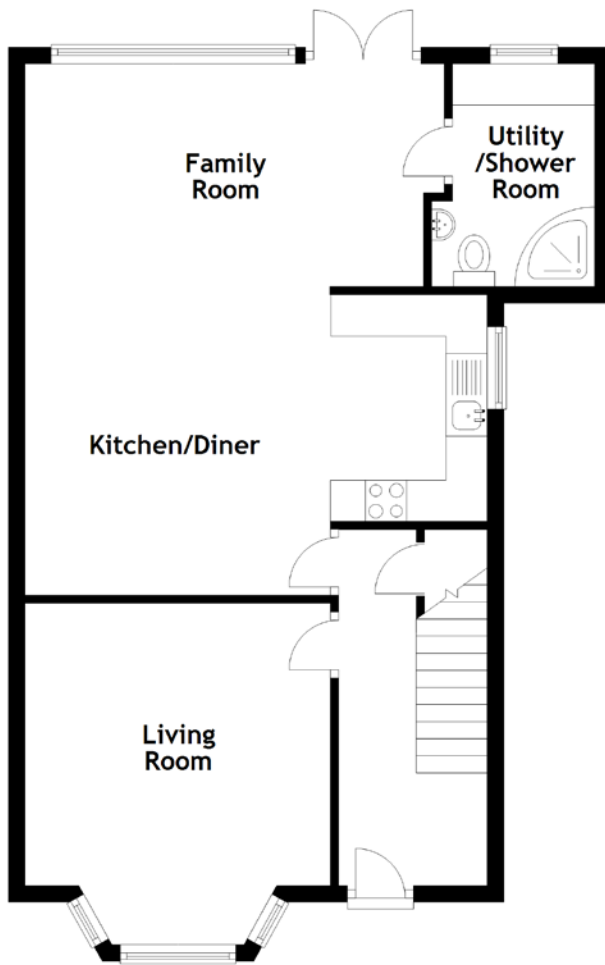


FLOOR PLAN, DIMENSIONS & MAP



Approximate Dimensions (Taken from the widest point)

Living Room	4.06m (13'4") max x 3.70m (12'2")
Kitchen/Diner	5.60m (18'4") x 3.64m (11'11")
Family Room	5.08m (16'8") x 2.70m (8'10")
Utility /Shower Room	2.70m (8'10") x 1.91m (6'3")

Bedroom 1	4.40m (14'5") x 3.36m (11')
Bedroom 2	3.36m (11') x 3.25m (10'8")
Bedroom 3	2.88m (9'5") x 2.59m (8'6")
Bathroom	2.43m (8') x 1.89m (6'2")

Gross internal floor area (m²): 104m² | EPC Rating: C

