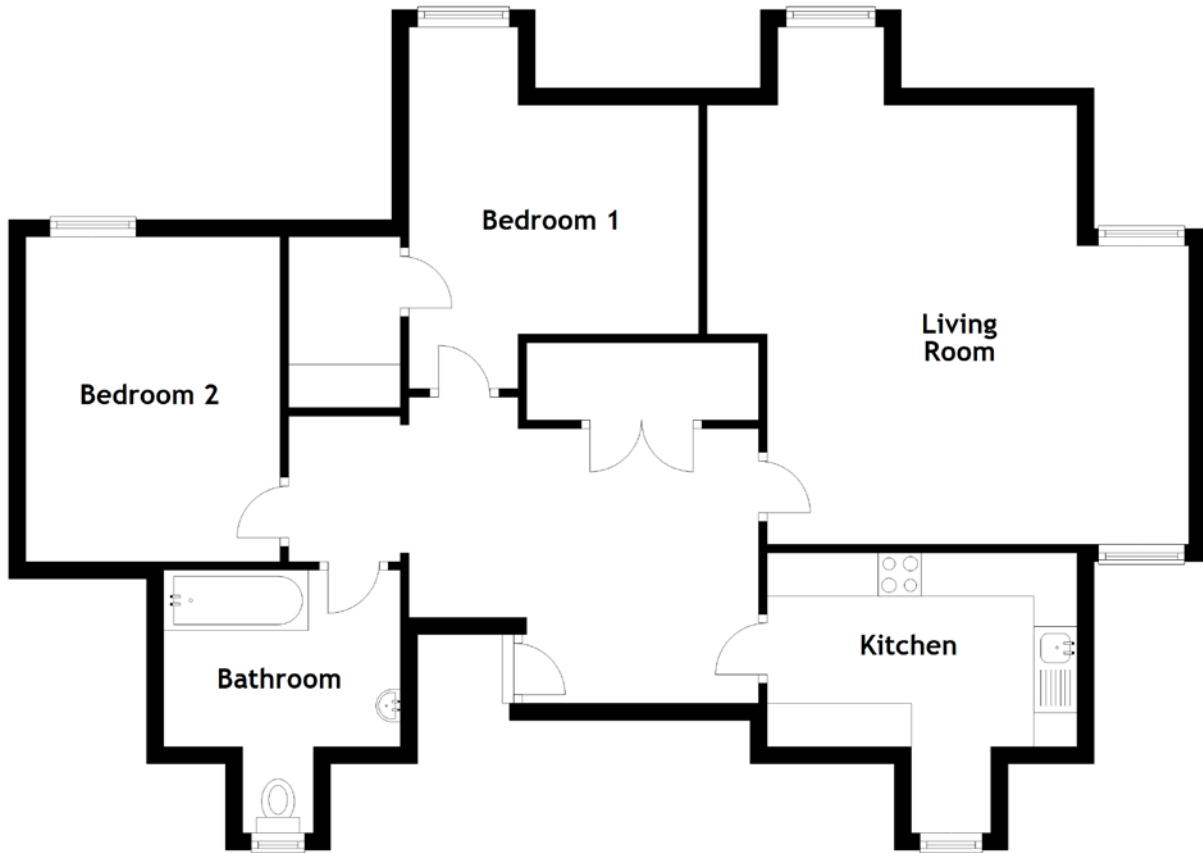


FLOOR PLAN, DIMENSIONS & MAP



Approximate Dimensions (Taken from the widest point)

Living Room 7.64m (25'1") x 5.60m (18'4")
 Kitchen 3.60m (11'10") x 3.25m (10'8")
 Bathroom 3.05m (10') x 2.75m (9')

Bedroom 1 4.20m (13'9") x 3.37m (11'1")
 Bedroom 2 3.75m (12'4") x 2.95m (9'8")

Gross internal floor area (m²): 82m²
 EPC Rating: E

