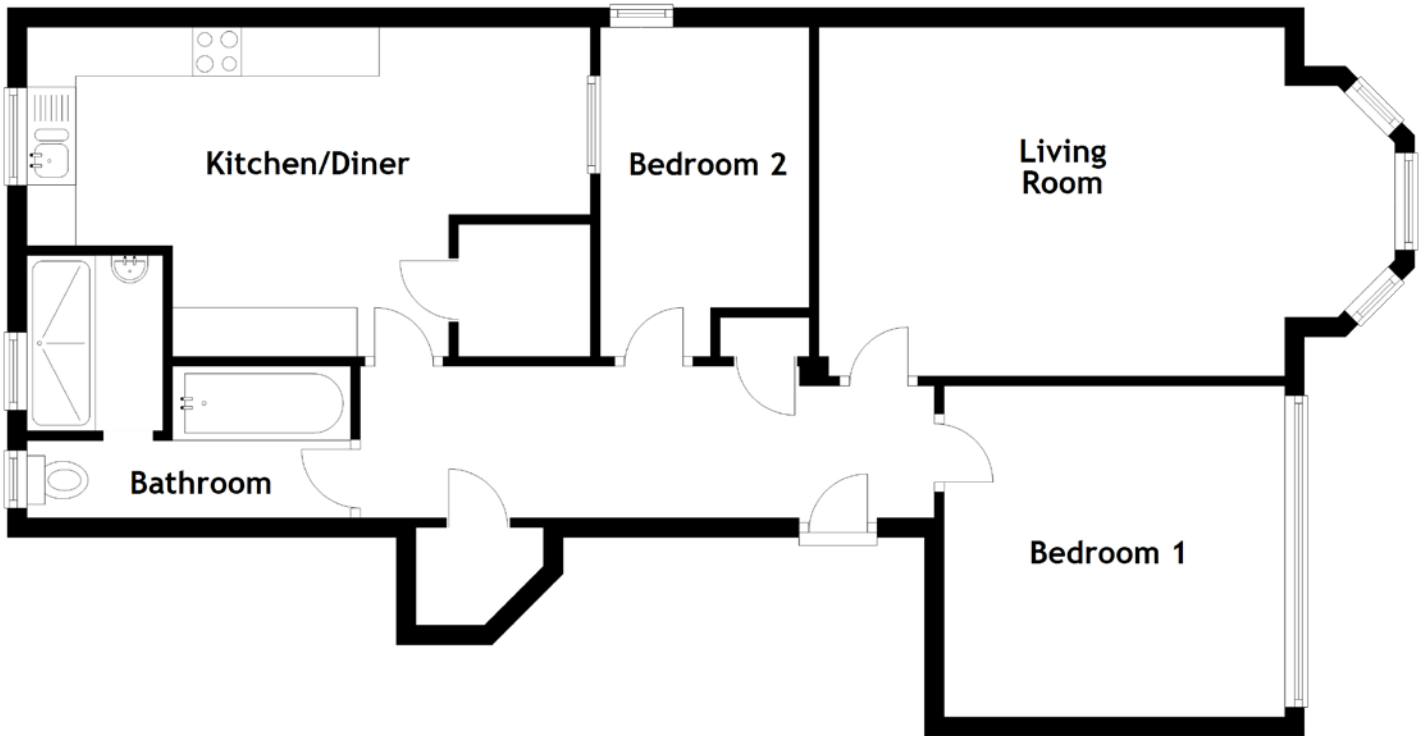


# FLOOR PLAN, DIMENSIONS & MAP



Approximate Dimensions (Taken from the widest point)

Living Room 5.90m (19'4") x 3.57m (11'9")  
 Kitchen/Diner 5.77m (18'11") x 3.37m (11'1")  
 Bedroom 1 3.49m (11'5") x 3.39m (11'1")

Bedroom 2  
 Bathroom

3.37m (11'1") x 2.14m (7')  
 3.31m (10'10") x 2.85m (9'4")

Gross internal floor area (m<sup>2</sup>): 75m<sup>2</sup>  
 EPC Rating: D

