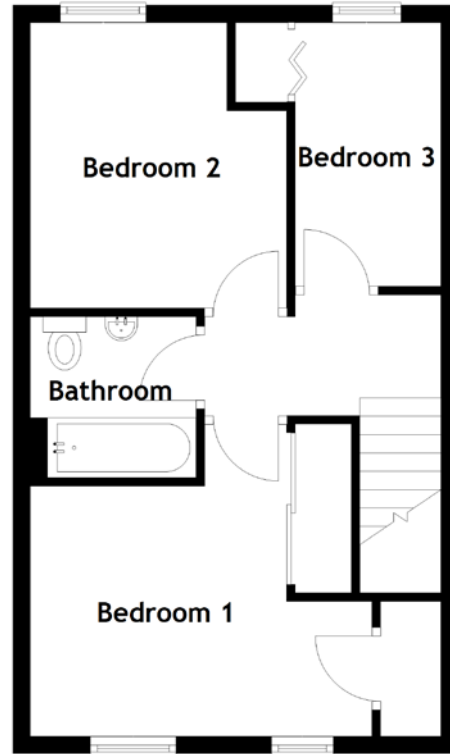
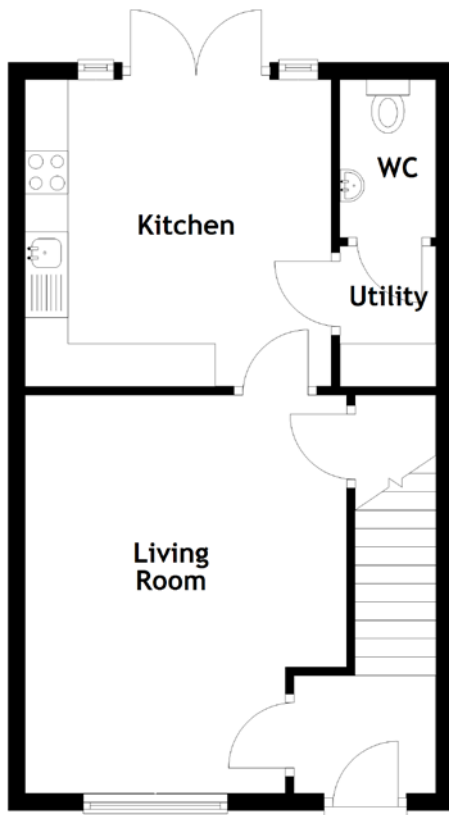


FLOOR PLAN, DIMENSIONS & MAP



Approximate Dimensions
(Taken from the widest point)

Living Room	4.65m (15'3") x 3.75m (12'4")
Kitchen	3.58m (11'9") x 3.57m (11'9")
Utility	1.64m (5'5") x 1.12m (3'8")
WC	1.84m (6') x 1.12m (3'8")

Bedroom 1	3.80m (12'6") x 3.64m (11'11")
Bedroom 2	3.33m (10'11") x 3.00m (9'10")
Bedroom 3	3.08m (10'1") x 1.70m (5'7")
Bathroom	1.94m (6'4") x 1.88m (6'2")

Gross internal floor area (m²): 81m²
EPC Rating: B

