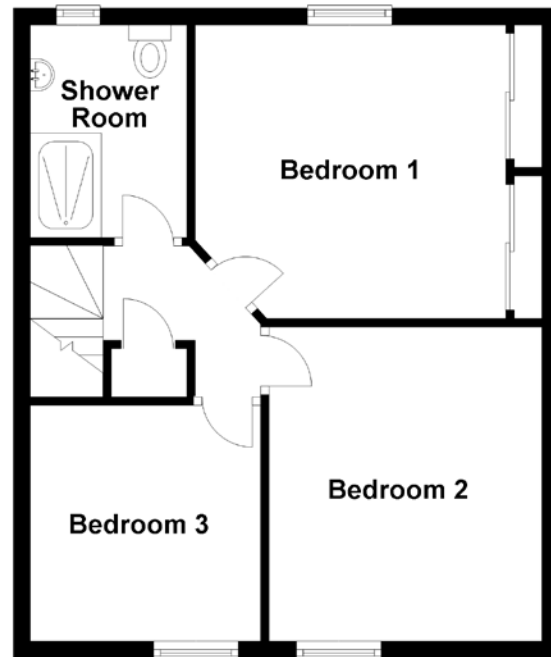
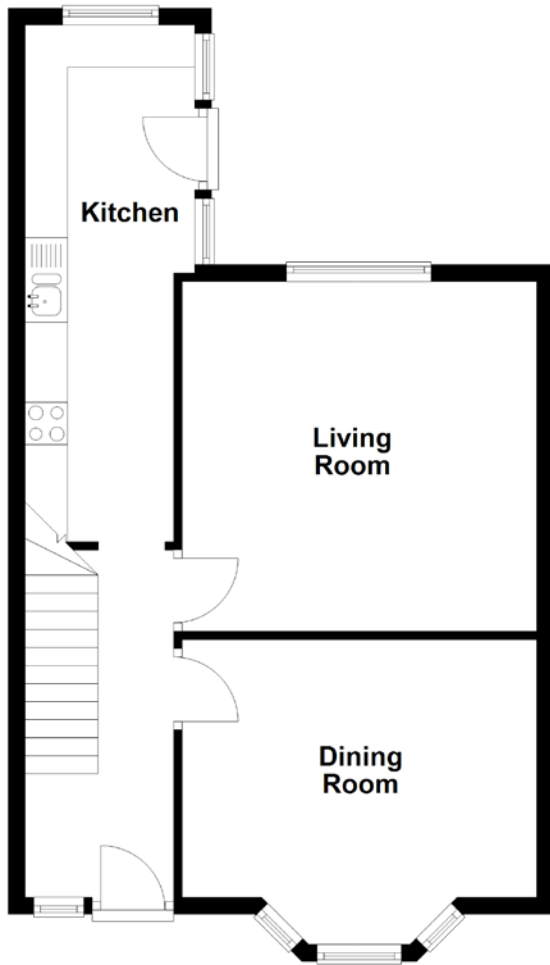


FLOOR PLAN, DIMENSIONS & MAP



Approximate Dimensions (Taken from the widest point)

Living Room	4.19m (13'9") x 4.13m (13'7")
Dining Room	4.19m (13'9") x 3.60m (11'10")
Kitchen	6.10m (20') x 1.86m (6'1")
Bedroom 1	3.67m (12') x 3.47m (11'4")

Bedroom 2	3.71m (12'2") x 3.22m (10'7")
Bedroom 3	2.78m (9'2") x 2.72m (8'11")
Shower Room	2.51m (8'3") x 1.85m (6'1")

Gross internal floor area (m²): 109m²
EPC Rating: D

