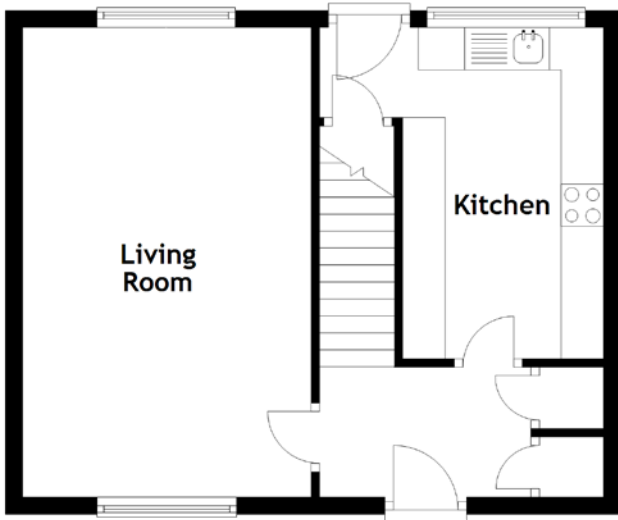


FLOOR PLAN, DIMENSIONS & MAP



Approximate Dimensions
(Taken from the widest point)

| | |
|-------------|-------------------------------|
| Living Room | 5.54m (18'2") x 3.40m (11'2") |
| Kitchen | 3.87m (12'8") x 3.35m (11') |
| Bathroom | 2.80m (9'2") x 2.53m (8'4") |

| | |
|-----------|------------------------------|
| Bedroom 1 | 3.76m (12'4") x 2.89m (9'6") |
| Bedroom 2 | 4.31m (14'2") x 2.60m (8'6") |
| Bedroom 3 | 2.83m (9'3") x 2.45m (8') |

Gross internal floor area (m²): 83m²
EPC Rating: C

