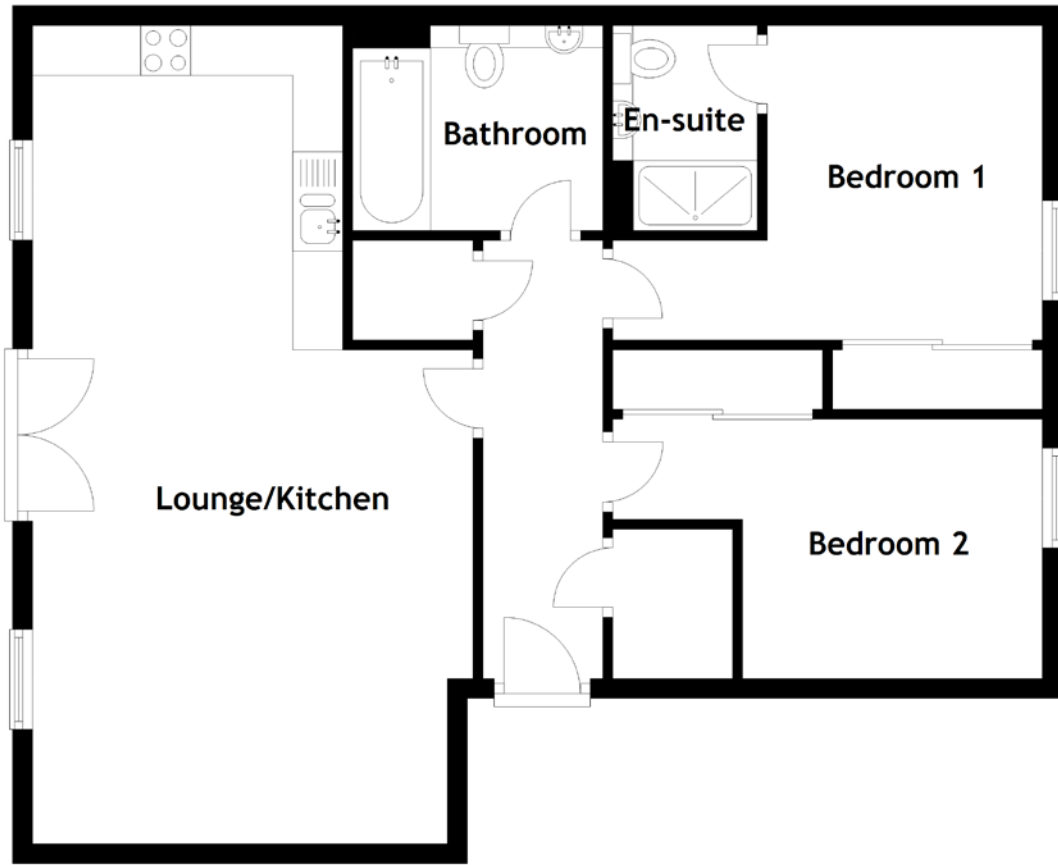


FLOOR PLAN, DIMENSIONS & MAP



Approximate Dimensions (Taken from the widest point)

Lounge/Kitchen 8.20m (26'11") x 4.35m (14'3")
Bedroom 1 4.30m (14'1") x 3.15m (10'4")
En-suite 2.05m (6'9") x 1.45m (4'9")

Bedroom 2 4.30m (14'1") x 2.60m (8'6")
Bathroom 2.50m (8'3") x 2.05m (6'9")

Gross internal floor area (m²): 83m²
EPC Rating: C

