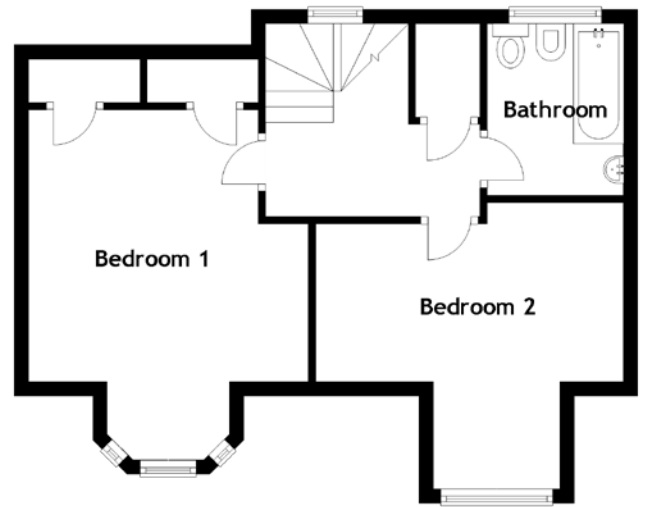
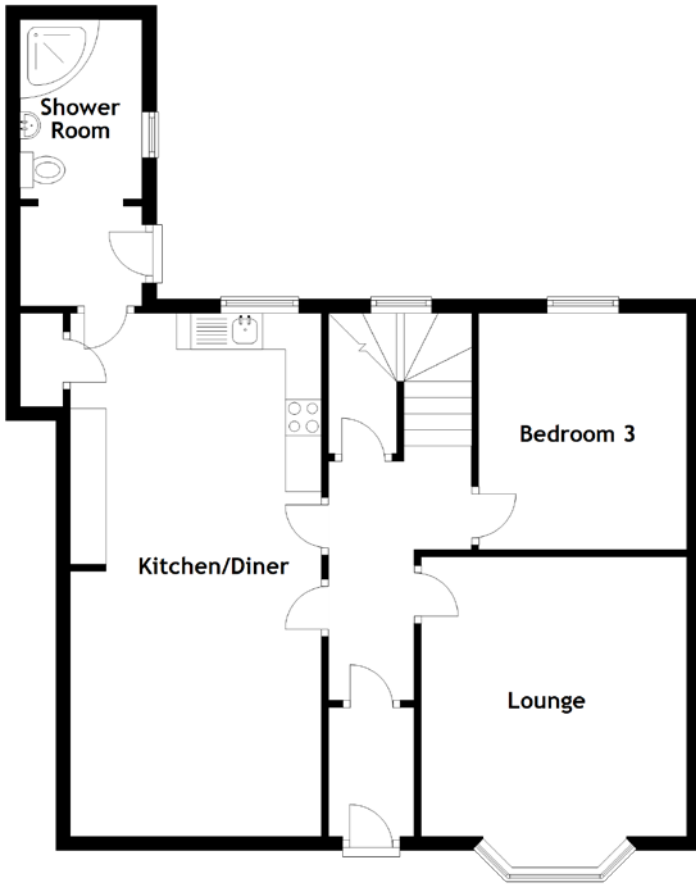


FLOOR PLAN, DIMENSIONS & MAP



Approximate Dimensions (Taken from the widest point)

Lounge	3.90m (12'10") x 3.70m (12'2")
Kitchen/Diner	7.30m (23'11") x 3.50m (11'6")
Bedroom 3	3.30m (10'10") x 2.90m (9'6")
Shower Room	2.50m (8'2") x 1.70m (5'7")

Bathroom	2.40m (7'10") x 1.90m (6'3")
Bedroom 1	3.90m (12'10") x 3.80m (12'6")
Bedroom 2	4.30m (14'1") x 4.00m (13'1")

Gross internal floor area (m²): 108m²
EPC Rating: E

