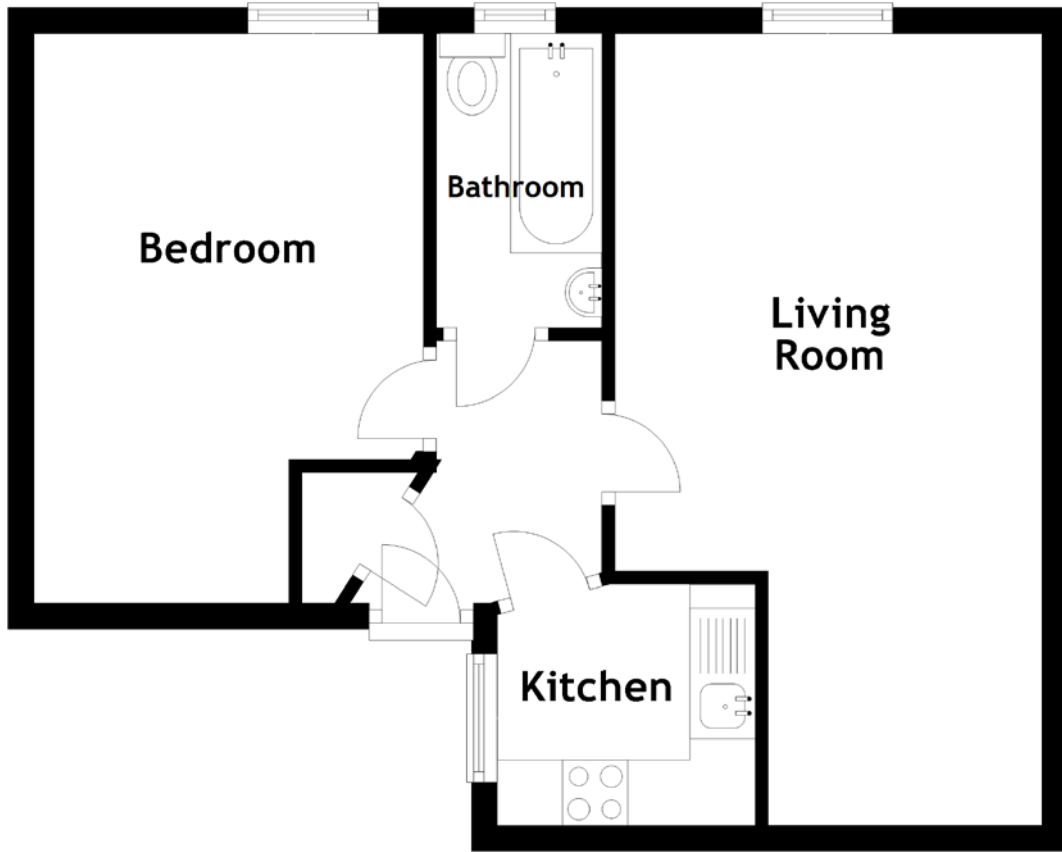


FLOOR PLAN, DIMENSIONS & MAP



Approximate Dimensions
(Taken from the widest point)

Living Room 6.06m (19'11") x 3.27m (10'9")
Kitchen 1.98m (6'6") x 1.85m (6'1")

Bathroom 2.25m (7'5") x 1.27m (4'2")
Bedroom 4.36m (14'4") x 2.98m (9'9")

Gross internal floor area (m²): 44m²
EPC Rating: D

