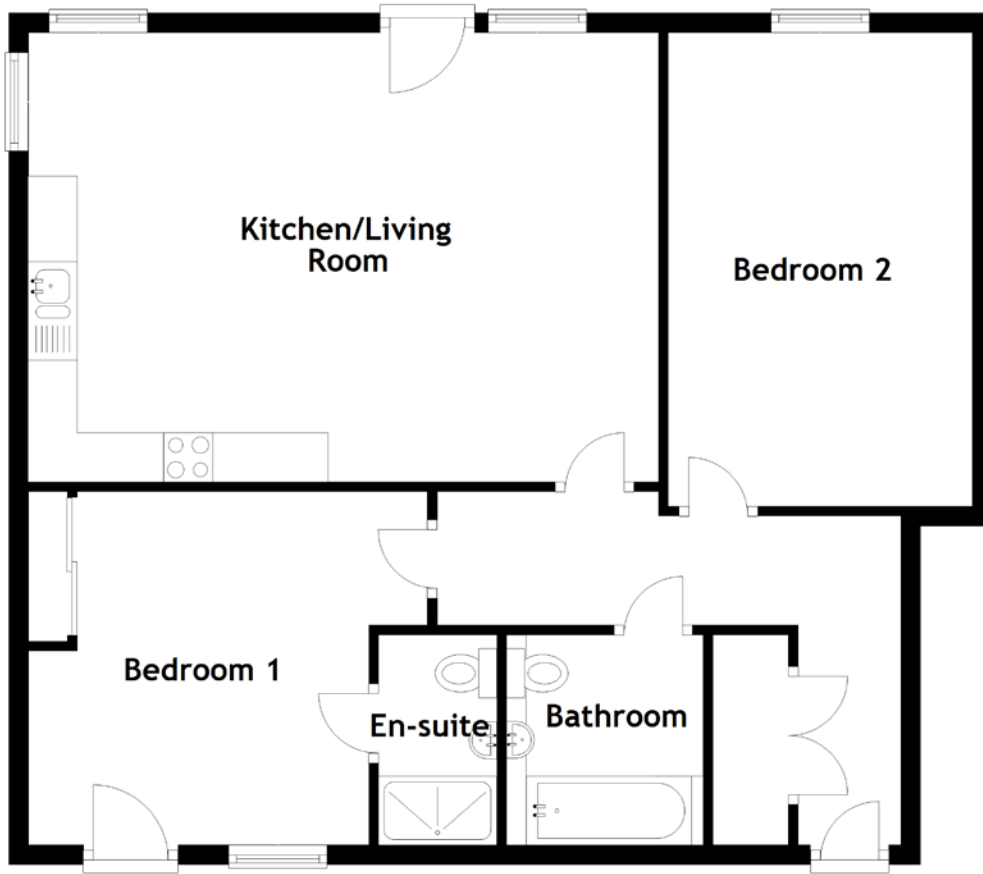


FLOOR PLAN, DIMENSIONS & MAP



Approximate Dimensions (Taken from the widest point)

Kitchen/Living Room 6.41m (21') x 4.57m (15')
 Bedroom 1 3.90m (12'10") x 3.59m (11'9")
 En-suite 2.13m (7') x 1.20m (3'11")

Bedroom 2 4.57m (15') x 3.09m (10'2")
 Bathroom 2.13m (7') x 2.00m (6'7")

Gross internal floor area (m²): 78m²
 EPC Rating: B

