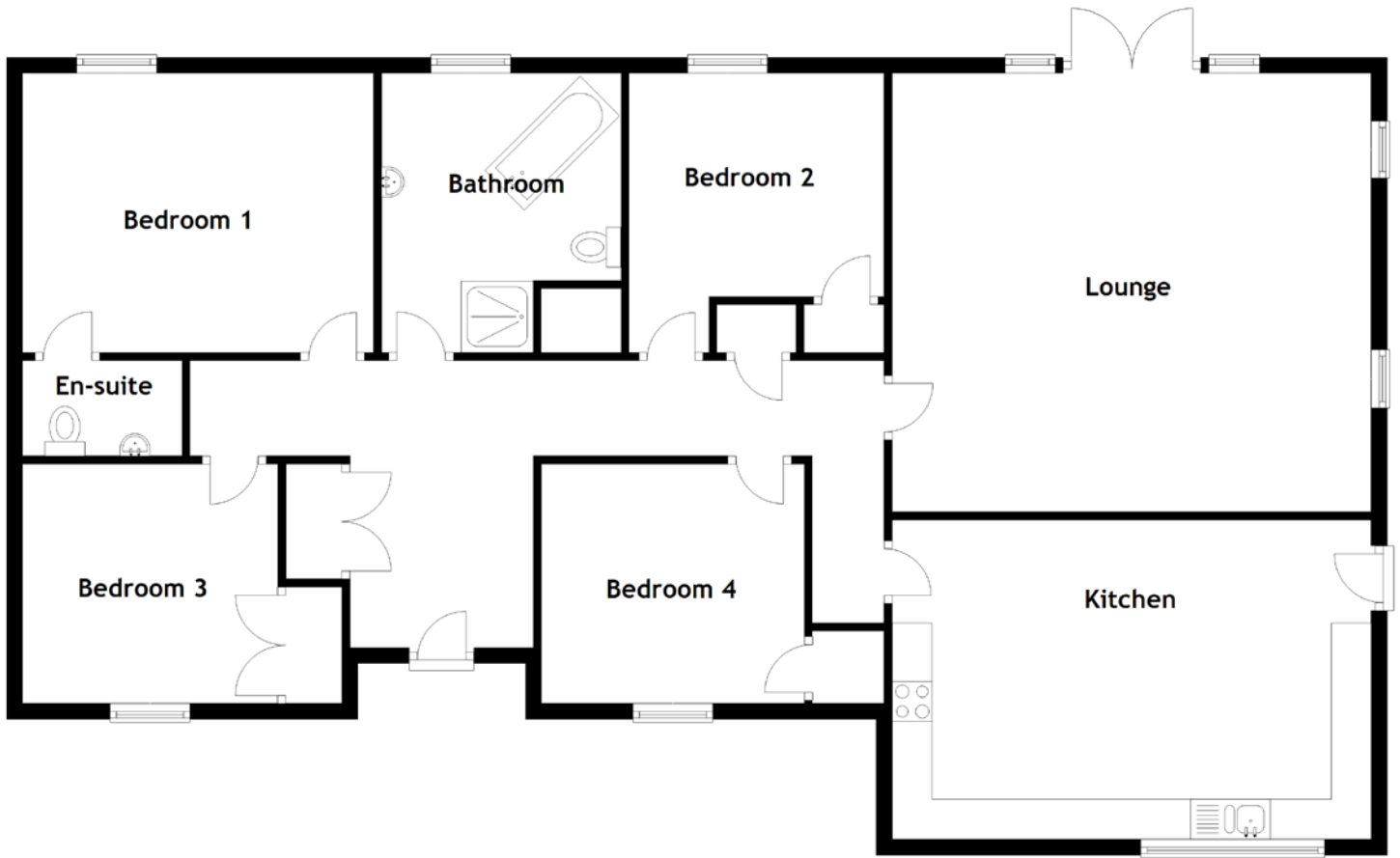


# FLOOR PLAN, DIMENSIONS & MAP



Approximate Dimensions (Taken from the widest point)

Lounge	6.00m (19'8") x 5.50m (18'1")
Kitchen	6.00m (19'8") x 4.00m (13'1")
Bathroom	3.50m (11'6") x 3.00m (9'10")
Bedroom 1	4.40m (14'5") x 3.50m (11'6")
En-suite	2.00m (6'7") x 1.20m (3'11")
Bedroom 2	3.50m (11'6") x 3.20m (10'6")

Bedroom 3	3.20m (10'6") x 3.00m (9'10")
Bedroom 4	3.30m (10'10") x 3.00m (9'10")

Gross internal floor area (m<sup>2</sup>): 138m<sup>2</sup>  
EPC Rating: D

Extras: Floor coverings, fitted appliances, light fittings and blinds are included in the sale.

