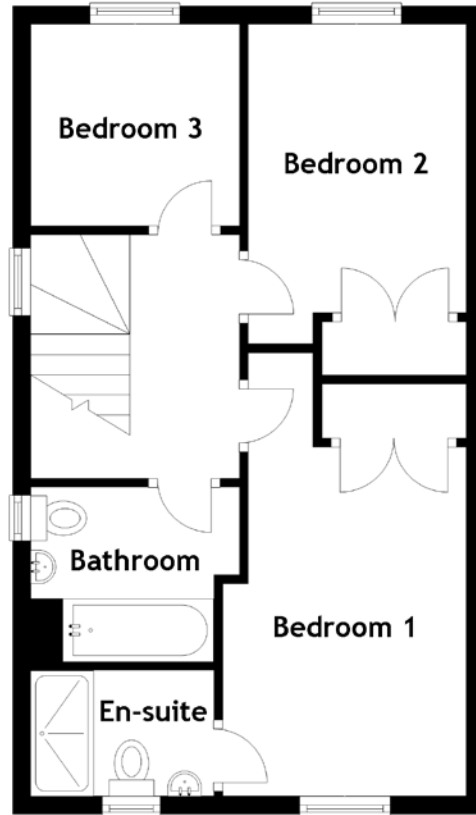
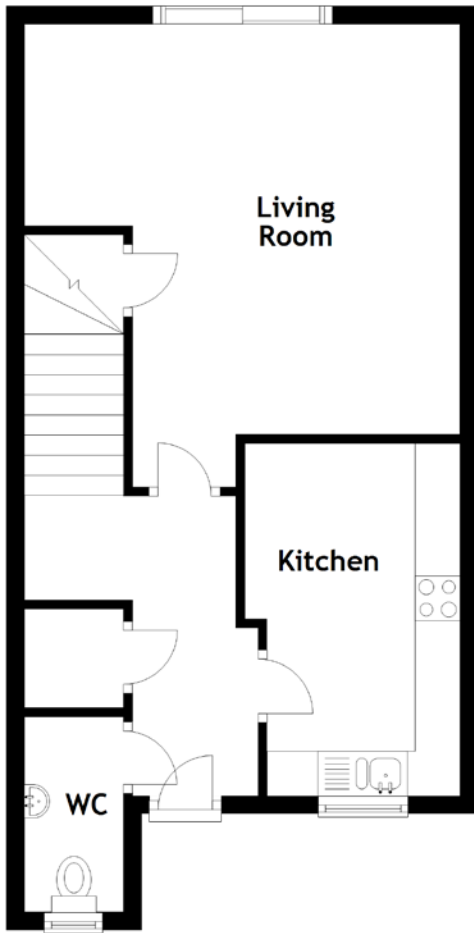


FLOOR PLAN, DIMENSIONS & MAP



Approximate Dimensions
(Taken from the widest point)

Living Room	4.57m (15') x 3.65m (12')
Kitchen	3.93m (12'11") x 2.15m (7'1")
WC	2.17m (7'2") x 1.10m (3'7")
Bedroom 1	4.94m (16'2") x 2.71m (8'11")
En-suite	1.98m (6'6") x 1.40m (4'7")
Bedroom 2	3.56m (11'8") x 2.43m (8')

Bedroom 3	2.32m (7'7") x 2.25m (7'4")
Bathroom	2.19m (7'2") x 1.94m (6'4")

Gross internal floor area (m²): 85m²
EPC Rating: C

Extras: All fitted carpets are included. The living room and sewing room/smallest room lights are not included but will be replaced.

