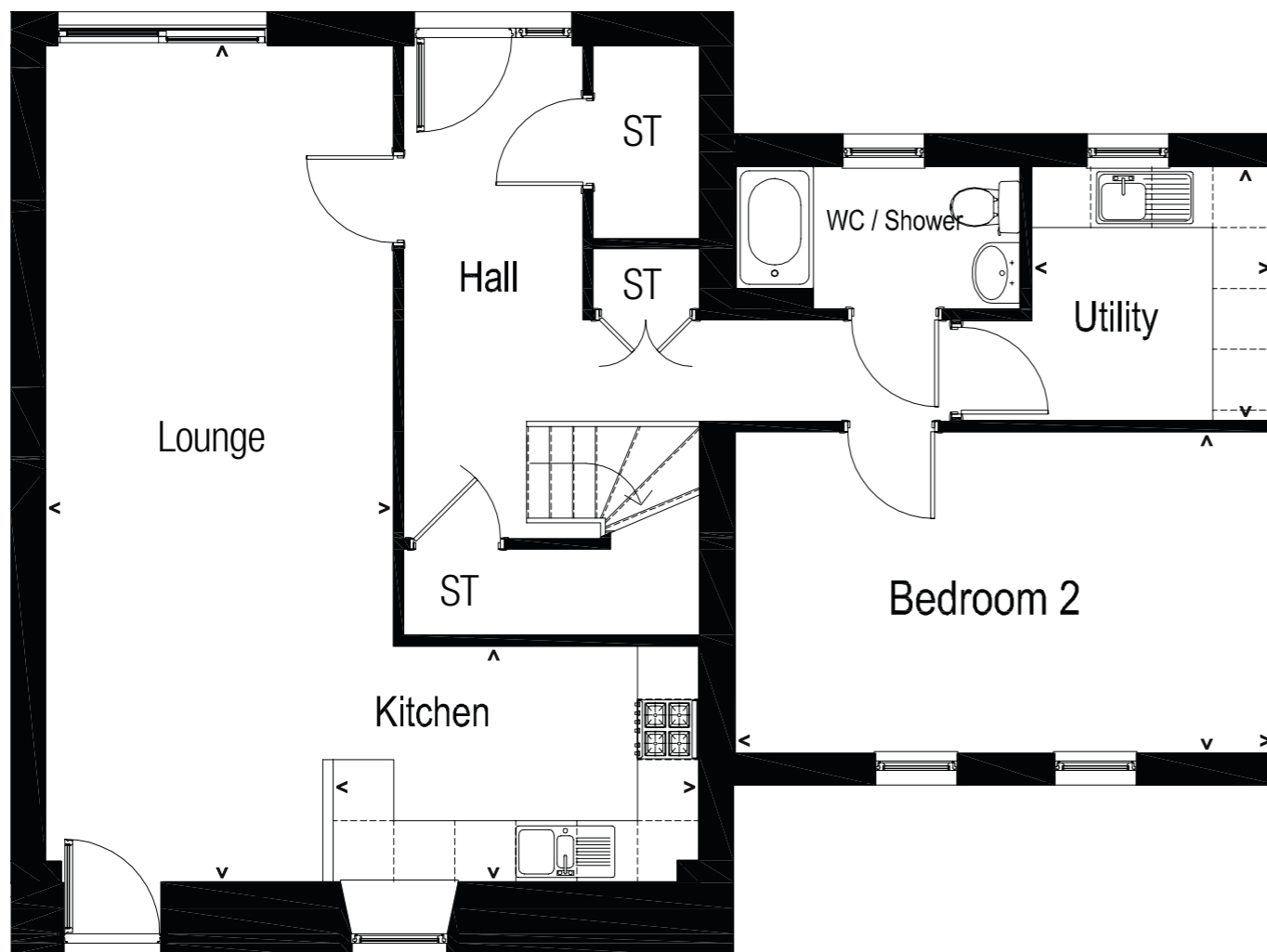


Plot 30

Dovecote Steadings



Lounge

3.40 x 8.20m / 11.16 x 26.90ft

Kitchen

3.60 x 2.30m / 11.81 x 7.55ft

Utility

1.95 x 2.50m / 6.40 x 8.20ft

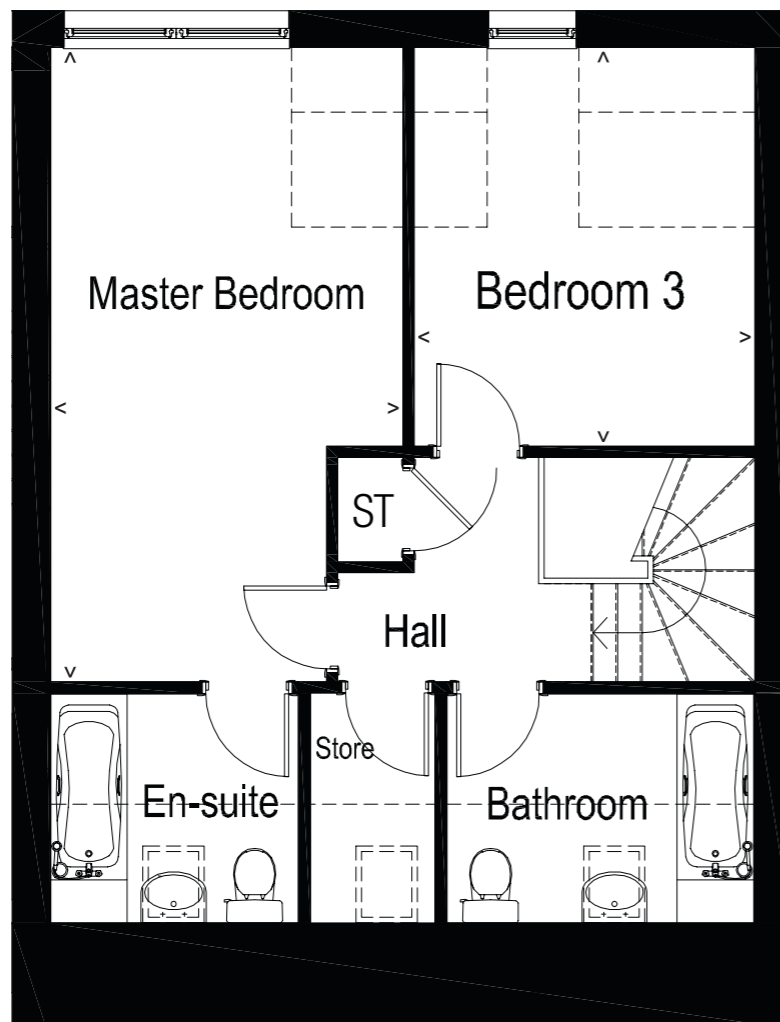
Bedroom 2

4.90 x 3.15m / 16.08 x 10.33ft

Ground Floor

Plot 30

Dovecote Steadings



Master Bedroom

3.05 x 3.20m / 10.01 x 10.17ft
(3.65 x 3.20m / 11.98 x 10.50ft)

Bedroom 3

3.05 x 3.10m / 10.01 x 10.17ft
(3.65 x 3.10m / 11.98 x 10.17ft)

First Floor