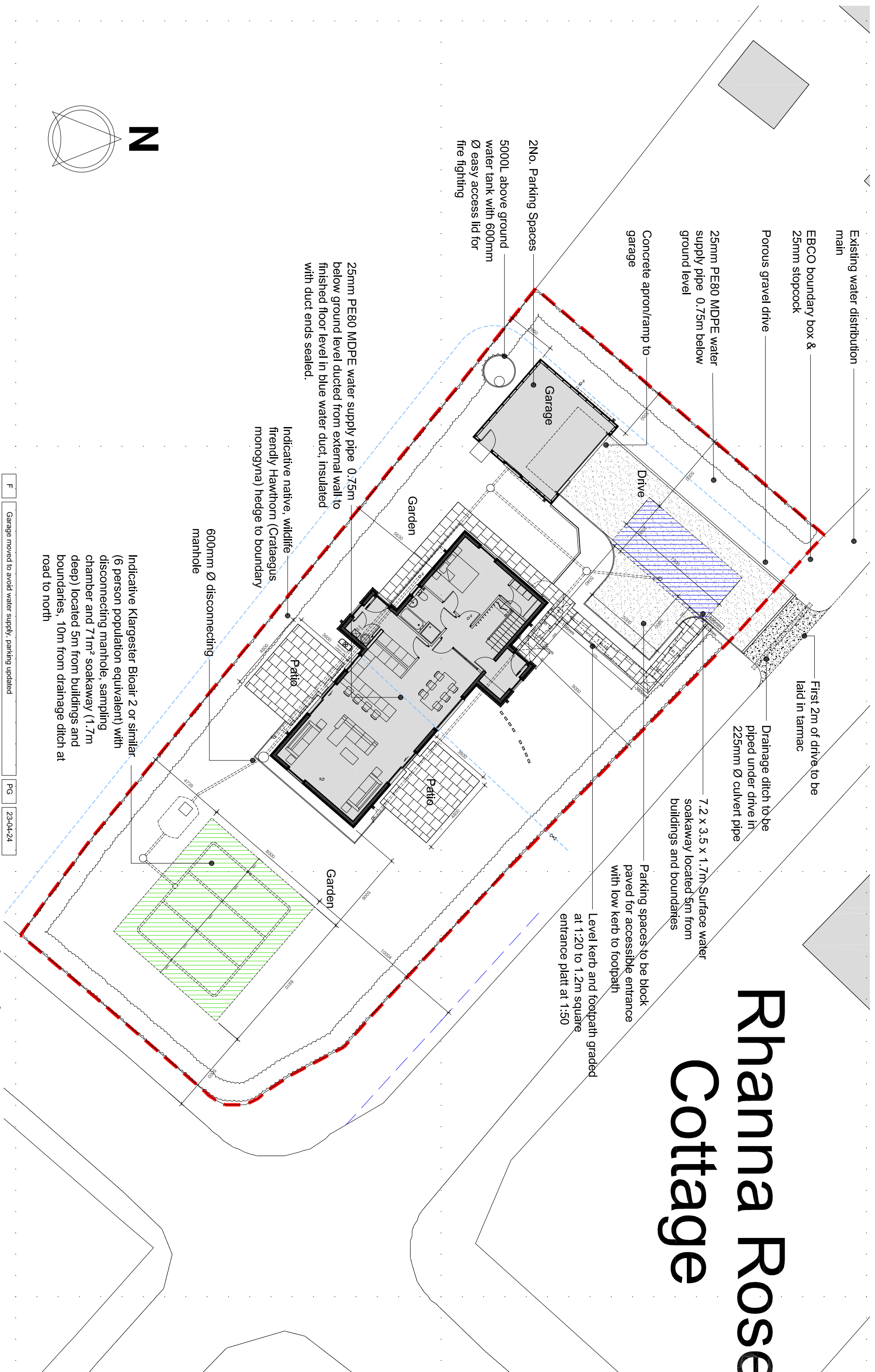


Rhanna Rose Cottage



Existing water distribution main

EBCO boundary box & 25mm stopcock

Porous gravel drive

25mm PE80 MDPE water supply pipe 0.75m below ground level

Concrete apron/ramp to garage

2No. Parking Spaces

5000L above ground water tank with 600mm Ø easy access lid for fire fighting

25mm PE80 MDPE water supply pipe 0.75m below ground level ducted from external wall to finished floor level in blue water duct, insulated with duct ends sealed.

Indicative native, wildlife friendly Hawthorn (Crataegus monogyna) hedge to boundary

Indicative Klargestær Bioair 2 or similar (6 person population equivalent) with disconnecting manhole, sampling chamber and 71m² soakaway (1.7m deep) located 5m from buildings and boundaries, 10m from drainage ditch at road to north

First 2m of drive to be laid in tarmac

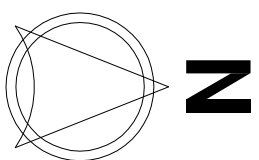
Drainage ditch to be piped under drive in 225mm Ø culvert pipe

7.2 x 3.5 x 1.7m Surface water soakaway located 5m from buildings and boundaries

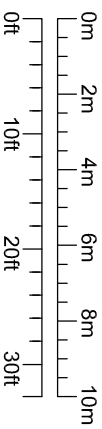
Parking spaces to be block paved for accessible entrance with low kerb to footpath

Level kerb and footpath graded at 1:20 to 1.2m square entrance platt at 1:50

Proposed Site Plan



Drawing Scale 1:200



F	Garage moved to avoid water supply, parking updated	PG	23-04-24
E	Garage moved to avoid water supply, parking updated	PG	26-10-23
D	Sewage treatment plant relocated & drainage field reoriented	PG	04-09-23
C	Water tank added behind garage for fire fighting.	PG	21-08-23
B	House relocated 3m away from overhead power lines, soakaway updated	PG	30-06-23
A	Water supply details added.	PG	20-04-23
REV.		Int.	Date

Archid
Architects Limited
22 Riverside Road, Wormit
Newport on Tay, Fife DD6 8LS
Tel: 01382 542883
info@archidarchitects.co.uk

JOB TITLE
New House at Burnside of Kirkbuddo
Forfar, Angus DD8 2NR
CLIENT
Aitlie Green Low Energy Homes
DRAWING TITLE
Proposed Site Plan

SCALE
1:200
DATE
Mar 2023
JOB NUMBER
0437
DRAWING NUMBER
L(90)005

ORIGINAL
A3
DRAWN
PG
CHECKED
PG
REVISION
F