

first for homes

first for property in life - [firstforhomes.co.uk](https://www.firstforhomes.co.uk)

Contact Allan England's Team

01592 752 944



Skibo Avenue, Glenrothes

Offers over £109,995

Skibo Avenue, Glenrothes

Beautifully Presented 2 Bedroom Mid-Terraced Villa Situated In The Desired Area Of Pitteuchar, Glenrothes!

Allan England's team at first for homes welcome to the market this lovely 2 bedroom mid terraced villa situated in the desired area of Pittechaur, Glenrothes! This property comprises; entrance hallway, bright lounge, open plan kitchen/diner with integrated appliances. Stairs to upper level provide 2 double bedrooms with ample storage cupboards and family shower room. Externally there is a landscaped easily maintained rear garden and sufficient street parking. This property is in close proximity to all local amenities including shops, doctors surgery and the 2 local schools and nurseries. This bright and spacious property would make the most perfect first family home or buy to let investment. Early viewing is recommended to ensure you don't miss out!

HOME REPORT - £115,000

EPC - C

COUNCIL TAX - A

Call first for homes - first for trust... first for service... first for aftercare.

Glenrothes is regarded as one of the most successful Towns in Scotland with a wealth of local amenities including Kingdom Shopping Centre as well as sport and leisure at Michael Woods and a multi-screen cinema. Glenrothes boasts its very own 18-hole Golf course and both Primary and Secondary schooling are available. For the commuter the A92 allows swift access to Edinburgh and there are railway stations at both Thornton and Markinch.

- Beautifully Presented 2 Bed Mid Terraced Villa
- Open Plan Kitchen/Diner
- Bright Lounge
- 2 Double Bedrooms With Storage
- Landscaped Rear Garden Easily Maintained
- Ample Street Parking
- Sought After Location in Pitteuchar
- EPC Rating- C
- Council Tax Band- A
- Home Report Value- £115,000





SITUATION – Glenrothes

ENTRANCE HALLWAY

OPEN PLAN KITCHEN/DINER

17'10" x 8'1" (approx) (5.44m x 2.48m (approx))

LOUNGE

13'4" x 11'4" (approx) (4.07m x 3.46m (approx))

STAIRS TO UPPER LEVEL

BEDROOM 1

14'7" x 9'6" (approx) (4.45m x 2.92m (approx))

BEDROOM 2

11'4" x 9'10" (approx) (3.46m x 3.02m (approx))

SHOWER ROOM

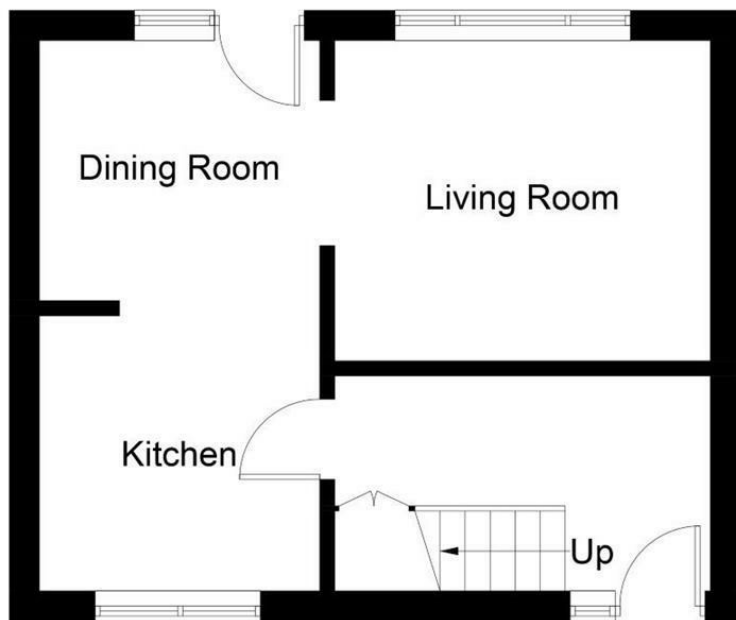
6'2" x 6'0" (approx) (1.88m x 1.85m (approx))

LANDSCAPED REAR GARDEN

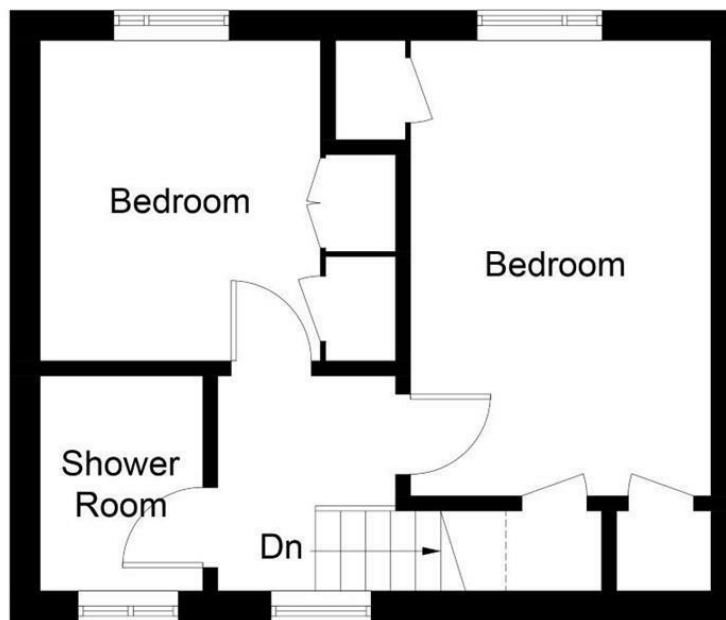
STREET PARKING

INFORMATION





Ground Floor



First Floor

Illustration for identification purposes only, measurements are approximate, not to scale. floorplansUsketch.com © (ID594618)

first for homes
first for property in life - firstforhomes.co.uk

Contact Allan England's Team
01592 752 944

Information

These particulars are prepared on the basis of information provided by our clients. We have not tested the electrical system or any electrical appliances, nor where applicable, any central heating system. All sizes are recorded by electronic tape measurement to give an indicative, approximate size only. Prospective purchasers should make their own enquiries – no warranty is given or implied. This schedule is not intended to, and does not form any contract.

FREE Valuation

Selling Your Home?

Choose first for homes - a highly experienced estate agency team you can trust to sell your home at the highest possible price. Offering fantastic savings on selling fees, with no compromise on service, free professional photography highlighting your home in its best light, first for homes will be your first choice. Contact us today to arrange your appointment.



first for trust



first for service



first for aftercare

32 North Street, Glenrothes, Fife KY7 5NA
Fax: 01592 807947
sales@firstforhomes.co.uk
www.firstforhomes.co.uk