

first for homes

first for property in life - [firstforhomes.co.uk](https://www.firstforhomes.co.uk)

Contact Allan England's Team

01592 752 944



Lundin Crescent, Glenrothes
Offers over £96,995

Lundin Crescent, Glenrothes

Lovely 2-Bedroom End Terraced Villa On A Large Corner Plot with Driveway Situated In The Sought-After Area of Auchmuty, Glenrothes!

Allan England's Award-Winning Team at first for homes are proud to welcome to the market this lovely end Terraced Family Villa on a large corner plot situated within the sought-after area of Auchmuty, Glenrothes. The property offers lounge/diner, kitchen, 2 bedrooms with built-in cupboards and family bathroom. Externally there are spacious garden grounds to the front and rear with a driveway to the front. The property also benefits from a new roof 2 years ago. Viewing is essential to fully appreciate all this home has to offer. Don't miss out!

Call first for homes - First for trust... first for service... first for aftercare.

RPC Rating - C
Council Tax - B
Home Report Value - £102,000

Glenrothes is regarded as one of the most successful Towns in Scotland with a wealth of local amenities including Kingdom Shopping Centre as well as sport and leisure at Michael Woods and a multi-screen cinema. Glenrothes boasts its very own 18-hole Golf course and both Primary and Secondary schooling are available. For the commuter the A92 allows swift access to Edinburgh and there are railway stations at both Thornton and Markinch.

- 2 Bedroom End Terraced Villa
- Situated On A Large Corner Plot
- Spacious Lounge/Diner
- 2 Double Bedrooms With Built In Wardrobes
- Driveway to Front
- Generous Garden Grounds
- Sought After Area
- EPC - C
- Council Tax - B
- Home Report Value - £102,000





SITUATION – Glenrothes

ENTRANCE HALL

LOUNGE/DINER

20'1" x 10'3" approx (6.13m x 3.14m approx)

KITCHEN 12'0" x 6'0" approx (3.68m x 1.83m approx)

STAIRS TO UPPER LEVEL

BEDROOM 1

13'10" x 9'5" approx (4.22m x 2.89m approx)

BEDROOM 2

10'5" x 10'4" approx (3.20m x 3.16m approx)

FAMILY BATHROOM

6'5" x 5'7" approx (1.98m x 1.72m approx)

FRONT AND REAR GARDEN GROUNDS

DRIVEWAY TO FRONT

INFORMATION



Information

These particulars are prepared on the basis of information provided by our clients. We have not tested the electrical system or any electrical appliances, nor where applicable, any central heating system. All sizes are recorded by electronic tape measurement to give an indicative, approximate size only. Prospective purchasers should make their own enquiries – no warranty is given or implied. This schedule is not intended to, and does not form any contract.

FREE Valuation

Selling Your Home?

Choose first for homes - a highly experienced estate agency team you can trust to sell your home at the highest possible price. Offering fantastic savings on selling fees, with no compromise on service, free professional photography highlighting your home in its best light, first for homes will be your first choice. Contact us today to arrange your appointment.



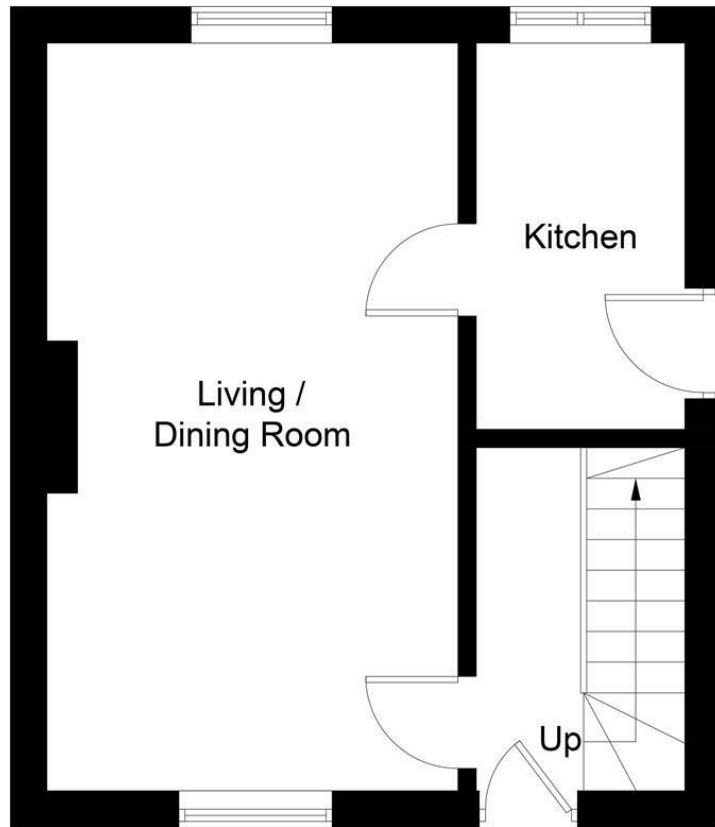
first for trust



first for service



first for aftercare



Ground Floor



First Floor

Illustration for identification purposes only, measurements are approximate, not to scale. floorplansUsketch.com © (ID1076209)

first for homes
first for property in life - firstforhomes.co.uk

Contact Allan England's Team
01592 752 944

32 North Street, Glenrothes, Fife KY7 5NA
Fax: 01592 807947
sales@firstforhomes.co.uk
www.firstforhomes.co.uk