

first for homes

first for property in life - [firstforhomes.co.uk](https://www.firstforhomes.co.uk)

Contact Allan England's Team

01592 752 944



Cameron Crescent, Glenrothes
Offers over £74,995

Cameron Crescent, Glenrothes

2-Bedroom End Terraced Villa In Need Of Modernisation With Single Garage And 1 Car Driveway, Situated In The Desirable Area Of South Parks, Glenrothes.

Allan England's award winning team at first for homes welcome to the market this 2-bedroom end terraced villa with single garage and driveway, situated in the desirable area of south parks, Glenrothes. The property forms a great investment opportunity as is in need of modernisation. The accommodation comprises: entrance hall, lounge, kitchen, 2 bedrooms and family bathroom. Externally boasting front and rear garden grounds. The property also offers a single garage and driveway for 1 car to the front. Early viewing is highly recommended to ensure you don't miss out! Walking distance to local amenities within the Town Centre.

EPC Rating - E
Council Tax Band - B
Home Report Value - £80,000

Call first for homes - first for trust... first for service... first for aftercare.

Glenrothes is regarded as one of the most successful Towns in Scotland with a wealth of local amenities including Kingdom Shopping Centre as well as sport and leisure at Michael Woods and a multi-screen cinema. Glenrothes boasts its very own 18-hole Golf course and both Primary and Secondary schooling are available. For the commuter the A92 allows swift access to Edinburgh and there are railway stations at both Thornton and Markinch.

- 2 Bedroom End-Terraced Villa
- In Need Of Modernisation
- Single Garage & Driveway
- Desirable Area of South Parks, Glenrothes
- Ideal Investment Opportunity
- Viewing Highly Recommended
- EPC Rating- E
- Council Tax Band- B
- Home Report Value- £80,000





SITUATION – Glenrothes

ENTRANCE HALL

LOUNGE 19'5" x 9'8" approx (5.93m x 2.97m approx)

KITCHEN 9'10" x 6'4" approx (3.00m x 1.95m approx)

STAIRS TO UPPER LEVEL

BEDROOM 1

14'9" x 8'8" approx (4.50m x 2.66m approx)

BEDROOM 2

11'5" x 10'2" approx (3.50m x 3.11m approx)

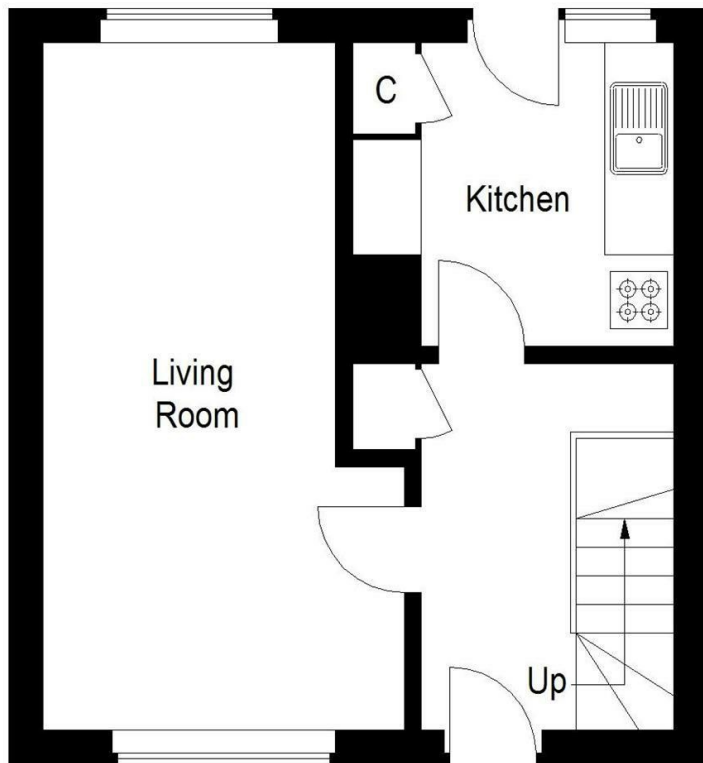
BATHROOM 6'4" x 5'6" approx (1.95m x 1.68m approx)

FRONT AND REAR GARDEN GROUNDS

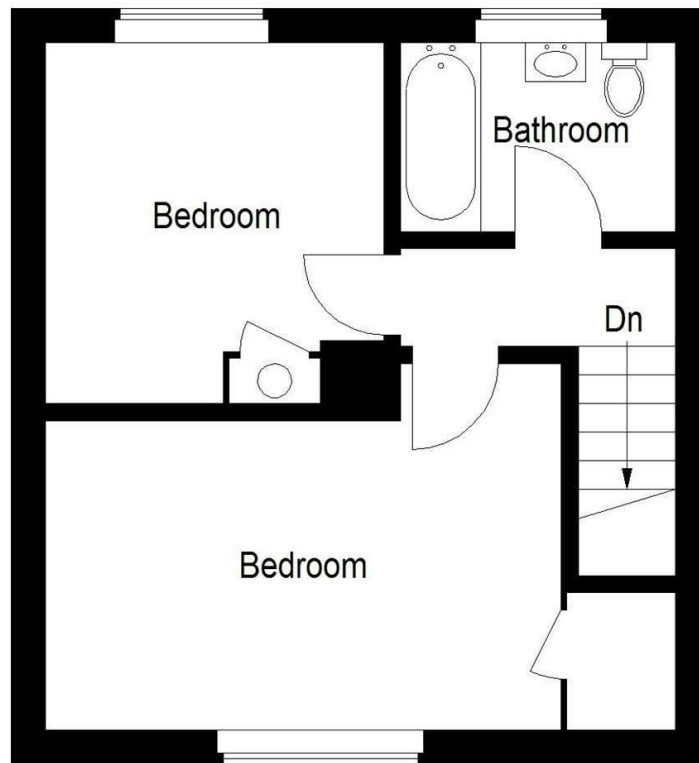
SINGLE GARAGE

1 CAR DRIVEWAY

INFORMATION



Ground Floor



First Floor

Information

These particulars are prepared on the basis of information provided by our clients. We have not tested the electrical system or any electrical appliances, nor where applicable, any central heating system. All sizes are recorded by electronic tape measurement to give an indicative, approximate size only. Prospective purchasers should make their own enquiries – no warranty is given or implied. This schedule is not intended to, and does not form any contract.

FREE Valuation

Selling Your Home?

Choose first for homes - a highly experienced estate agency team you can trust to sell your home at the highest possible price. Offering fantastic savings on selling fees, with no compromise on service, free professional photography highlighting your home in its best light, first for homes will be your first choice. Contact us today to arrange your appointment.



first for trust



first for service



first for aftercare

first for homes
 first for property in life - firstforhomes.co.uk

Contact Allan England's Team
01592 752 944

32 North Street, Glenrothes, Fife KY7 5NA
 Fax: 01592 807947
sales@firstforhomes.co.uk
www.firstforhomes.co.uk