



63 Shuna Place, Newton Mearns

www.nicolestateagents.co.uk



Nicol Estate Agents



Nicol Estate Agents

Situation

A hugely popular suburb, Newton Mearns is a welcoming, family friendly town, with a fantastic, lively and inclusive community. If you choose to live in Newton Mearns, you will have access to some of Scotland's highest attaining primary and secondary schools, including Crookfur Primary School, St Cadoc's Primary School, Eastwood High School and St. Ninian's High Schools. Newton Mearns is within easy reach of the private Belmont House School and a number of school-run pick-up points for private schools in Glasgow.

Commuter Links:

Newton Mearns is located approximately 9 miles from Glasgow City Centre. Commuter routes are served by the M77, M8 and Glasgow Orbital motorways which also provide 30 minute journey times to both Glasgow and Prestwick international airports. There are regular train and bus services to Glasgow, East Kilbride and the beautiful Ayrshire coast.

Local Amenities:

Recognised as providing amongst the highest standards of local amenities, Newton Mearns offers an array of healthcare centres, banks and libraries and a broad range of supermarkets, boutique shops and restaurants, including The Avenue Shopping Centre and The Greenlaw Retail Park includes Waitrose and Tesco Metro.

Fitness and Outdoors:

Local sports and recreational facilities include David Lloyd Rouken Glen, Parklands Country Club, Cathcart, Williamwood and Whitecraigs Golf Clubs, a number of private bowling clubs and Whitecraigs tennis club. East Renfrewshire Council's own excellent sports and leisure facilities at Eastwood Toll. If you are an outdoors lover, Rouken Glen Park, voted Best Park in the UK 2016, is nearby with walking trails through the woods, a great adventure play area, a skate park, five a side football pitches and a boating pond.









Description

A well presented detached villa, extremely well located for amenities within the surrounding district.

Internally the property provides flexible accommodation formed over two levels, well designed for family living. The accommodation comprises:

Ground Floor: Entrance vestibule with access to the family room/ further bedroom. Spacious and well presented sitting room with feature fireplace and staircase to upper accommodation. Dining room with access to the conservatory. Well appointed kitchen equipped with a full complement of floor and wall mounted cabinets and complementary worktops. The kitchen provides access to the utility area and to the side of the property.

First Floor: Bedroom one with fitted wardrobes and an ensuite shower room. Bedroom two. Bedroom three. House family bathroom with three piece suite.

The property is further complemented by gas central heating and double glazing. The landscaped garden grounds provide privacy and shelter. The driveway provides off street parking for two cars at the front of the property.



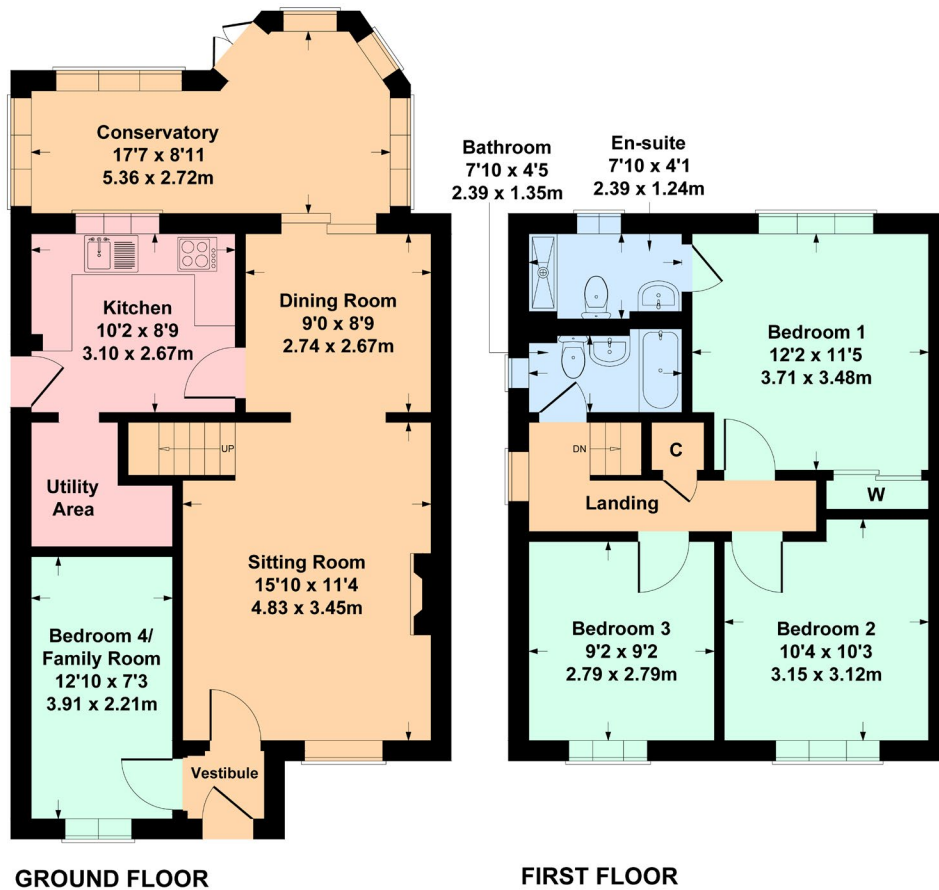


Nicol Estate Agents



63 Shuna Place, Newton Mearns, G77 6TN

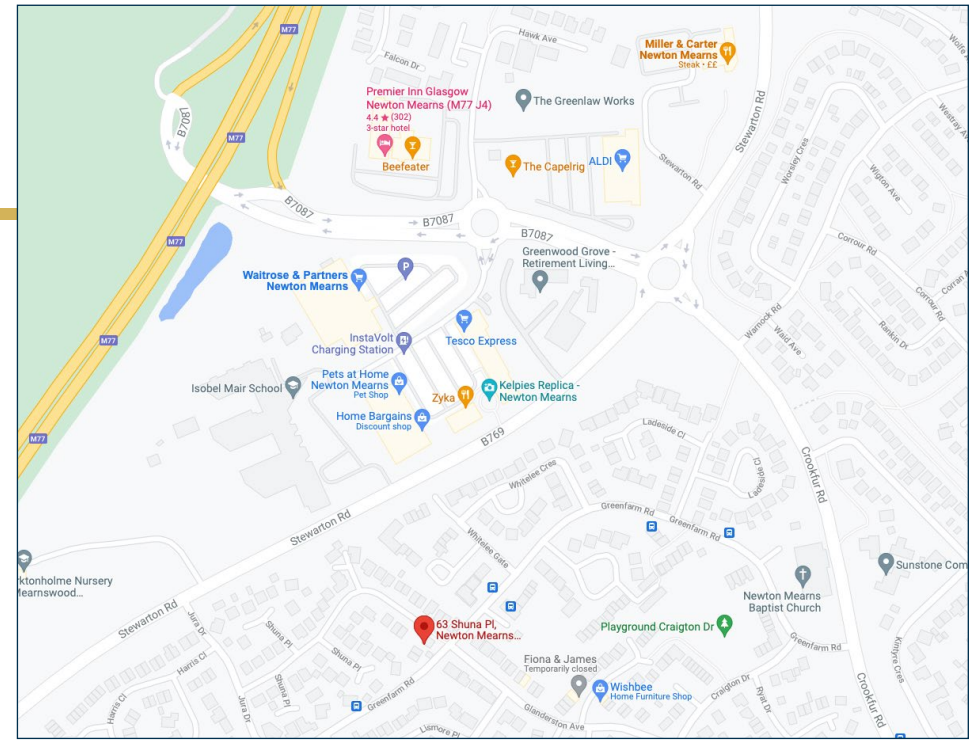
Approximate gross internal area 1157 sq ft - 107 sq m



SKETCH PLAN FOR ILLUSTRATIVE PURPOSES ONLY

All measurements, walls, doors, windows, fitting and appliances, their sizes and locations are approximate only. They cannot be regarded as being a representation by the seller, nor their agent. produced by Potterplans Ltd. 2021

We believe these details to be accurate however it is not guaranteed and they do not form any part of a contract. Fixtures and fittings are not included unless specified in the enclosed. Photographs are for general information and it must not be inferred that any item is included for sale with the property. All distances and measurements are approximate. Floorplans may not be to scale and are for illustration purposes only.



Viewing

By appointment through
Nicol Estate Agents
46 Ayr Road
Newton Mearns, Glasgow G46 6SA
Telephone 0141 616 3960
mail@nicolestateagents.co.uk

Outgoings

East Renfrewshire Council.
Band E

Fixtures and Fittings

Only items specifically mentioned in the sale particulars are included in the sale price.

Energy Efficiency Rating

Band C

Services

The property is supplied by mains water, gas and electricity. Gas central heating.

Local Authority

East Renfrewshire Council
Council headquarters
Eastwood Park
Rouken Glen Road
Giffnock
G46 6UG
Tel: (0141) 577 3000

Property Reference CLA340

46 Ayr Road, Newton Mearns, Glasgow G46 6SA

T: 0141 616 3960 F: 0141 258 2761 E: mail@nicolestateagents.co.uk

www.nicolestateagents.co.uk

