



98 Russell Street

, Wishaw, ML2 7AP

Offers over £69,000

UNEXPECTEDLY BACK ON THE MARKET!

A spacious ground floor apartment, central to all amenities and transport links.

The accommodation comprises entrance vestibule, reception hallway, large bright lounge, fitted kitchen, a generous double bedroom with fitted wardrobes and modern bathroom.

Further benefiting from double glazing, gas central heating, small private courtyard, parking and large communal rear garden.

EPC D.

Russell Street is situated central to Wishaw Town Centre with all its amenities, including all shopping, schooling, transport facilities, leisure and recreational facilities. For the commuter the train station is a short stroll away and the nearby M8 and M74 motorway networks allow for fast and easy access to Glasgow, Edinburgh and all points beyond.

Viewing

Please contact our Pomphreys Properties Ltd Office on 01698373365 if you wish to arrange a viewing appointment for this property or require further information.

- Ground floor apartment
- spacious lounge
- great sized double bedroom with fitted wardrobes
- private rear courtyard
- communal gardens
- parking to rear
- central to all amenities



1



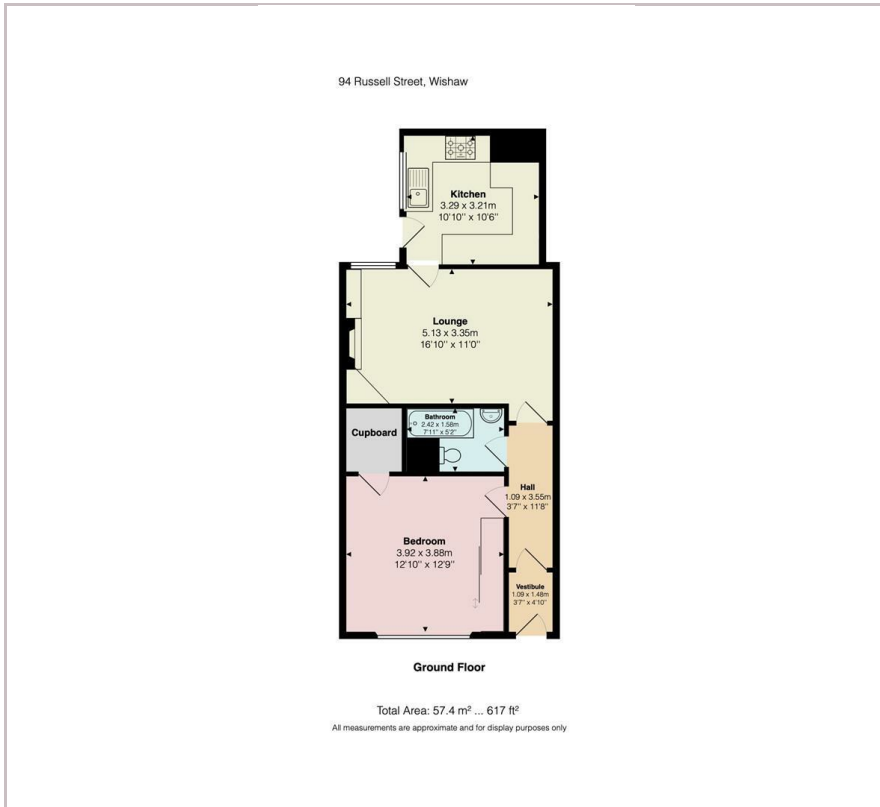
1



1



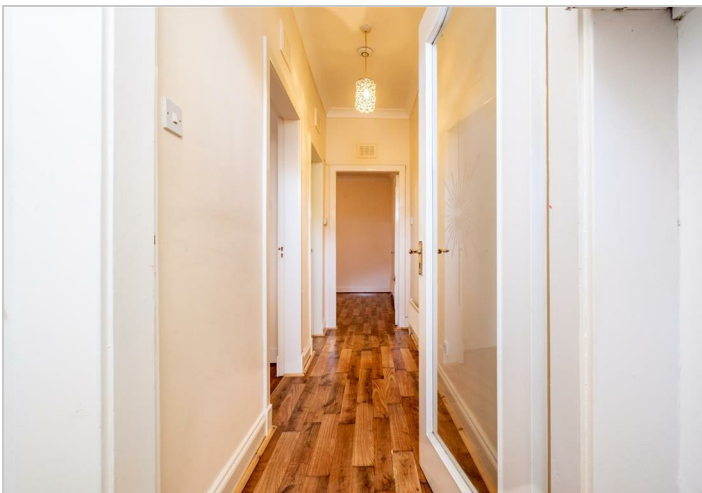
Floor Plan



Area Map



Energy Efficiency Graph



These particulars, whilst believed to be accurate are set out as a general outline only for guidance and do not constitute any part of an offer or contract. Intending purchasers should not rely on them as statements of representation of fact, but must satisfy themselves by inspection or otherwise as to their accuracy. No person in this firm's employment has the authority to make or give any representation or warranty in respect of the property.