



5 Brooklyn Place

, Wishaw, ML2 0RA

Fixed asking price £67,500

NEW FIXED PRICE!

A spacious and immaculate lower cottage flat situated within the extremely popular locale of Overtown Wishaw.

The accommodation comprises entrance hall, large lounge, fitted kitchen, two double bedrooms and bathroom.

Further benefits include double glazing, gas central heating and gardens to front and rear.

Overtown is set within a short drive of both Wishaw Town Centre with its many amenities and the scenic Clyde Valley. It is also ideally situated for commuting to Glasgow, Edinburgh and the central belt via both the M8 and the M74 motorway networks.

EPC D

Viewing

Please contact our Pomphreys Properties Ltd Office on 01698373365 if you wish to arrange a viewing appointment for this property or require further information.

- Fitted Kitchen
- lower flat in popular location
- 2 double bedrooms
- lovely large rear garden
- Double Glazing
- Gas Central Heating
- Front garden



2



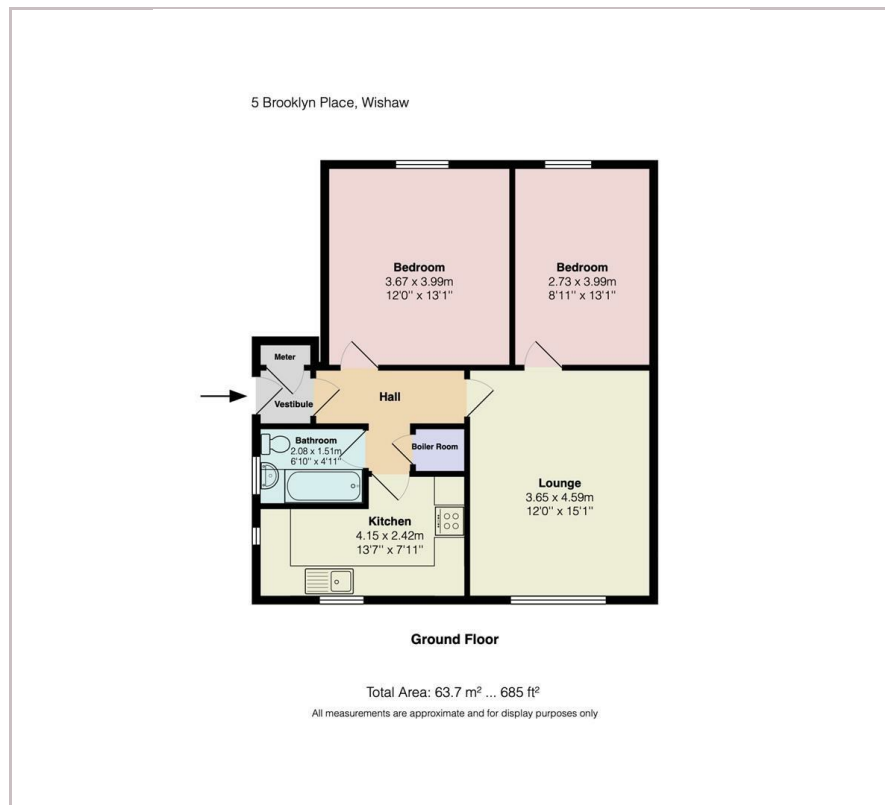
1



1



Floor Plan



Area Map



Energy Efficiency Graph



These particulars, whilst believed to be accurate are set out as a general outline only for guidance and do not constitute any part of an offer or contract. Intending purchasers should not rely on them as statements of representation of fact, but must satisfy themselves by inspection or otherwise as to their accuracy. No person in this firm's employment has the authority to make or give any representation or warranty in respect of the property.