

campbell
smith

3/8, 2f2 Milton Street,
Edinburgh,
EH8 8EZ



- Superb traditional second floor flat
- Move in condition
- View towards Calton Hill
- Entryphone
- Open plan sitting room/ kitchen with white goods included
- Utility cupboard
- Good sized double bedroom
- Lovely shower room
- Sanded floors
- Double glazing
- Shared garden

Offers Over : £170,000

espc / rightmove  / Zoopla /  /  / 

camsmith.co.uk



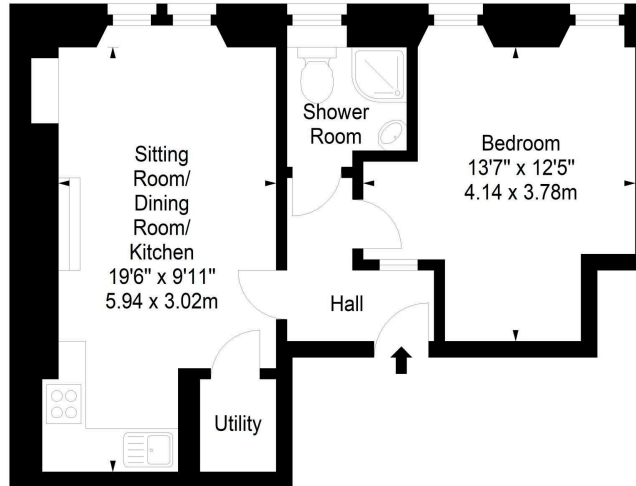
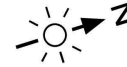




Milton Street,
Edinburgh,
Midlothian, EH8 8EZ



Approx. Gross Internal Area
435 Sq Ft - 40.41 Sq M
For identification only. Not to scale.
© SquareFoot 2023



Second Floor



21 York Place, Edinburgh, EH1 3EN
Tel: 0131 555 2999
Fax: 0131 555 5450
camsmith.co.uk

+ Extras
The kitchen white goods are included

Buses
London Rd - 4, 5, 26, 44, 45, 113, 124, N26, N107, N113, N124, X5, X6, X7, X26, X44

Shops
Abbeyhill, Meadowbank Retail Park

Schools
Abbeyhill PS, St Ninian's RC PS, Drummond Community HS, Holy Rood RC HS

Parking
Council resident's permit

Council Tax Band - B

EPC - D

Factor
None

Viewing
Telephone Campbell Smith on
0131 555 2999

DISCLAIMER
While our sales particulars are believed to be accurate and reliable, no guarantee is given as to their correctness or accuracy, if there is any point which is of particular importance to you, please contact the office and we will be pleased to check the information. The mention of any appliances and/or services in these details does not imply that these are in full and efficient working order. All measurements are taken using a sonic measuring tape and are therefore approximate sizes only.