

# first for homes

first for property in life - [firstforhomes.co.uk](https://www.firstforhomes.co.uk)

Contact Allan England's Team

01592 752 944



Tower Terrace, Kirkcaldy

**Offers over £114,995**

# Tower Terrace, Kirkcaldy

Beautifully Upgraded 2-Bed End-Terraced Villa With Outbuilding In Desirable Area of Kirkcaldy!

Allan England's award winning team at first for homes are proud to welcome to the market this lovely 2-bedroom End-Terraced Villa situated within a desirable area of Kirkcaldy. The property forms an ideal first-time purchase boasting move-in condition living accommodation comprising: entrance hall, open-plan lounge/diner, kitchen, 2 double bedrooms with storage space and family bathroom. Externally, there are garden grounds to the front and rear. There is space to the front for a driveway (subject to planning consents) and the rear offers a spacious outbuilding with power and lights. Early viewing is highly recommended to ensure you don't miss out!

HOME REPORT VALUE £120,000

EPC RATING D

COUNCIL TAX BAND B

Call first for homes - first for trust... first for service... first for aftercare!

The popular coastal Town of Kirkcaldy has a wide range of services including shopping, banking, schools and a host of recreational facilities such as the stunning Beveridge Park and the Adam Smith Theatre. For the commuter Kirkcaldy boasts a mainline train station and the A92 road link giving access to Edinburgh and all major local towns.

- 2-Bed End-Terraced Villa
- Beautifully Upgraded Throughout
- Gardens Front & Rear
- Space for Driveway (subject to planning consents)
- Spacious Outbuilding With Power & Lights
- Desirable Area of Kirkcaldy
- Early Viewing Advised
- HOME REPORT VALUE £120,000
- EPC RATING D
- COUNCIL TAX BAND B





**SITUATION - Kirkcaldy**

**ENTRANCE HALL**

**LOUNGE / DINER**

21'10" x 11'8" approx. (6.68m x 3.57m approx.)

**KITCHEN** 10'1" x 9'4" approx. (3.08m x 2.86m approx.)

**UPPER LEVEL**

**BEDROOM 1**

15'0" x 9'5" approx. (4.58m x 2.88m approx.)

**BEDROOM 2**

11'11" x 10'1" approx. (3.64m x 3.08m approx.)

**FAMILY BATHROOM**

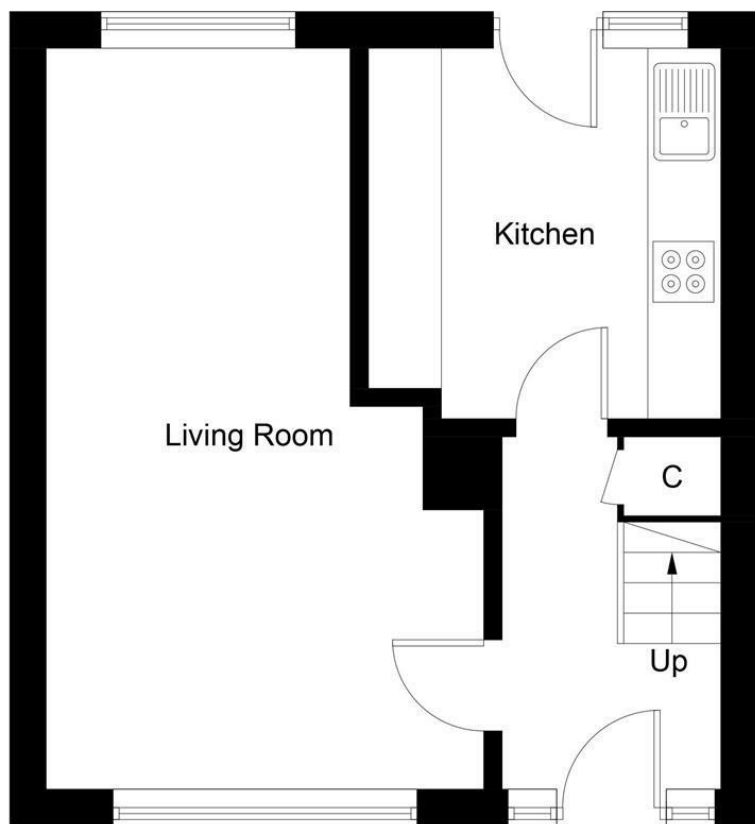
**GARDENS FRONT & REAR**

**SPACIOUS OUTBUILDING**

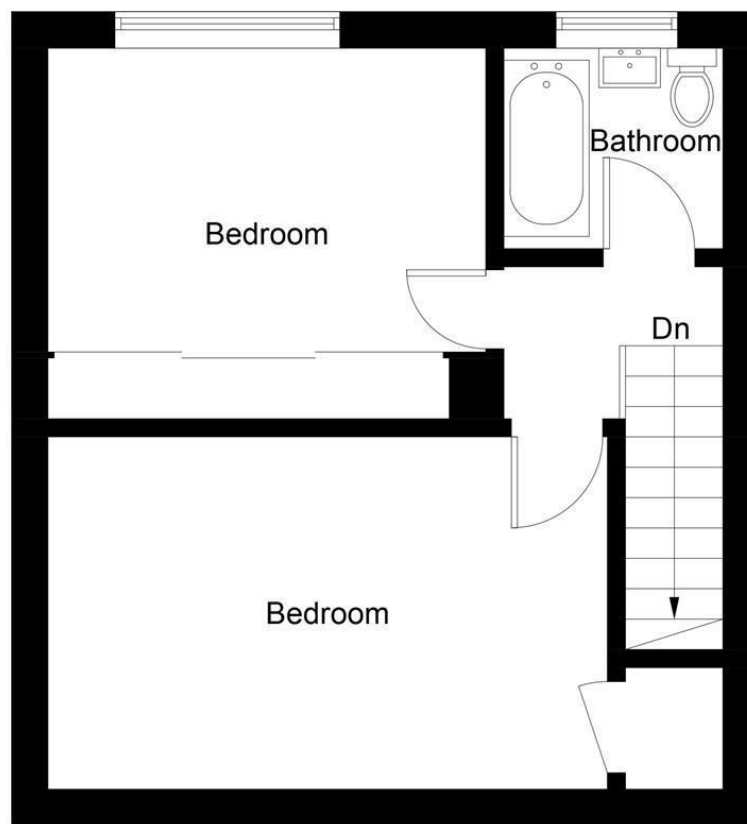
15'3" x 7'6" approx. (4.65m x 2.30m approx.)

**INFORMATION**





**Ground Floor**



**First Floor**

Illustration for identification purposes only, measurements are approximate, not to scale. floorplansUsketch.com © (ID?1059562)

## Information

These particulars are prepared on the basis of information provided by our clients. We have not tested the electrical system or any electrical appliances, nor where applicable, any central heating system. All sizes are recorded by electronic tape measurement to give an indicative, approximate size only. Prospective purchasers should make their own enquiries – no warranty is given or implied. This schedule is not intended to, and does not form any contract.

## FREE Valuation

### Selling Your Home?

Choose first for homes - a highly experienced estate agency team you can trust to sell your home at the highest possible price. Offering fantastic savings on selling fees, with no compromise on service, free professional photography highlighting your home in its best light, first for homes will be your first choice. Contact us today to arrange your appointment.



**first for trust**



**first for service**



**first for aftercare**

**first for homes**  
 first for property in life - firstforhomes.co.uk

Contact Allan England's Team  
**01592 752 944**

32 North Street, Glenrothes, Fife KY7 5NA  
 Fax: 01592 807947  
 sales@firstforhomes.co.uk  
 www.firstforhomes.co.uk