

first for homes

first for property in life - [firstforhomes.co.uk](https://www.firstforhomes.co.uk)

Contact Allan England's Team

01592 752 944



Kingston Road, Kirkcaldy

Offers over £199,995

Kingston Road, Kirkcaldy

Immaculately Presented 3 Bed Semi-Detached Villa With Garage & 2 Car Driveway Situated In A Sought After Area of Kirkcaldy, Fife! Move in Condition. Beautiful Home!

Allan England's Award-Winning Team at first for homes are proud to welcome to the market this Stunning 3 Bedroom Semi-Detached Family Villa With Garage and 2 Car Driveway in sought after Kirkcaldy, Fife!

This move in condition home offers bright & spacious living space for all the family with front porch, spacious lounge, beautiful open plan modern kitchen/diner and WC/cloaks. The upper level boasts master bedroom with double fitted wardrobes leading to modern en-suite, 2 further bedrooms another of which benefits from double fitted wardrobes and family bathroom. Property benefitted from a new combi boiler in 2019.

Externally there are easily maintained garden grounds with a lovely decking area for outside dining. Single garage & driveway for 2 cars.

Early viewing is advised to fully appreciate all this stunning home has to offer. Don't miss out!

Home Report Value- £210,000

EPC Rating- B

Council Tax Band- D

Call first for homes - First for trust... first for service... first for aftercare.

The popular coastal Town of Kirkcaldy has a wide range of services including shopping, banking, schools and a host of recreational facilities such as the stunning Beveridge Park and the Adam Smith Theatre. For the commuter Kirkcaldy boasts a mainline train station and the A92 road link giving access to Edinburgh and Glasgow.

Immaculately Presented 3 Bed Semi Detached Family Villa

- Single Garage & 2 Car Driveway
- Sought After Area In Kirkcaldy
- Family Bathroom, Master En-Suite & WC
- New Boiler in 2019
- Modern Open Plan Kitchen/Diner
- Front & Rear Garden Grounds
- EPC Rating- B
- Council Tax Band- D
- Home Report Value- £210,000





SITUATION - Kirkcaldy

FRONT PORCH

LOUNGE

12'11" x 12'1" (approx) (3.94m x 3.70m (approx))

OPEN PLAN KITCHEN/DINER

16'5" x 8'8" (approx) (5.02m x 2.65m (approx))

WC/CLOAKS

STAIRS TO UPPER LEVEL

BEDROOM 1

10'4" x 10'1" (approx) (3.16m x 3.08m (approx))

EN-SUITE

BEDROOM 2

9'6" x 8'7" (approx) (2.90m x 2.62m (approx))

BEDROOM 3

12'3" x 6'8" (approx measured at widest point) (3.74m x 2.05m (approx measured at widest point))

FAMILY BATHROOM

SINGLE GARAGE

2 CAR DRIVEWAY

FRONT & REAR GARDENS

INFORMATION



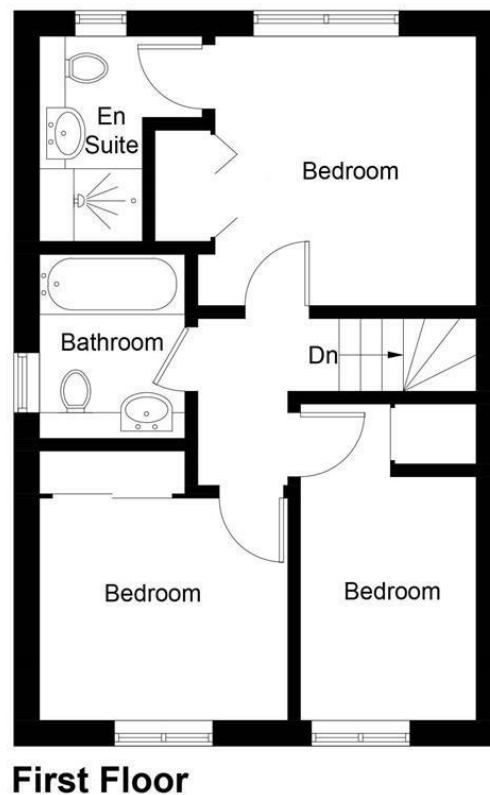
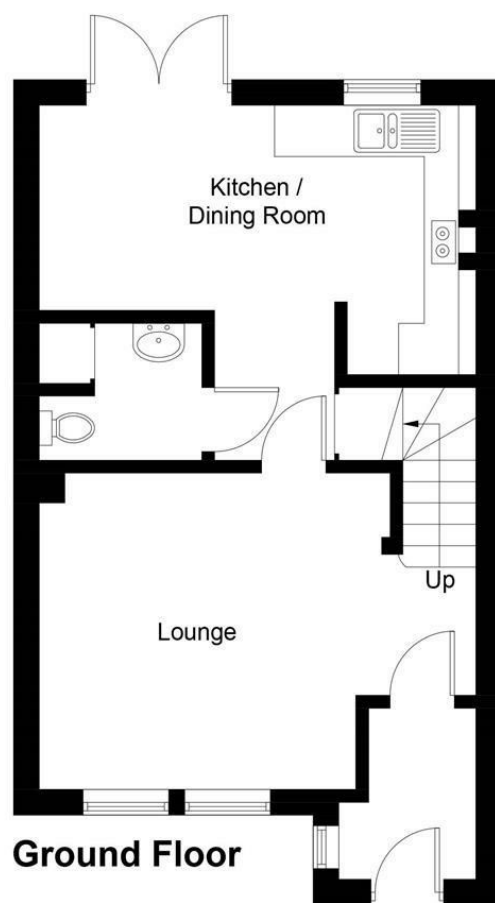


Illustration for identification purposes only, measurements are approximate, not to scale. floorplansUsketch.com © (ID1060935)

Information

These particulars are prepared on the basis of information provided by our clients. We have not tested the electrical system or any electrical appliances, nor where applicable, any central heating system. All sizes are recorded by electronic tape measurement to give an indicative, approximate size only. Prospective purchasers should make their own enquiries – no warranty is given or implied. This schedule is not intended to, and does not form any contract.

FREE Valuation

Selling Your Home?

Choose first for homes - a highly experienced estate agency team you can trust to sell your home at the highest possible price. Offering fantastic savings on selling fees, with no compromise on service, free professional photography highlighting your home in its best light, first for homes will be your first choice. Contact us today to arrange your appointment.



first for trust



first for service



first for aftercare

first for homes
first for property in life - firstforhomes.co.uk

Contact Allan England's Team
01592 752 944

32 North Street, Glenrothes, Fife KY7 5NA
Fax: 01592 807947
sales@firstforhomes.co.uk
www.firstforhomes.co.uk