

first for homes

first for property in life - [firstforhomes.co.uk](https://www.firstforhomes.co.uk)

Contact Allan England's Team
01592 752 944



Lochty Drive, Lochgelly

Offers over £159,995

Lochty Drive, Lochgelly

Beautifully Presented 3-Bedroom End-Terraced Villa With 2 Allocated Parking Bays In The Desired Village Of Kinglassie, Fife!

Allan England's Team at First For Homes are proud to welcome to the market this lovely 3-bedroom End-Terraced Family Home situated within the Village of Kinglassie, Fife! The property boasts bright and spacious living accommodation throughout comprising of: lounge, kitchen/diner, cloakroom W/C, stairs to the upper level, master bedroom with en-suite shower room and double fitted wardrobes, 2 further bedrooms and family bathroom. Externally, it boasts beautiful sunny garden grounds to the rear and has 2 allocated parking bays. Viewings are highly recommended to fully appreciate what this gorgeous family home has to offer! Don't miss out!

Home Report Value £170,000
EPC Rating C
Council Tax Band D

Call first for homes - first for trust... first for service... first for aftercare

Kinglassie is a popular residential area with a wealth of amenities including local shopping and primary school whilst only being a few miles from Kirkcaldy and Glenrothes which boast the level of services you would expect from larger towns. For the commuter the A92 is close by allowing easy access to Edinburgh and all major local towns.

- Beautifully Presented 3-Bedroom End-Terraced Villa
- Situated In The Desired Village Of Kinglassie, Fife.
- 2 Allocated Car Parking Bays
- Master Bedroom With En-Suite Shower Room
- 2 Further Double Bedrooms
- Lovely Open Plan Kitchen & Family Dining Space
- HOME REPORT - £170,000
- EPC - C
- COUNCIL TAX - D





SITUATION - Kinglassie

ENTRANCE HALLWAY

LOUNGE

18'2" x 10'10" (approx) (5.54 x 3.324m (approx))

KITCHEN/DINER

18'2" x 8'6" (approx) (5.54 x 2.60m (approx))

CLOAKROOM W/C

STAIRS TO UPPER LEVEL

BEDROOM 1

12'5" x 10'9" (approx) (3.79 x 3.28m (approx))

EN-SUITE

BEDROOM 2

10'3" x 8'7" (approx) (3.14 x 2.64m (approx))

BEDROOM 3

8'7" x 7'10" (approx) (2.64 x 2.40m (approx))

FAMILY BATHROOM

REAR GARDEN GROUNDS

2 PARKING SPACES TO FRONT

INFORMATION

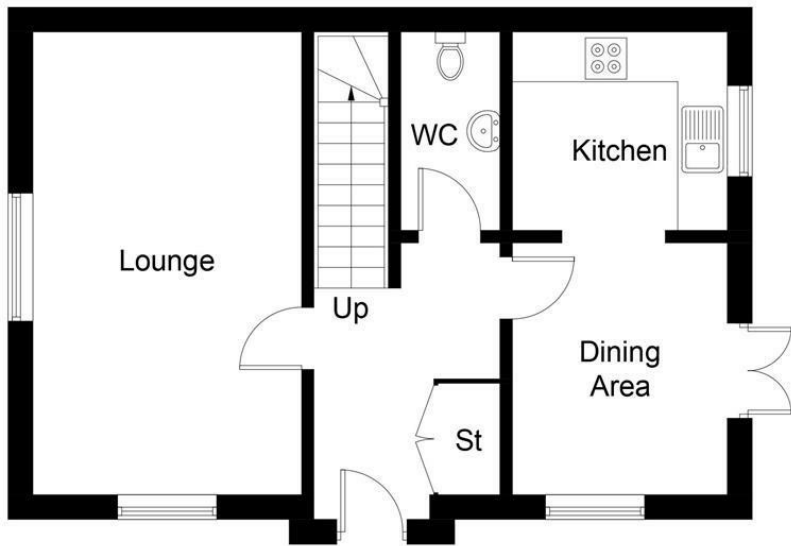
Information

These particulars are prepared on the basis of information provided by our clients. We have not tested the electrical system or any electrical appliances, nor where applicable, any central heating system. All sizes are recorded by electronic tape measurement to give an indicative, approximate size only. Prospective purchasers should make their own enquiries – no warranty is given or implied. This schedule is not intended to, and does not form any contract.

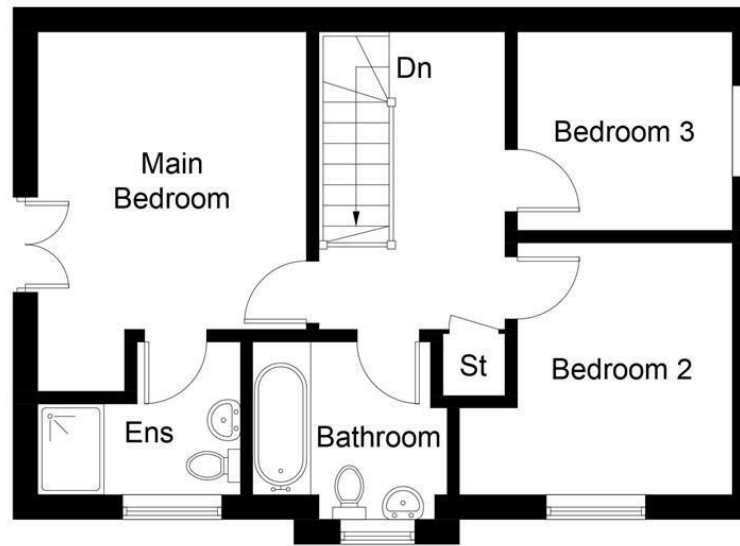
FREE Valuation

Selling Your Home?

Choose first for homes - a highly experienced estate agency team you can trust to sell your home at the highest possible price. Offering fantastic savings on selling fees, with no compromise on service, free professional photography highlighting your home in its best light, first for homes will be your first choice. Contact us today to arrange your appointment.



Ground Floor



First Floor

Illustration for identification purposes only, measurements are approximate, not to scale. floorplansUsketch.com © (ID1066625)

first for homes
first for property in life - firstforhomes.co.uk

Contact Allan England's Team
01592 752 944

 **first for trust**
 **first for service**
 **first for aftercare**

32 North Street, Glenrothes, Fife KY7 5NA
Fax: 01592 807947
sales@firstforhomes.co.uk
www.firstforhomes.co.uk