

first for homes

first for property in life - [firstforhomes.co.uk](https://www.firstforhomes.co.uk)

Contact Allan England's Team

01592 752 944



Alburne Crescent, Markinch, Glenrothes
Offers over £299,995

Alburne Crescent, Markinch, Glenrothes

Lovely Presented Spacious 5-Bedroom Detached Family Home With Large South Facing Garden Grounds, Double Garage, Car Port And 4 Car Driveway. In A Highly Desirable Area Of Markinch, Glenrothes!

Allan England's multi-award winning team at first for homes are proud to present to the market this beautifully presented Detached Villa. The property is situated within the highly sought-after area of Markinch, Glenrothes and comprises: entrance vestibule, spacious lounge with feature log burning stove leading into a beautiful dining room with full length windows overlooking the rear South facing garden grounds, lovely kitchen, utility room which has access to the double garage, bedroom/study with built in storage cupboards and cloakroom W/C. The upper level boasts: master bedroom with built in double wardrobes and en-suite shower room, three further bedrooms and family bathroom. Externally the property has a double garage with electric doors, there is also a large external store at the rear of the garage in addition to a further smaller garden store, driveway and car port to the side, space for approx 4 cars, and extensive, beautifully maintained South facing rear garden grounds. Viewing is highly recommended to fully appreciate all this impressive, beautiful family home has to offer. Don't miss out!

Home Report Value £315,000
EPC Rating D
Council Tax Band F

Call first for homes - first for trust... first for service... first for aftercare.

- Spacious 5 Bed Detached Family Home!
- Sought After Area of Glenrothes on the Outskirts of Markinch!
- Extensive South Facing Rear Garden Grounds
- Kitchen, Dining Room, Utility and Store
- Beautifully Presented Throughout
- Double Garage, Car Port & 4 Car Driveway
- Family Bathroom, En-Suite & Cloakroom W/C
- Home Report Value £315,000
- EPC Rating D
- Council Tax Band F





SITUATION – Glenrothes

ENTRANCE VESTIBULE

ENTRANCE HALLWAY

LOUNGE 21'7" x 11'11" (approx) (6.58 x 3.64m (approx))

DINING ROOM

12'10" x 6'9" (approx) (3.92 x 2.08m (approx))

KITCHEN 15'5" x 9'10" (approx) (4.70 x 3.00m (approx))

UTILITY ROOM

9'10" x 5'10" (approx) (3.02 x 1.80m (approx))

ACCESS TO DOUBLE GARAGE

19'1" x 17'11" (approx) (5.83 x 5.48m (approx))

BEDROOM 5 11'2" x 6'4" (approx) (3.41 x 1.94m (approx))

W/C CLOAKS

STAIRS TO UPPER LEVEL

BEDROOM 1

14'11" x 11'6" (approx) (4.56 x 3.51m (approx))

EN-SUITE

BEDROOM 2 12'7" x 11'4" (approx) (3.85 x 3.46m (approx))

BEDROOM 3 11'5" x 9'11" (approx) (3.50 x 3.04m (approx))

BEDROOM 4 11'10" x 4'4" (approx) (3.62 x 1.33m (approx))

FAMILY BATHROOM

9'10" x 5'5" (approx) (3.02 x 1.66m (approx))

EXTENSIVE REAR GARDEN GROUNDS

CAR PORT TO SIDE

4 CAR DRIVEWAY

DOUBLE GARAGE

LARGE STORE

SMALLER GARDEN STORE

INFORMATION

Information

These particulars are prepared on the basis of information provided by our clients. We have not tested the electrical system or any electrical appliances, nor where applicable, any central heating system. All sizes are recorded by electronic tape measurement to give an indicative, approximate size only. Prospective purchasers should make their own enquiries – no warranty is given or implied. This schedule is not intended to, and does not form any contract.

FREE Valuation

Selling Your Home?

Choose first for homes - a highly experienced estate agency team you can trust to sell your home at the highest possible price. Offering fantastic savings on selling fees, with no compromise on service, free professional photography highlighting your home in its best light, first for homes will be your first choice. Contact us today to arrange your appointment.

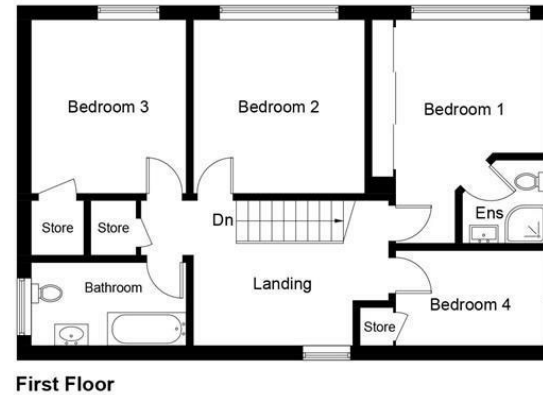
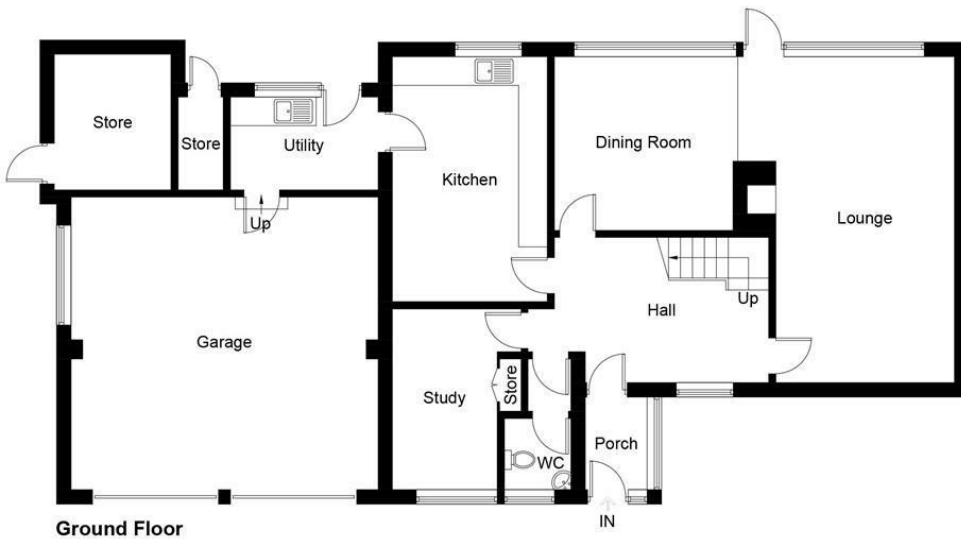


Illustration for identification purposes only, measurements are approximate, not to scale. floorplansUsketch.com © (ID1066047)

first for homes
first for property in life - firstforhomes.co.uk

Contact Allan England's Team
01592 752 944

32 North Street, Glenrothes, Fife KY7 5NA
Fax: 01592 807947
sales@firstforhomes.co.uk
www.firstforhomes.co.uk



first for trust



first for service



first for aftercare