

first for homes

first for property in life - [firstforhomes.co.uk](https://www.firstforhomes.co.uk)

Contact Allan England's Team

01592 752 944



Tyrie Crescent, Glenrothes
Offers over £114,995

Tyrie Crescent, Glenrothes

Beautifully Presented 2-Bed Mid Terraced Villa With 1 Car Driveway! Situated In A Quiet Cul-De-Sac Setting In The Sought After Area Of Woodside, Glenrothes!

Allan England's Award-Winning Team at first for homes are proud to welcome to the market this beautifully presented 2-bedroom Mid-Terraced Villa situated in a quiet cul-de-sac setting within the highly sought after area of Woodside, Glenrothes. The property has been tastefully decorated throughout and comprises on the ground level: spacious open plan lounge/diner with feature log burning stove, patio doors leading to the rear garden grounds and lovely upgraded kitchen with integrated appliances. The upper level boasts 2 double bedrooms with built in storage, family bathroom and an attic which has been floored and is currently used as an extra bedroom. Externally the property benefits from easily maintained front and rear garden grounds with a large timber outbuilding and decking area for those sunny days and a single car driveway. Early viewing is highly recommended to ensure you don't miss out.

Home Report Value £120,000

EPC Rating C

Council Tax Band B

Call first for homes - First for trust... first for service... first for aftercare.

- 2 Bed Mid Terraced Villa
- Quiet Cul-De-Sac Setting
- Sought After Area Of Woodside, Glenrothes
- Move In Condition
- 2 Double Bedrooms with Storage
- Attic Room
- Single Car Driveway
- Home Report Value £120,000
- EPC Rating C
- Council Tax Band B





SITUATION – Glenrothes

ENTRANCE HALLWAY

OPEN PLAN LOUNGE/DINER

21'5" x 9'7" (approx) (6.54 x 2.94m (approx))

KITCHEN 9'7" x 8'0" (approx) (2.94 x 2.46m (approx))

STAIRS TO UPPER LEVEL

BEDROOM 1

14'0" x 9'2" (approx) (4.28 x 2.80m (approx))

BEDROOM 2

11'6" x 10'0" (approx) (3.51 x 3.06m (approx))

FAMILY BATHROOM

6'6" x 5'5" (approx) (2.00 x 1.66m (approx))

ATTIC ROOM

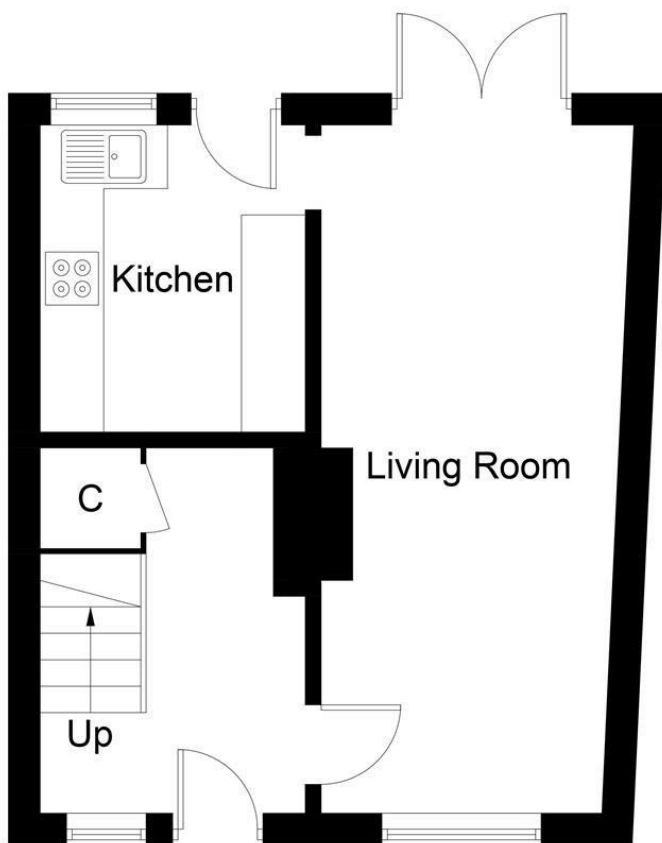
18'8" x 9'1" (approx) (5.70 x 2.78m (approx))

FRONT GARDEN GROUNDS

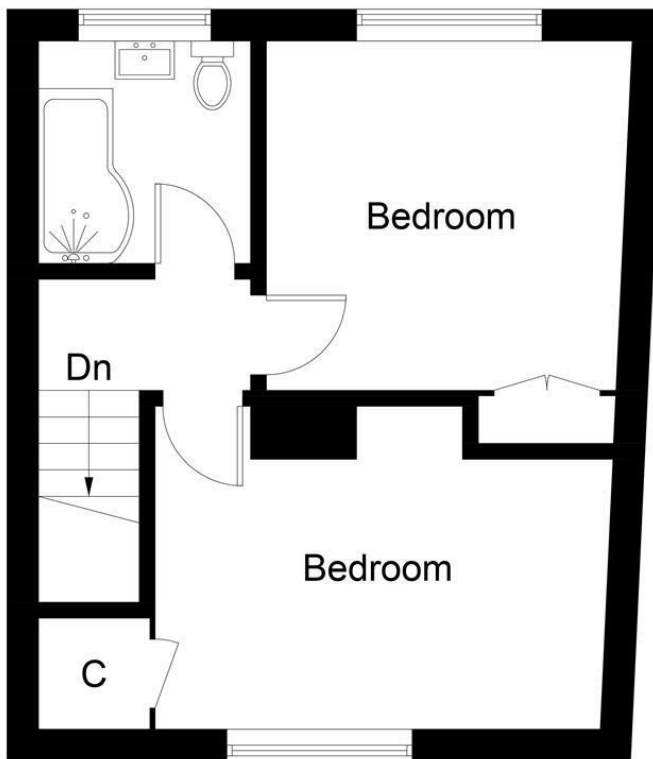
REAR GARDEN GROUNDS

DRIVEWAY FOR 1 CAR

INFORMATION



Ground Floor



First Floor

Illustration for identification purposes only, measurements are approximate, not to scale. floorplansUsketch.com © (ID1069436)

Information

These particulars are prepared on the basis of information provided by our clients. We have not tested the electrical system or any electrical appliances, nor where applicable, any central heating system. All sizes are recorded by electronic tape measurement to give an indicative, approximate size only. Prospective purchasers should make their own enquiries – no warranty is given or implied. This schedule is not intended to, and does not form any contract.

FREE Valuation

Selling Your Home?

Choose first for homes - a highly experienced estate agency team you can trust to sell your home at the highest possible price. Offering fantastic savings on selling fees, with no compromise on service, free professional photography highlighting your home in its best light, first for homes will be your first choice. Contact us today to arrange your appointment.



first for trust



first for service



first for aftercare

first for homes

first for property in life - firstforhomes.co.uk

Contact Allan England's Team

01592 752 944

32 North Street, Glenrothes, Fife KY7 5NA

Fax: 01592 807947

sales@firstforhomes.co.uk

www.firstforhomes.co.uk