

first for homes

first for property in life - [firstforhomes.co.uk](https://www.firstforhomes.co.uk)

Contact Allan England's Team

01592 752 944



Portland Gardens, Kirkcaldy

Offers over £154,995

Portland Gardens, Kirkcaldy

Stunning 2-Bed Semi-Detached Villa Situated Within A desirable Area Of Kirkcaldy!

Allan England's award winning team at First for Homes are proud to welcome to the market this beautifully presented 2-Bed semi-detached Villa situated within a lovely area of Kirkcaldy, Fife. The property forms an ideal first time purchase offering move in condition living accommodation comprising: entrance hall, lounge, kitchen/diner with patio doors to rear garden, 2 bedrooms and family bathroom. Externally, there boasts a mono-block driveway for 3-4 cars and a single garage with up-and-over door. Early viewing is highly recommended to ensure you don't miss out!

HOME REPORT VALUE £165,000
EPC RATING C
COUNCIL TAX BAND C

Call first for homes - first for trust... first for service... first for aftercare!

The popular coastal Town of Kirkcaldy has a wide range of services including shopping, banking, schools and a host of recreational facilities such as the stunning Beveridge Park and the Adam Smith Theatre. For the commuter Kirkcaldy boasts a mainline train station and the A92 road link giving access to Edinburgh and all major local towns.

- Beautifully Presented Throughout
- Desirable Area Of Kirkcaldy, Fife!
- 3-4 Car Driveway & Single Garage
- Kitchen Diner With Patio Doors
- Garden Grounds
- Early Viewing Advised
- Fantastic First-Time Purchase
- HOME REPORT VALUE £165,000
- EPC RATING C
- COUNCIL TAX BAND C





SITUATION - Kirkcaldy

ENTRANCE HALL

LOUNGE 14'7" x 10'1" approx (4.47m x 3.08m approx)

OPEN PLAN KITCHEN / DINER
16'1" x 7'9" approx (4.92m x 2.38m approx)

STAIRS TO THE UPPER LEVEL

BEDROOM 1
12'7" x 11'3" approx (3.86m x 3.44m approx)

BEDROOM 2
11'2" x 9'3" approx (3.41m x 2.82m approx)

BATHROOM

SINGLE GARAGE

4 CAR MONOBLOCK DRIVEWAY

GARDEN GROUNDS

INFORMATION

Information

These particulars are prepared on the basis of information provided by our clients. We have not tested the electrical system or any electrical appliances, nor where applicable, any central heating system. All sizes are recorded by electronic tape measurement to give an indicative, approximate size only. Prospective purchasers should make their own enquiries – no warranty is given or implied. This schedule is not intended to, and does not form any contract.

FREE Valuation

Selling Your Home?

Choose first for homes - a highly experienced estate agency team you can trust to sell your home at the highest possible price. Offering fantastic savings on selling fees, with no compromise on service, free professional photography highlighting your home in its best light, first for homes will be your first choice. Contact us today to arrange your appointment.



first for trust



first for service



first for aftercare

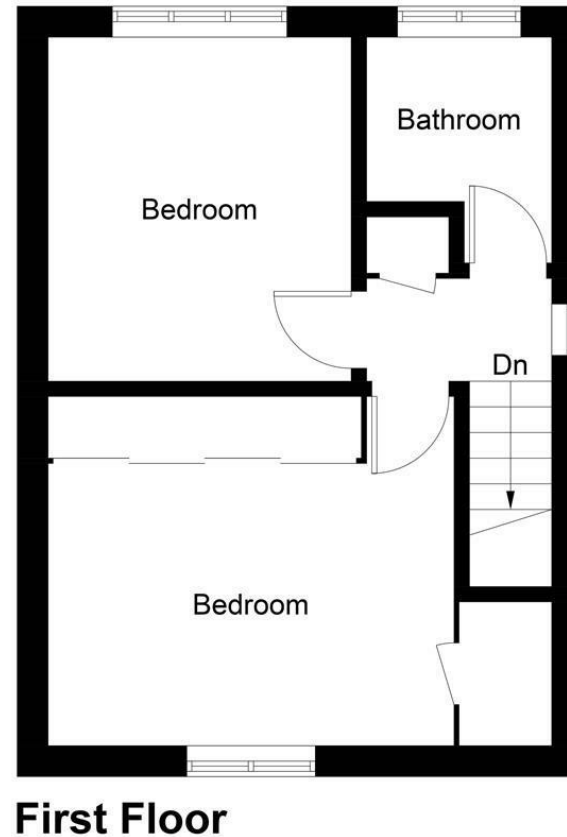
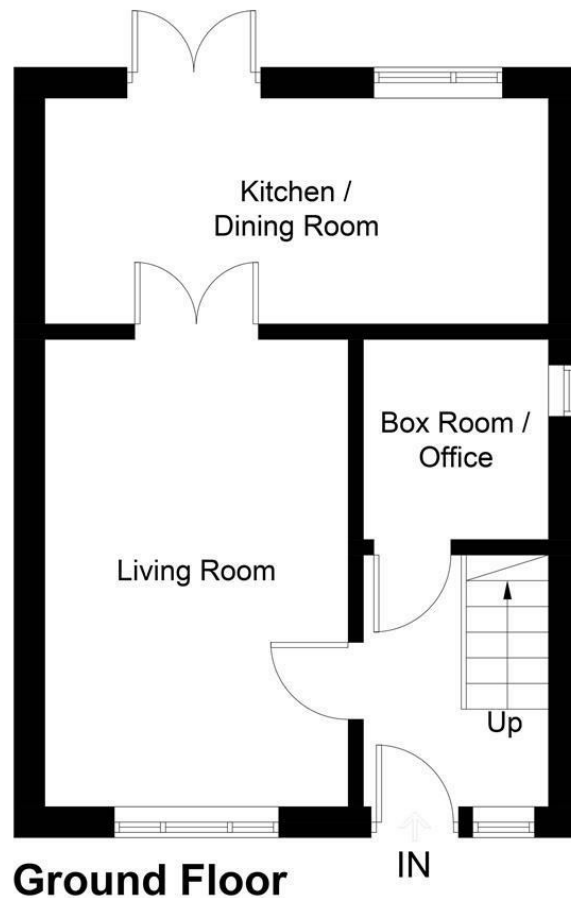


Illustration for identification purposes only, measurements are approximate, not to scale. floorplansUsketch.com © (ID1069463)

first for homes
first for property in life - firstforhomes.co.uk

Contact Allan England's Team
01592 752 944

32 North Street, Glenrothes, Fife KY7 5NA
Fax: 01592 807947
sales@firstforhomes.co.uk
www.firstforhomes.co.uk