

1 Greystones Cottage

ALICHMORE LANE, CRIEFF, PH7 4HB



*BEAUTIFULLY PRESENTED TWO
BEDROOM COTTAGE*



01738 500 655



www.mcewanfraserlegal.co.uk



info@mcewanfraserlegal.co.uk



McEwan Fraser Legal is delighted to offer a potential part exchange for this wonderful cottage. Introducing a charming and character-filled two-bedroom cottage, a delightful gem nestled in a picturesque setting. This meticulously maintained property is a true testament to timeless elegance and offers a warm and inviting atmosphere that instantly feels like home.

As you step inside, you're greeted by the ground floor, where two generously sized bedrooms and a well-appointed bathroom await. Each room offers ample space to accommodate your lifestyle needs while maintaining a cosy ambiance.

Ascending to the upper floor, you'll discover the heart of the home, an open-plan lounge and kitchen area that seamlessly blends style and functionality. The lounge area offers a perfect space for relaxation or entertaining guests, while the adjoining kitchen is thoughtfully designed with modern conveniences and plenty of storage space.







Bedroom 1

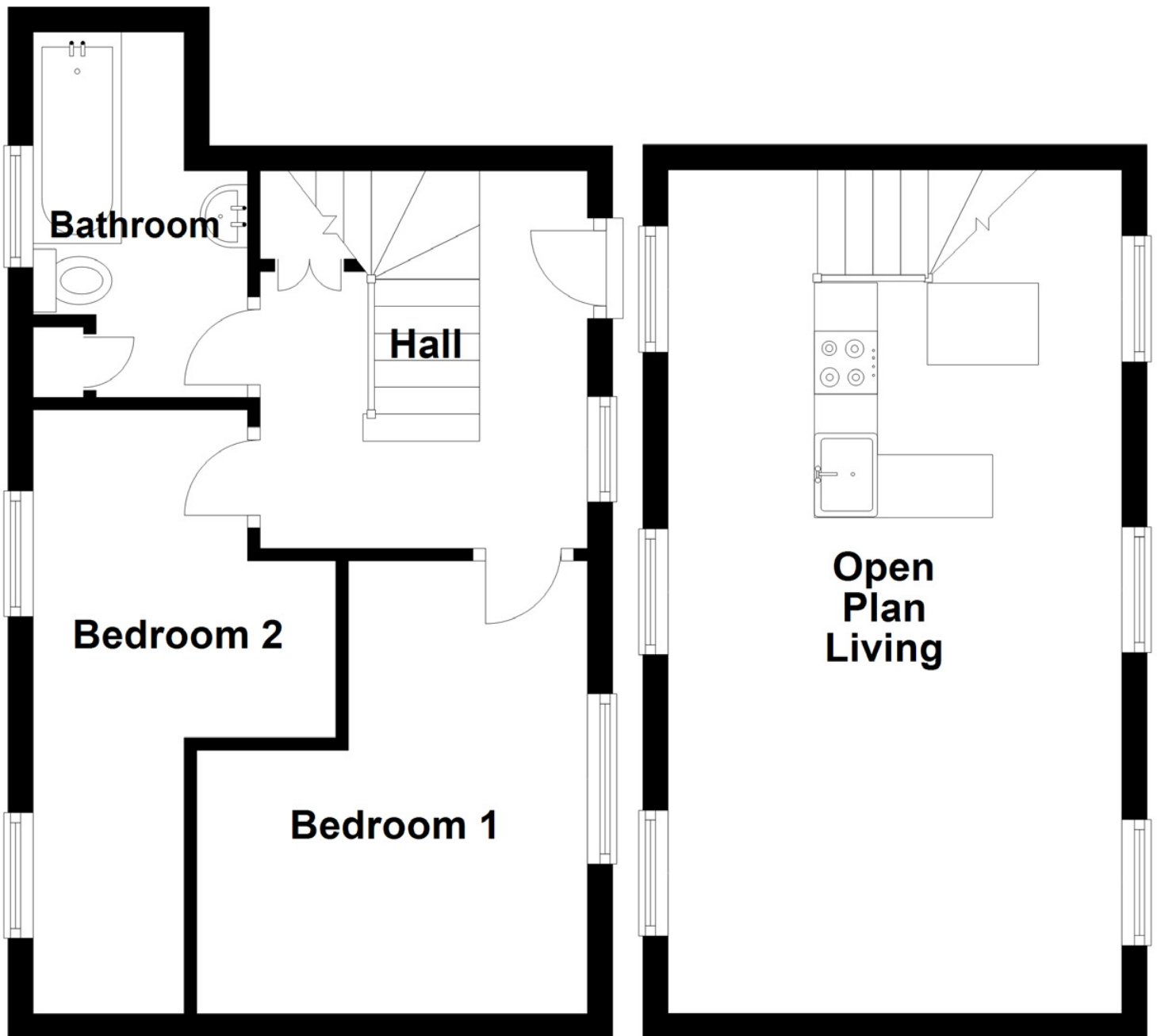




Bedroom 2







Approximate Dimensions

(Taken from the widest point)

Open Plan Living	6.70m (22') x 3.60m (11'10")
Bedroom 1	3.60m (11'10") x 3.10m (10'2")
Bedroom 2	4.80m (15'9") x 2.40m (7'11")
Bathroom	2.90m (9'6") x 1.70m (5'7")

Gross internal floor area (m²): 58m²

EPC Rating: C



Although this cottage boasts heaps of character, it also offers modern comforts, including a private parking space for added convenience. While there may not be garden ground, the surrounding scenery provides a picturesque backdrop that can be enjoyed from the comfort of your own home. With its spacious layout and meticulous upkeep, this cottage is truly a turnkey property, ready for you to move in and make it your own. Whether you're looking for a cosy retreat or a charming abode to call your own, this cottage is sure to exceed your expectations.

Don't miss out on the opportunity to own this enchanting home, schedule a viewing today and experience the warmth and character that awaits within.

The Property



Welcome to Crieff, a picturesque town nestled amidst the rolling hills of Perthshire, Scotland, where historic charm meets modern convenience in perfect harmony.

Located in the heart of Scotland, Crieff is renowned for its stunning natural beauty, with the rugged peaks of the Highlands serving as a majestic backdrop. From the moment you arrive, you'll be captivated by the town's scenic beauty, from lush green landscapes to cascading waterfalls and meandering rivers.

But Crieff is more than just a pretty face – it's a vibrant community brimming with history, culture, and a warm Scottish welcome. Take a stroll through the town center and you'll discover a treasure trove of charming shops, cafes, and galleries, offering a delightful blend of local craftsmanship and contemporary flair.

The Location

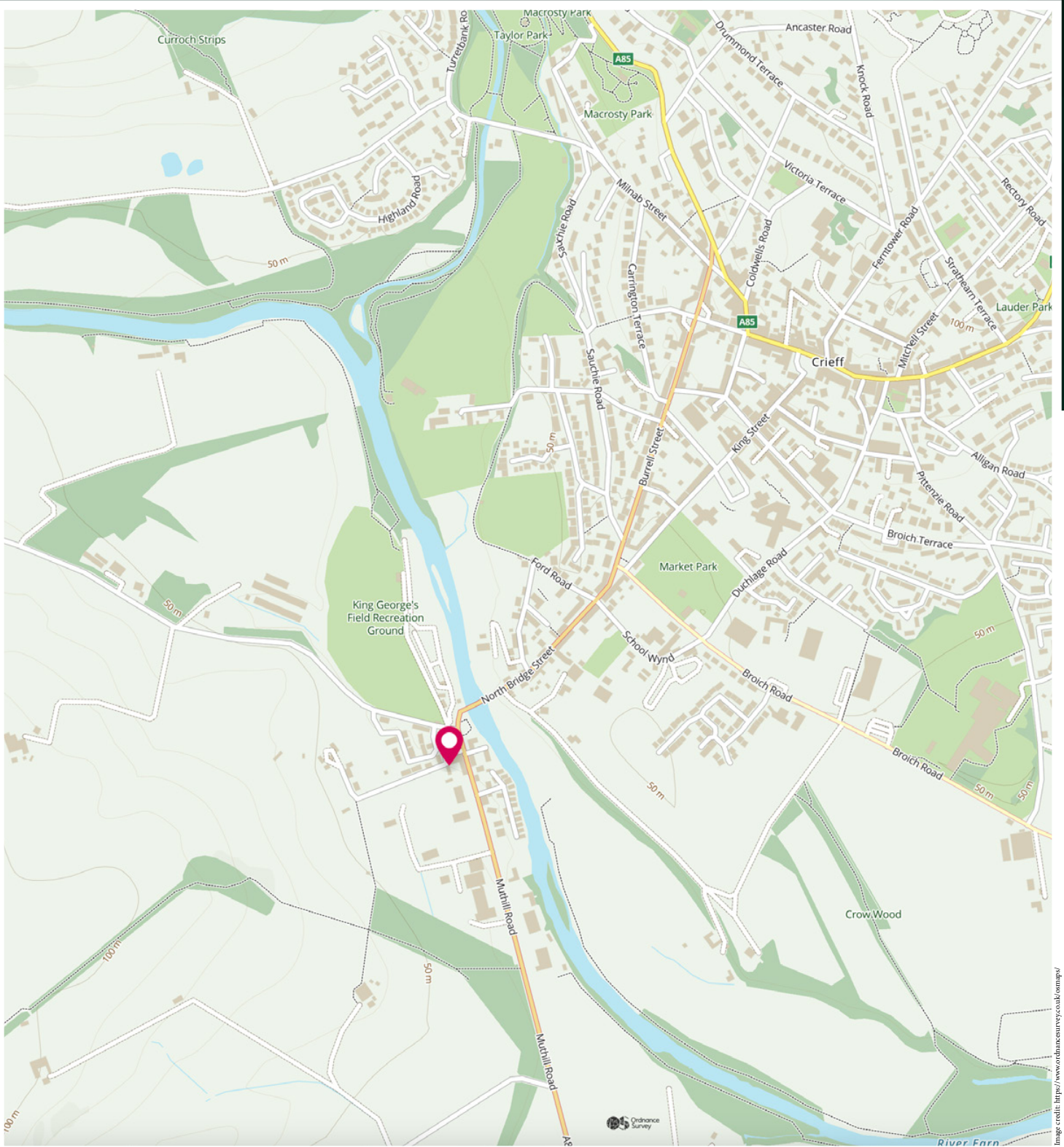


History buffs will delight in Crieff's rich heritage, with landmarks such as Drummond Castle Gardens, Crieff Hydro, and the famous Crieff Visitor Centre offering fascinating insights into the town's past. Meanwhile, outdoor enthusiasts will find endless opportunities for adventure, from hiking and cycling in the surrounding hills to fishing and golfing on world-class courses.

Crieff is also a culinary destination in its own right, with a thriving food and drink scene that celebrates the best of Scottish produce. Whether you're craving traditional Scottish fare or international cuisine, you'll find plenty of options to satisfy your palate.

With its scenic beauty, rich history, and vibrant community spirit, Crieff invites you to experience the best of Scotland in one charming town. Whether you're seeking relaxation, adventure, or simply a warm Scottish welcome, Crieff promises an unforgettable experience that will leave you longing to return again and again.

The Location



McEwan Fraser Legal

Solicitors & Estate Agents

Tel. 01738 500 655
www.mcewanfraserlegal.co.uk
info@mcewanfraserlegal.co.uk



Text and description
JAYNE SMITH
 Corporate Account Manager



Professional photography
GRANT LAWRENCE
 Photographer



Layout graphics and design
ALAN SUTHERLAND
 Designer

Disclaimer: The copyright for all photographs, floorplans, graphics, written copy and images belongs to McEwan Fraser Legal and use by others or transfer to third parties is forbidden without our express consent in writing. Prospective purchasers are advised to have their interest noted through their solicitor as soon as possible in order that they may be informed in the event of an early closing date being set for the receipt of offers. These particulars do not form part of any offer and all statements and photographs contained herein are for illustrative purposes and are not guaranteed or warranted. Buyers must satisfy themselves for the accuracy and authenticity of the brochure and should always visit the property to satisfy themselves of the property's suitability and obtain in writing via their solicitor what's included with the property including any land. The dimensions provided may include, or exclude, recesses intrusions and fitted furniture. Any measurements provided are for guide purposes only and have been taken by electronic device at the widest point. Any reference to alterations to, or use of, any part of the property does not mean that any necessary planning, building regulations or other consent has been obtained. A buyer must find out by inspection or in other ways that all information is correct. None of the appliances/services stated or shown in this brochure have been tested by ourselves and none are warranted by our seller or MFL.