



Apt 20 Greenwood Grove East, Stewarton Road, Newton Mearns

www.nicolestateagents.co.uk



Nicol Estate Agents



Nicol Estate Agents

Situation

Newton Mearns is located approximately 9 miles from Glasgow City Centre. Commuter routes are served by the M77, M8 and Glasgow Orbital motorways which also provide 30 minute journey times to both Glasgow and Prestwick international airports. There are regular train and bus services to Glasgow, East Kilbride and the beautiful Ayrshire coast. Patternon Train Station is a short walk away.

Recognised as providing amongst the highest standards of local amenities, Newton Mearns offers an array of healthcare centres, banks and libraries and a broad range of supermarkets, boutique shops and restaurants, including The Avenue Shopping Centre. Only a short distance away is the Greenlaw Retail Park which includes Waitrose, Tesco Metro, Aldi and a range of bars and restaurants. Silverburn shopping centre is only a short drive from the property.

Local sports and recreational facilities include David Lloyd's, Parklands Country Club, Williamwood and Whitecraigs Golf Clubs, several private bowling clubs and Whitecraigs tennis and rugby club, as well as East Renfrewshire Council's own excellent sports and leisure facilities at Eastwood Toll. If you are an outdoors lover, Rouken Glen Park, voted Best Park in the UK 2016, is nearby with walking trails through the woods, a great adventure play area, a skate park, five a side football pitches and a boating pond.









Description

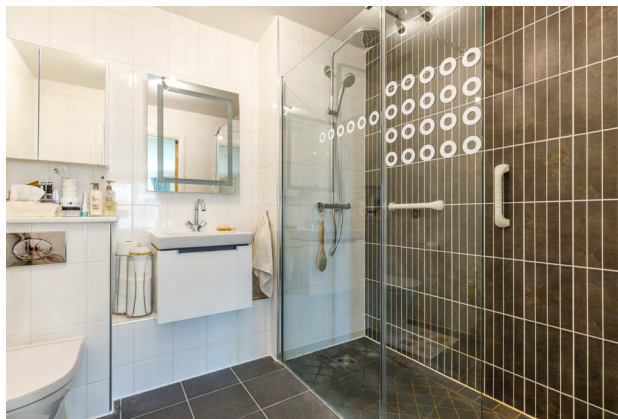
A well presented and well maintained first floor two bedroom retirement flat with private terrace and allocated parking, enjoying aspects over the attractive residents' gardens, set within this popular and most convenient modern McCarthy & Stone development, built in circa 2017, located just only a short walk away from public transport links and local amenities at Greenlaw Village.

Greenwood Grove was built by McCarthy & Stone for retirement living. The development consists of 68 one and two-bedroom retirement apartments for the over 60s with a house manager service.

When entering the apartment block, the entrance foyer offers residents' a range of social areas, including a beautifully presented residents' lounge and roof top sun terrace. There is elevator access to all floors and all apartments are accessed via broad well-kept and illuminated hallways.

The apartment affords a reception hall with two large storage cupboards. Bright combined sitting/dining room with French doors opening to a private terrace overlooking the residents' gardens. Well-appointed kitchen with a range of floor and wall mounted cabinets and integrated appliances. Bedroom one is particularly spacious with fitted wardrobes and an attractive ensuite wet room. Bedroom two, again of double proportions. Attractive bathroom with separate walk in shower enclosure.

The property is further complemented by double glazing, electric underfloor heating, secure entry system, well maintained landscaped communal garden grounds and an allocated parking space. In addition, there is a guest suite for visiting family members and for added peace of mind, the property benefits from the balance of the NHBC Guarantee. The property is maintained by McCarthy & Stone.





Residents Lounge



Residents Foyer



Sun Terrace



View From Sun Terrace



Residents Lounge



Residents Sun Lounge



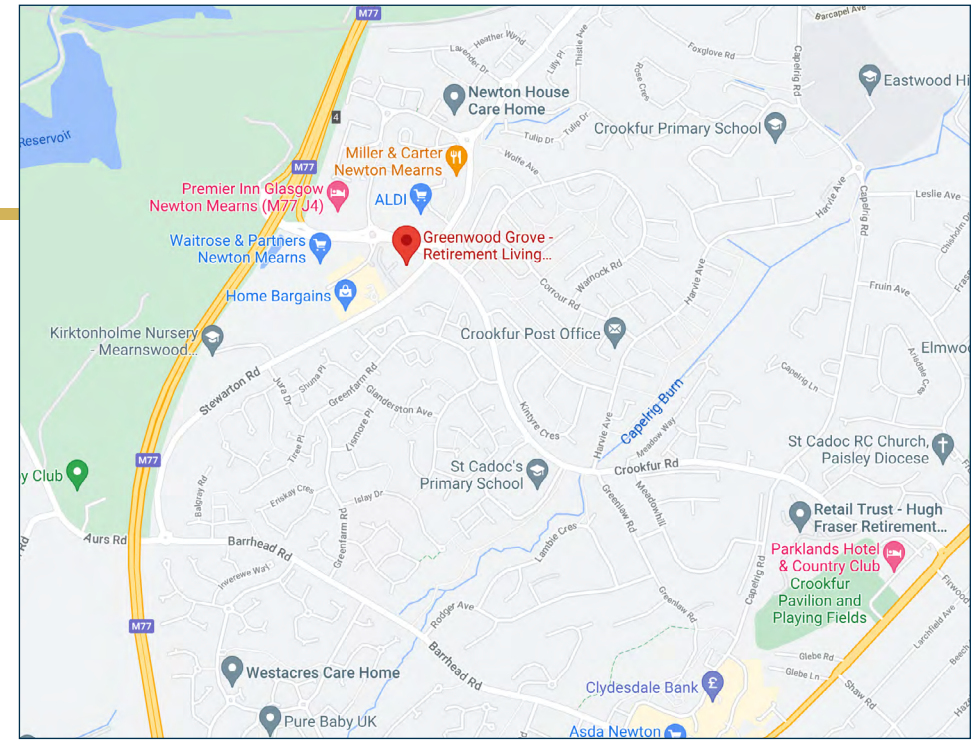
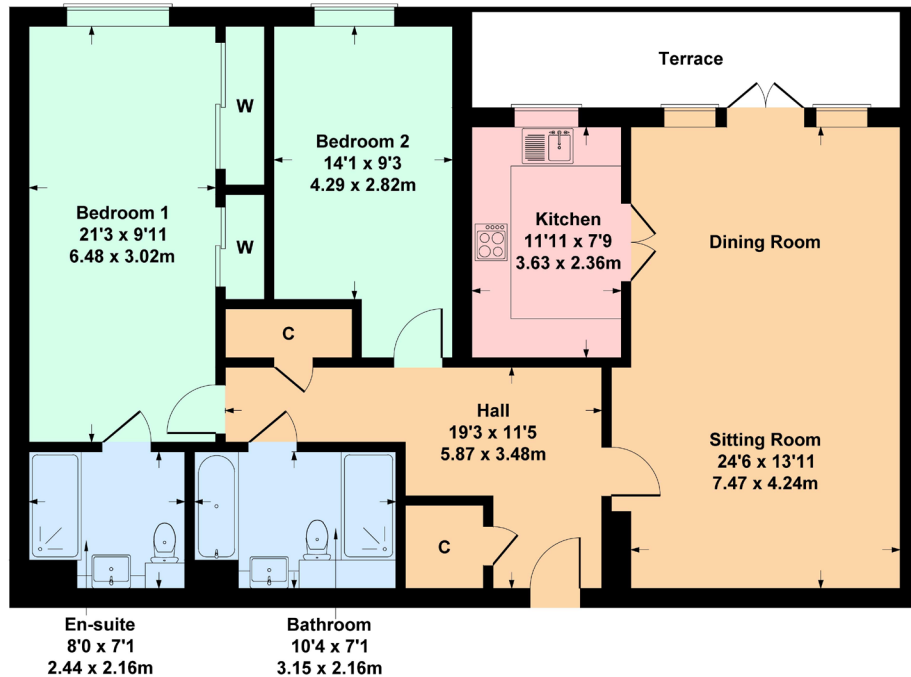


Nicol Estate Agents



Apt 20 Greenwood Grove East, Stewarton Road, Newton Mearns G77 6ZD

Approximate gross internal area 1,171 sq ft - 109 sq m



Viewing

By appointment through
Nicol Estate Agents
46 Ayr Road
Newton Mearns, Glasgow G46 6SA
Telephone 0141 616 3960
mail@nicolestateagents.co.uk

Outgoings

East Renfrewshire Council
Band F

Fixtures and Fittings

Only items specifically mentioned in the sale particulars are included in the sale price.

Energy Efficiency Rating

Band B

Services

The property will be supplied by mains water and electricity. Electric central heating.

Local Authority

East Renfrewshire Council
Council headquarters
Eastwood Park, Rouken Glen Road
Giffnock G46 6UG
Tel: (0141) 577 3000

Property Reference 1944

SKETCH PLAN FOR ILLUSTRATIVE PURPOSES ONLY

All measurements, walls, doors, windows, fitting and appliances, their sizes and locations are approximate only. They cannot be regarded as being a representation by the seller, nor their agent, produced by Potterplans Ltd. 2021

We believe these details to be accurate however it is not guaranteed and they do not form any part of a contract. Fixtures and fittings are not included unless specified in the enclosed. Photographs are for general information and it must not be inferred that any item is included for sale with the property. All distances and measurements are approximate. Floorplans may not be to scale and are for illustration purposes only.

46 Ayr Road, Newton Mearns, Glasgow G46 6SA

T: 0141 616 3960 F: 0141 258 2761 E: mail@nicolestateagents.co.uk

www.nicolestateagents.co.uk

