



2 Shaw Court, Broomhill Gardens, Newton Mearns

www.nicolestateagents.co.uk



Nicol Estate Agents



Nicol Estate Agents

Situation

Newton Mearns is located approximately 9 miles from Glasgow City Centre. Commuter routes are served by the M77, M8 and Glasgow Orbital motorways which also provide 30 minute journey times to both Glasgow and Prestwick international airports. There are regular train and bus services to Glasgow, East Kilbride and the beautiful Ayrshire coast.

Newton Mearns is acknowledged for the high standard of local amenities and provides a selection of local shops, supermarkets, restaurants, regular bus and rail services to Glasgow City Centre, banks, library and health care facilities. Shaw Court is conveniently located for access to The Avenue shopping centre, Waitrose at Greenlaw Village Retail Park and is with walking distance to the local shops, restaurants and healthcare facilities on Mearns Road and Broom Park.

Local sports and recreational facilities include David Lloyd Rouken Glen, Parklands Country Club, Cathcart, Williamwood and Whitecraigs Golf Clubs and Whitecraigs Tennis Club, as well as East Renfrewshire Council's own excellent sports and leisure facilities at Eastwood Toll.





Description

A beautifully presented and upgraded one bedroom ground floor cottage flat, set within a much admired and most convenient retirement development, just a short distance from public transport, local shops, post office and health surgeries.

The accommodation comprises:

Welcoming reception hallway with ample storage. Bright sitting room/ dining room. Separate, refitted kitchen with a range of wall mounted and floor standing units. Bedroom, which is of double proportion with fitted wardrobes. A refitted shower room completes the accommodation.

Shaw Court benefits from a house manager service.

The property is further complemented by double glazing and electric heating. The property also benefits from well maintained landscaped communal garden grounds and private resident's parking facilities.

The property is maintained by James Gibb

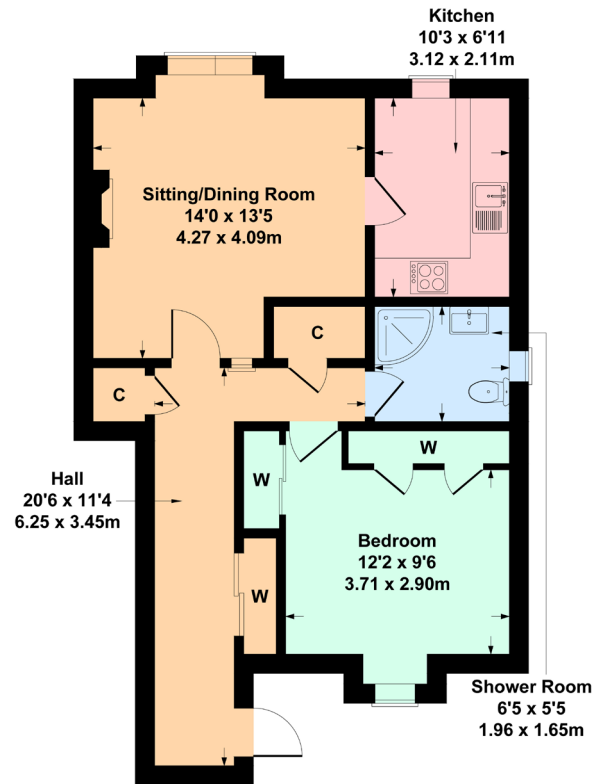


Nicol Estate Agents



2 Shaw Court, Broomhill Gardens, Newton Mearns G77 5GH

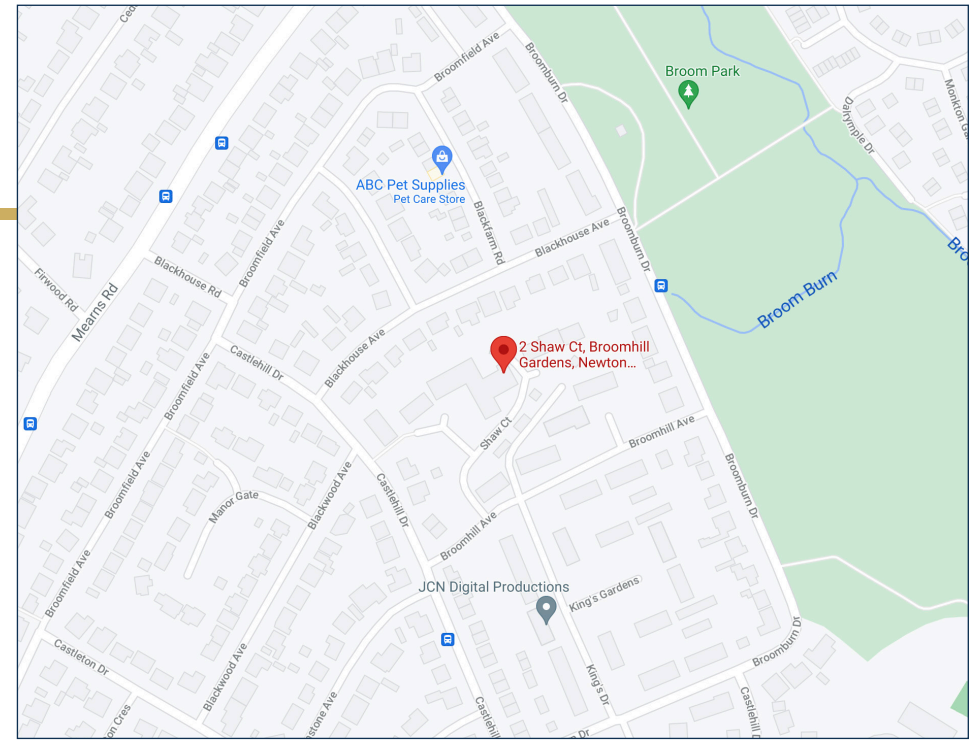
Approximate gross internal area 611 sq ft - 57 sq m



SKETCH PLAN FOR ILLUSTRATIVE PURPOSES ONLY

All measurements, walls, doors, windows, fitting and appliances, their sizes and locations are approximate only. They cannot be regarded as being a representation by the seller, nor their agent. produced by Potterplans Ltd. 2021

We believe these details to be accurate however it is not guaranteed and they do not form any part of a contract. Fixtures and fittings are not included unless specified in the enclosed. Photographs are for general information and it must not be inferred that any item is included for sale with the property. All distances and measurements are approximate. Floorplans may not be to scale and are for illustration purposes only.



Viewing

By appointment through
Nicol Estate Agents
46 Ayr Road
Newton Mearns, Glasgow G46 6SA
Telephone 0141 616 3960
mail@nicolestateagents.co.uk

Outgoings

East Renfrewshire Council
Band D

Fixtures and Fittings

Only items specifically mentioned in the sale particulars are included in the sale price.

Energy Efficiency Rating

Band E

Services

The property will be supplied by mains water and electricity. Electric central heating.

Local Authority

East Renfrewshire Council
Council headquarters
Eastwood Park, Rouken Glen Road
Giffnock G46 6UG
Tel: (0141) 577 3000

Property Reference 1958

46 Ayr Road, Newton Mearns, Glasgow G46 6SA
T: 0141 616 3960 F: 0141 258 2761 E: mail@nicolestateagents.co.uk

www.nicolestateagents.co.uk

